

VOLUME 09

Bisley
WORKWEAR

WORKSTYLE



VOLUME 09 Bisley WORKWEAR WORKSTYLE

02	HISTORY OF BISLEY	
04	INNOVATION	
20	ICONS	
22	STANDARDS	
24	WORKWEAR	
44	SAFETYWEAR LIGHTWEIGHT	
54	SAFETYWEAR REGULAR WEIGHT	
64	X AIRFLOW	
70	FLEX & MOVE	
74	INDUSTRIAL	
80	PROTECTIVE WEAR	
94	WINTER	
104	PINK	
108	NIGHT SAFETY	
112	WOMENS	
122	INDEX	
134	SIZING	
136	CUSTOMER SUPPORT	

No part of this catalogue can be reproduced without the prior permission of Bisley Workwear. Although we take care during photographic reproduction of our products, colours shown may vary slightly from the actual finished product.

© Bisley Workwear 2015

Australia is a gritty nation proud of its hardworking men and women. Work ethics and resolve are as much a part of our heritage as football, cricket and Sunday lunch. We pride ourselves on an ability to roll up our sleeves and get on with it, whether that's in the mines, on top of a skyscraper or in the factory.

Australian-owned and operated, Bisley Workwear has played a big part in this history of taming our hard land, closely bonded with all that is trustworthy, solid and down-to-earth. The company has been shaping the Australian workwear clothing industry since the 1950s, with old-fashioned ideals like quality, exceptional service and value for money.

But there is nothing old-fashioned about the technical innovations in Bisley's latest Workwear ranges, like **X Airflow** and **Flex & Move**. Bisley's workwear for men and women has always been top of its game in the field of safety as well as in classic craftsmanship and comfort. Today, Bisley's range of no-nonsense gear includes garments with inbuilt sun protection, insect barriers, static control, moisture control, and flame and water resistance – just for starters.

Bisley's diverse collection of **Workwear**, **Safetywear** and **Protective wear** is big on safety and tough-wearing materials. It's big on comfort and style. In fact, it's big on just about everything. Welcome to Bisley's latest catalogue, and I hope you'll put it through its paces!



A big company with a history built on small company values.

Bisley is the market leader in specialist branded apparel and has long been regarded as one of Australasia's most trustworthy, solid and honest brands.

The company began trading around 1950, when founders Emery Rusti and Alex Menczel commenced dabbling in the garment business. They hired a General Manager – former pig farmer John Woods – who employed men's shirts agent Keith Stewart to take these garments to market.

Some sixty years later, the Bisley brand offers a comprehensive range of Workwear, Safetywear and Protective wear for both men and women.

And to this day, Bisley is Australia's fastest growing workwear brand because of the good old-fashioned values the company still stands by: "We value integrity, so we do what we say we're going to do, on time and on budget."

Bisley partners with brands that share these values and business integrity.

Bisley also partners with the biggest and best independent testing laboratories to develop their garments. Using the latest in innovative technologies allows Bisley to maintain the highest quality and compliance of their Workwear, Safetywear and Protective wear for men and women.

It's the exceptional quality, competitive pricing and reliable accessibility of Bisley that sets this hardworking brand apart from the competition.

We put our customers first every time, servicing even the biggest orders with industry-best daily replenishment order fulfilments, consistent quality performance and service that exceed their expectations.

IT'S THE EXCEPTIONAL QUALITY, COMPETITIVE PRICING
AND RELIABLE ACCESSIBILITY OF BISLEY THAT SETS THIS
HARDWORKING BRAND APART FROM THE COMPETITION.

Bisley WORKWEAR

INNOVATION 04

At Bisley we've been working hard to deliver hard working clothing since 1958. Our iconic brand continues to engineer new and innovative workwear that handles the toughest jobs of the 21st century. Each garment is tested to meet the highest standards of quality control and we continue to surpass expectation. Inspired by the Australian worker, our workwear provides the ultimate in style and safety. Without compromising form for functionality, Bisley makes quality workwear for the big jobs.



A high performance alternative to standard workwear, the Flex & Move range is as much about style as it is about functionality.



Reinforced contrast shoulder patches and 3M piping.

Contrast arm pen pocket.

Reinforced contrast pocket patches.

Contoured two piece sleeve.

Mechanical stretch cotton fabric.

**FLEX & MOVE MECHANICAL
STRETCH SHIRT BS6133**

FLEX & MOVE

Made to move with you, with distinctive stretch fabrics, Flex & Move offers two tone, reinforced design for wear and tear. So you feel like yourself – relaxed – even in the toughest situations. The Flex & Move range includes shirts, pants and shorts.

Internal waist band with yellow trim.

Curved waistband with 7 belt loops.

D ring front RHS.

Front slant pockets.

Stretch back thigh panel.

Contrast stitching.

Engineered, double layered knee.

Polyester Oxford with antistatic yarn.

Cotton canvas.

Boot hem cut out cuff.

Contoured back shaped panel.

Reinforced contrast hem cuff.

Bisley WORKWEAR **FLX & MOVE**

FLEX & MOVE STRETCH PANT BPC6130



X AIRFLOW

Keep your cool on the job with Bisley's X Airflow™ Technology. Made with lightweight but durable ripstop fabric, this breathable workwear is engineered to perform as things heat up. The Bisley X Airflow™ shirt features five vents across the upper and lower back, shoulders, underarm and sides, plus breathable reflective tape, making it the ultimate cool workwear shirt.



**3M TAPED TWO TONE HI VIS
X AIRFLOW™ RIPSTOP SHIRT BS6415T**

Multiple ventilation points across this garment provides unmatched cooling properties through key heat stress points: upper and lower back, underarm and front vents.



Curved waistband with 7 belt loops.



X AIRFLOW™ 3M TAPED RIPSTOP ENGINEERED CARGO WORK PANT BPC6475T

FLAME RESISTANT

HRC3 Protection

At Bisley we take our responsibility to protect your workers seriously. This is why we use reputable international branded fabrics, such as Tencate Tecasafe® Plus and Westex Ultrasoft®, in our flame resistant product range. Tried and tested over time to give you the peace of mind that you and your workers are covered by the decades of experience, vigorous testing and strict quality control processes and standards that both Bisley and our technical fabric partners enforce across their businesses.

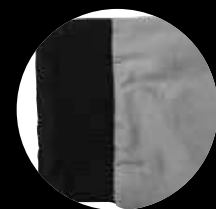
Protect your greatest asset. Your workers.



Detachable contoured shaped zip off hood.



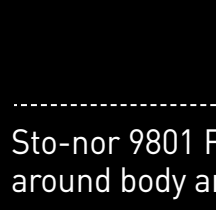
Two way radio loop or gas monitor loop on both sides.



Action back for extra movement and comfort.



Twin chest patch pockets with extended front yoke flap.



Adjustable sleeve cuff with internal inner sleeve cuff rib.



Waist seam welt pockets with flap and touch tape closure.



**TAPED TWO TONE HI VIS FR
JACKET BJ8100T**

Sto-nor 9801 FR reflective taped hoop pattern around body and sleeve.



TENCATE TECASAFE® PLUS TAPED TWO TONE
HI VIS FR VENTED SHIRT BS8082T



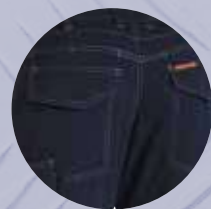
Back venting.



Underarm venting.



Full gusset sleeve
cuff & plastic press
stud sleeve closure.



Double back hip
welt pockets.

Mobile phone pocket.



Diamond shaped crotch gusset.



TENCATE TECASAFE® PLUS TAPED ENGINEERED
FR VENTED CARGO PANT BPC8092T

TENCATE
Tecasafe® Plus

Bisley's flame resistant workwear meets the rigorous demands of high risk 21st century industry. This successful range provides premium protection from hazards such as arc flash and flash fire. We design hard-wearing garments, balancing maximum safety with a perfect fit. Whether you work in oil, gas, electrical, mining or infrastructure, your hottest jobs are what these garments protect against best.

TENCATE TECASAFE® PLUS TAPED TWO TONE
HI VIS FR VENTED SHIRT BS8082T

TENCATE TECASAFE® PLUS FR TAPED
ENGINEERED VENTED CARGO PANT
BPC8092T

FR ventilation to combat heat stress

TENCATE
Tecasafe® Plus
**FLAME
RESISTANT**

NEW MODERN FIT

Our new modern fit workwear pants have been engineered with a lower front and back rise fit, to offer you style, comfort and functionality, so you can do your best work in all conditions, and let your workwear do the rest.

COTTON DRILL FLAT FRONT WORK PANT BP6006



MODERN FIT 14X7 COTTON DRILL

- Front and back rise height reduced by 4cm for snug fit.
- Reinforced self fabric bind on internal crotch.
- Thigh circumference reduced by one size.
- New improved heavy duty 14x7 drill for added strength.
- Designed for those that prefer to wear their pants on their lower waist.

ORIGINAL COTTON DRILL WORK PANT BP6007



TRADITIONAL FIT 10X10 COTTON DRILL

3M TAPED COTTON DRILL WORK PANT BP6006T
COTTON DRILL CARGO WORK PANT BPC6006
3M TAPED COTTON DRILL CARGO WORK PANT BPC6006T

New modern fit also available in

NIGHT SAFETY



Wear on lower waist/hip.

Mobile phone pocket.

Reinforced self fabric bind on internal crotch.

New improved heavy duty 14x7 drill for added strength.



3M 8910 Reflective biomotion taped double hoop around leg.

3M TAPED NIGHT COTTON DRILL PANT BP6808T

Night range also available in

3M TAPED NIGHT COVERALL BC6806T
3M TAPED NIGHT DRILL SHIRT BS6807T



WOMEN IN THE WORKFORCE

Each of our key ranges feature designs especially tailored for women. Bisley's stylish women's wear is created for and inspired by the modern worker, featuring quality materials and modern design details. Look and feel feminine without compromising comfort and performance, with Bisley's Protective wear, X Airflow, Safetywear and everyday Workwear for women.



**WOMENS 3M TAPED TWO TONE HI VIS COOL
LIGHTWEIGHT SHIRT BL6896**



WOMENS X AIRFLOW™ RIPSTOP SHIRT BL6414



**WOMENS 3M TAPED HI VIS
INDUSTRIAL COOL VENT SHIRT BL6445T**



**WOMENS TENCATE TECASAFE® PLUS TAPED TWO TONE
HI VIS FR LIGHTWEIGHT VENTED SHIRT BL8098T**



**X AIRFLOW™ WOMENS RIPSTOP VENTED
WORK PANT BPL6474**



**WOMENS INDUSTRIAL ENGINEERED
DRILL PANT BPL6021
WOMENS 3M TAPED INDUSTRIAL
ENGINEERED DRILL PANT BPL6021T**



**WOMENS COOL VENTED
LIGHTWEIGHT PANT WITH
CONTRAST STITCHING BPL6431
WOMENS 3M TAPED COOL VENTED
LIGHTWEIGHT PANT WITH
CONTRAST STITCHING BPL6431T**

SUPPORTING YOUR COMMUNITY



Bisley have aligned with the National Breast Cancer Foundation (NBCF), as a Platinum Partner for the Real Men Wear Pink campaign. We know the kind of situations our customers face each day in our workwear, so we know how gigantic their hearts are, and we're asking them to wear those hearts on their sleeves. With \$3 from the sale of each Pink Shirt going toward the NBCF, don't you think it's time to man up and wear Pink?



NBCF embroidery on sleeve applies to all shirts in pink range.

Be part of the challenge, register today
realmenwearpink.org.au

**3M TAPED TWO TONE HI VIS COOL
LIGHTWEIGHT SHIRT BS6896**
**3M TAPED COOL HI VIS
LIGHTWEIGHT SHIRT BS6696T**



Bisley WORKWEAR

YOUR GUIDE TO ICONS

ICONS 20

Our range of Workwear is developed with features to protect you from rain, insects, open flames and more...



INDUSTRIAL

Reinforced stitching, bartacks, rivets and heavy duty fabrics mean Bisley Workwear products with this symbol have been developed for industrial environments or work places.



STATIC CONTROL

Certain natural fibres do not attract static electricity (static neutral) and therefore reduce the risk of an electric shock to the body. 100% Cotton is the most common static control in garments. AS/NZS 1020:1995



COOL LIGHTWEIGHT

We recognise the need for developing lightweight, breathable garments and have added mesh ventilation to key perspiration points on some garments.



SUN PROTECTION

The ultraviolet radiation transmitted through a fabric to the skin is measured and given a rating of 15 (good protection), 30 (very good protection), 40 to 50+ (excellent protection). AS/NZS 4399:1996



EASY-FIT

Whether you're an 'in-between' size or you prefer a comfortable stretch for freedom of movement, garments developed with an easy-fit can provide an ergonomic adjustment with no change to look or feel.



MOISTURE CONTROL

Hydrophilic garments pull perspiration away from your skin to the outer layer of the fabric where it is able to evaporate faster, leaving your skin fresh and without excessive perspiration.



STAIN REGUARD

DuPont, the world leader in fibre and fibre treatment technology use their ingenious stain release technology to provide garments with an easy cleaning solution.



INSECT PROTECTION

Bisley Insect Protection permethrin treated garments offer a unique 100 wash guarantee, applied during the fabric process which won't harm you, only the mosquitoes trying to bite.



INDUSTRIAL WASH

Bisley premium Industrial range is designed to withstand industrial washes at 75°C. Using superior imported German dyes for greater colourfastness and superior industrial strength 3M 9920 reflective tape.

CORDURA®

Some Bisley Workwear garments have Cordura® incorporated into them to enhance tear and abrasion resistance, due to the high quality, resilient Nylon yarns used to create it.

3M Scotchlite™ Reflective Material

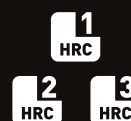
3M REFLECTIVE TAPE

Bisley Safetywear utilise 3M reflective tape with patented retroreflection technology in 99% of the Hi Vis range. 8910 tape is for general domestic wash, 9920 is for industrial wash and 8935 is for flame resistant garments. AS/NZS 1906.4:2010



ANTI-BACTERIAL

Sanitized Silver effectively damages the cell membranes of bacteria and inhibits their growth. In addition, it hinders the reproduction of the bacteria responsible for odour development.



HRC

The Hazard Risk Category (HRC) outlines the ATPV requirement and the clothing types required to offer specific flame resistant protection. NFPA 70E



ATPV RATING

The minimum incident energy (in Calories per cubic centimetre) that protective equipment can be exposed to, to prevent the onset of a second-degree burn. NFPA 70E



FLAME RESISTANT

Garments made with fabrics that self-extinguish when the source of ignition is removed. The most commonly used test method is ASTM D6413.



WATER RESISTANT

Water resistant membranes are often added to the reverse side of rainwear fabrics to ensure that no water can penetrate from outside, keeping you dry in wet weather. AS 2001.2.18-1987



HIGH VISIBILITY MATERIAL

Bisley Safetywear High Visibility garments are developed to be seen in high-risk environments and protect you from work place hazards. AS/NZS 1906.4:2010



HI-VIS DAY ONLY

Day (D) Only garments are developed to be worn during the day time only and never at night. Hi-Vis colours are used to ensure you're seen in high-risk environments. AS/NZS 4602.1:2011



HI-VIS DAY OR NIGHT

Day/ Night (D/N) garments are developed to be worn both during the day and also at night. Hi-Vis colours accompanied with retroreflective taping offer maximum protection. AS/NZS 4602.1:2011



HI-VIS NIGHT ONLY

Night (N) Only garments are developed to be worn during the night time only as the retroreflective taping offers visibility from vehicle headlights. AS/NZS 4602.1:2011



AS/NZS 1957:1998

Bisley Workwear garments meet the requirements of AS/NZS 1957:1998 that outlines the care instructions needed to ensure proper care of the garment.



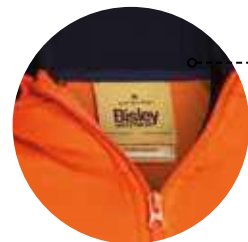
AS/NZS 4602.1:2011

This standard covers the needs of workers in situations where vehicles may be approaching them at speed, in time for any necessary safety action to be taken, or any other industrial situation of similar risk levels where workers need to be seen at a distance, against a complex visual background.



AS/NZS 1906.4:2010

Bisley Safetywear garments use high visibility materials made from durable woven or knitted fabrics and are tested for high daytime visibility. Our high quality fabrics and tapes are tried and tested to this standard to ensure you're protected in high risk situations.



AS/NZS 2392:1999

Bisley Workwear garments meet the requirements of AS/NZS 2392:1999, which outlines the method for permanent labelling with the brand name, size, care instructions, fibre content and country of origin.



AS/NZS 4399:1996

All garments that comply with this standard deliver ultraviolet protection, commonly known as UPF. Where the most effective sun protection is required, we recommend a garment that covers the full arm and leg area and has a sun protection rating of UPF 50+.



Bisley WORKWEAR

AUSTRALIAN & INTERNATIONAL 23 STANDARDS

As well as making you comfortable, Bisley Workwear garments are developed and tested to meet stringent industry standards and deliver work health and safety (WHS) solutions.

AS/NZS 2622:1996

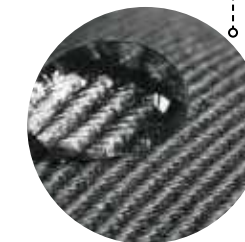
Bisley Workwear garments meet the requirements of AS/NZS 2622:1996, which outlines the method for labelling of fibre content in textile products.



3M Taped Two Tone Hi Vis Industrial Cool Vent Shirt
BS6448T

AS 2001.2.18-1987

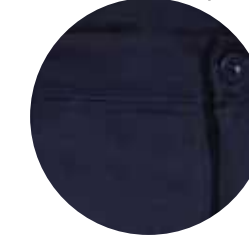
Bisley Workwear 'waterproof' garments are deemed compliant when no water has passed through it over an 18-hour period. These garments have a water-repellent or water-resistant coating that stops moisture from reaching the wearer in wet weather conditions.



3M Taped Industrial Engineered Cargo Pant
BPC6021T

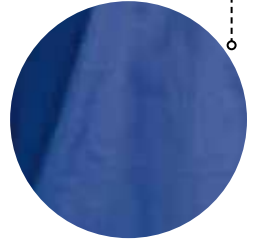
AS/NZS 1020:1995

Bisley Workwear offers a large range of natural cotton fibre products, which naturally avoid the generation of static electricity by remaining neutral, therefore increasing the wearer's comfort.



ISO 14184-1.1998

Fabrics used in Bisley Workwear garments are tested regularly to ensure that naturally created formaldehyde levels are kept to the safe minimum standard set out by the ACCC (Australian Competition & Consumer Commission). Bisley Workwear garments are free from formaldehyde.



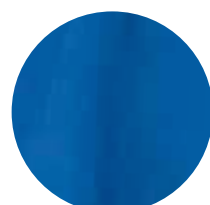


Scott Cam's signature
Bisley workshirt BSC6433.



Centre back box pleat
for increased freedom
of movement across
shoulders.

Durable,
twin-needle
top stitching
at side seams
stabilise the
shirt seams
from breaking
and tearing.



Provides protection against ultraviolet rays 50+.



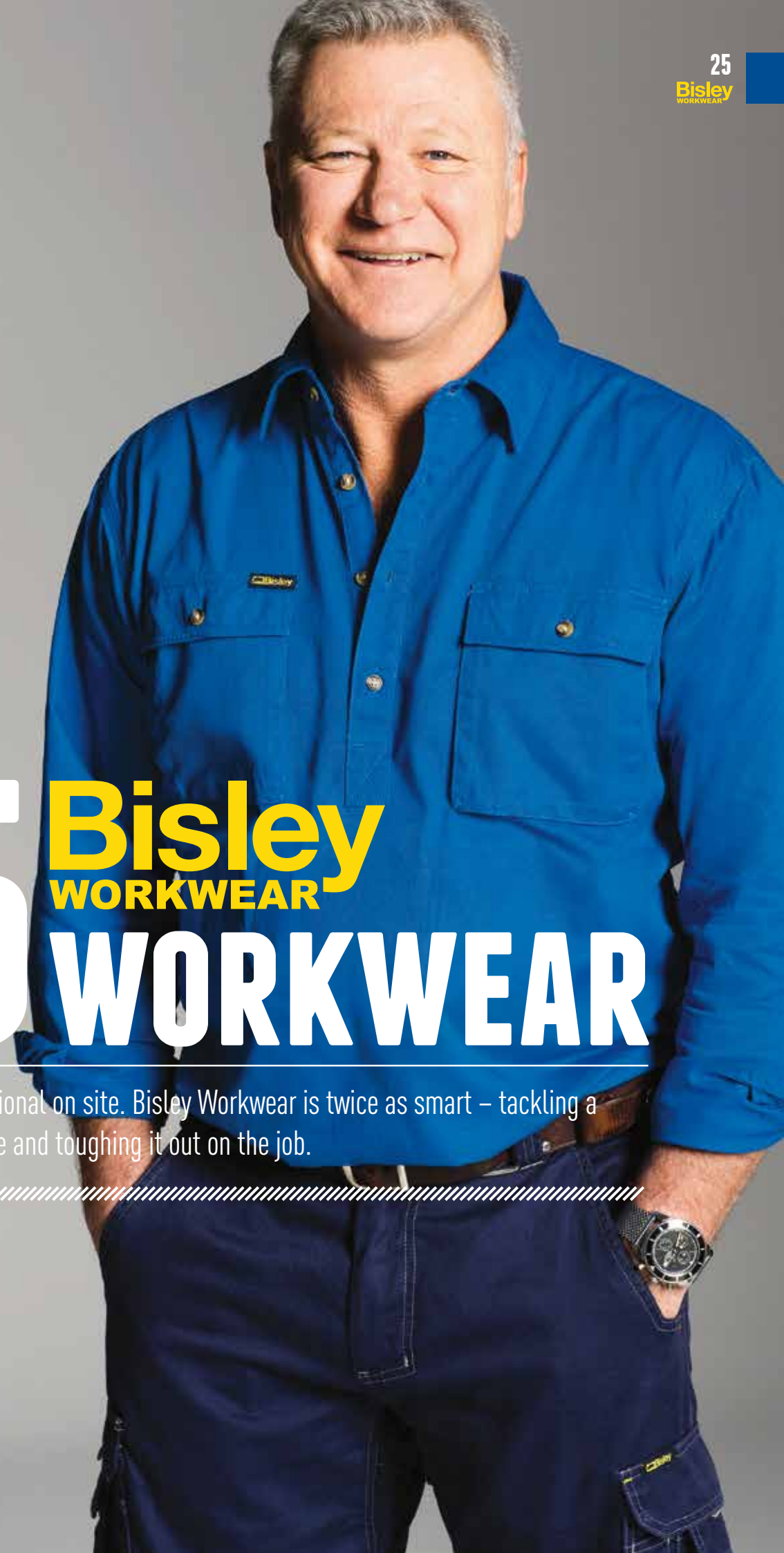
Closed Front
Cotton Drill Shirt
BSC6433

Refer to page 28 for more features and colours.

25 Bisley WORKWEAR

Look and feel professional on site. Bisley Workwear is twice as smart – tackling a client meeting in style and toughing it out on the job.

Closed Front
Cotton Drill Shirt
BSC6433





FLEX & MOVE MECHANICAL STRETCH SHIRT
BS1133

- / Mechanical stretch fabric for extra comfort and movement
- / Contrast polyester patches to prevent wear and tear at highly abrasive areas
- / 3M 8710 Reflective cord piping along front and back shoulder yoke
- / Mitred chest pockets with touch tape closure
- / Left pocket with pen division and hidden phone pouch
- / Two piece structured collar
- / Antistatic carbon yarn in polyester patches for added static control

COLOURS (CODE)

Black (BBLK)
Khaki (BCDR)
Charcoal (BCCG)

SIZES

XS–6XL
Active Fit

FABRIC

100% Cotton (Mechanical Stretch) 145gsm
98% Polyester, 2% Carbon Oxford 180gsm



FLEX & MOVE MECHANICAL STRETCH SHIRT
BS6133

- / Mechanical stretch fabric for extra comfort and movement
- / Contrast polyester patches to prevent wear and tear at highly abrasive areas
- / 3M 8710 Reflective cord piping along front and back shoulder yoke
- / Mitred chest pockets with touch tape closure
- / Left pocket with pen division and hidden phone pouch
- / Two piece structured collar
- / Contoured shape two piece sleeve
- / Antistatic carbon yarn in polyester patches for added static control
- / Two button adjustable sleeve cuff

COLOURS (CODE)

Black (BBLK)
Khaki (BCDR)
Charcoal (BCCG)

SIZES

XS–6XL
Active Fit

FABRIC

100% Cotton (Mechanical Stretch) 145gsm
98% Polyester, 2% Carbon Oxford 180gsm



X AIRFLOW™ RIPSTOP SHIRT
BS6414

- / Twin chest patch pockets with touch tape closure
- / Contoured shape two piece sleeve
- / Twin sleeve patch pocket and flap with pen division
- / Hidden roll up sleeve tab in sleeve pocket
- / Two piece structured collar
- / Two button adjustable sleeve cuff

COLOURS (CODE)

Navy (BPCT)
Charcoal (BCCG)

SIZES

S–6XL
Modern fit

FABRIC

100% Cotton Ripstop 150gsm
100% Cotton Open Mesh 125gsm



WOMENS X AIRFLOW™ RIPSTOP SHIRT
BL6414

- / Twin chest patch pockets with touch tape closure
- / Contoured shape two piece sleeve
- / Twin sleeve patch pocket and flap with pen division
- / Hidden roll up sleeve tab in sleeve pocket
- / Two piece structured collar
- / Two button adjustable sleeve cuff

COLOURS (CODE)

Navy (BPCT)
Charcoal (BCCG)

SIZES

8–24

FABRIC

100% Cotton Ripstop 150gsm
100% Cotton Open Mesh 125gsm



ORIGINAL COTTON DRILL SHIRT
BS1433

- / Two pleated pockets with button down flaps
- / Left chest pocket with pen division
- / Centre back box pleat
- / Two piece structured collar
- / Contrast natural coloured buttons



COLOURS (CODE)

Black (BBLK)
Khaki (BCDR)
Bottle (BGRG)
Navy (BPCT)

SIZES

S–6XL

FABRIC

100% Cotton Preshrunk Drill 190gsm



ORIGINAL COTTON DRILL SHIRT
BS6433

- / Two pleated pockets with button down flaps
- / Left chest pocket with pen division
- / Centre back box pleat
- / Two piece structured collar
- / Contrast natural coloured buttons
- / Two button adjustable sleeve cuff



COLOURS (CODE)

Black (BBLK)
Khaki (BCDR)
Bottle (BGRG)
Navy (BPCT)

SIZES

S–6XL

FABRIC

100% Cotton Preshrunk Drill 190gsm



COOL LIGHTWEIGHT DRILL SHIRT
BS1893

- / Two ventilated mesh back panels for airflow
- / Underarm mesh ventilation for breathability
- / Two button down chest pockets
- / Left chest pocket with pen division
- / Two piece structured collar



COLOURS (CODE)

Khaki (BCDR)
Navy (BPCT)

SIZES

S–6XL

FABRIC

100% Cotton Preshrunk Drill 155gsm
100% Cotton Open Mesh 200gsm



COOL LIGHTWEIGHT DRILL SHIRT
BS6893

- / Two ventilated mesh back panels for airflow
- / Underarm mesh ventilation for breathability
- / Two button down chest pockets
- / Left chest pocket with pen division
- / Two piece structured collar
- / Full gusset sleeve cuff



COLOURS (CODE)

Khaki (BCDR)
Navy (BPCT)

SIZES

S–6XL

FABRIC

100% Cotton Preshrunk Drill 155gsm
100% Cotton Open Mesh 200gsm



**CLOSED FRONT COTTON
DRILL SHIRT
BSC1433**

- / Half placket
- / Two cargo chest pockets with button down flaps
- / Left chest pocket with pen division
- / Centre back box pleat
- / Two piece structured collar
- / Contrast natural coloured buttons



COLOURS (CODE)

Khaki (BCDR)
Bottle (BGRG)
Navy (BPCT)

SIZES

S-6XL

FABRIC

100% Cotton Preshrunk Drill 190gsm



**CLOSED FRONT COTTON DRILL SHIRT
BSC6433**

- / Half placket
- / Two cargo chest pockets with button down flaps
- / Left chest pocket with pen division
- / Centre back box pleat
- / Two piece structured collar
- / Contrast natural coloured buttons
- / Two button adjustable sleeve cuff



COLOURS (CODE)

Khaki (BCDR)
Bottle (BGRG)
Navy (BPCT)
Royal (BVCB)

SIZES

S-6XL (Khaki, Navy, Bottle)
XS-6XL (Royal)

FABRIC

100% Cotton Preshrunk Drill 190gsm



**CHAMBRAY SHIRT
B71407**

- / Double chest mitred patch pockets with buttoned opening
- / Left chest pocket with pen division
- / Centre back box pleat with locker loop
- / Classic chambray weave fabric
- / Two piece structured buttoned down collar
- / Contrast coloured buttons and stitching



COLOURS (CODE)

Blue (BWED)

SIZES

XS-6XL

FABRIC

100% Cotton Chambray 150gsm



**WOMENS CHAMBRAY SHIRT
B71407L**

- / Panelled front with bust and waist shaping
- / Double chest mitred patch pockets with buttoned opening
- / Left chest pocket with pen division
- / Two piece structured buttoned down collar
- / Contrast coloured buttons and stitching
- / Classic chambray weave fabric



COLOURS (CODE)

Blue (BWED)

SIZES

8-24

FABRIC

100% Cotton Chambray 150gsm



**MENS POLY/COTTON
POLO SHIRT
BK1290**

- / Rib knit collar
- / Left chest pocket with pen division
- / Three button front placket



COLOURS (CODE)

Black (BBLK)
Navy (BPCT)

SIZES

XS-3XL

FABRIC

65% Polyester/ 35% Cotton Pique Knit
180gsm



**WOMENS DRILL SHIRT
BL6339**

- / Re-engineered sleeve fit
- / Panelled front with bust and waist shaping
- / Two chest pockets with button down flaps
- / Two piece structured collar
- / Left pocket with pen division
- / Two button adjustable sleeve cuff



COLOURS (CODE)

Khaki (BCDR)
Navy (BPCT)

SIZES

8-24

FABRIC

100% Cotton Preshrunk Drill 190gsm



**CHAMBRAY SHIRT
B76407**

- / Double chest mitred patch pockets with buttoned opening
- / Left chest pocket with pen division
- / Centre back box pleat with locker loop
- / Two button adjustable sleeve cuff
- / Classic chambray weave fabric
- / Two piece structured buttoned down collar
- / Contrast coloured buttons and stitching



COLOURS (CODE)

Blue (BWED)

SIZES

XS-6XL

FABRIC

100% Cotton Chambray 150gsm



**WOMENS CHAMBRAY SHIRT
B76407L**

- / Panelled front with bust and waist shaping
- / Double chest mitred patch pockets with buttoned opening
- / Left chest pocket with pen division
- / Two piece structured buttoned down collar
- / Two button adjustable sleeve cuff
- / Contrast coloured buttons and stitching
- / Classic chambray weave fabric



COLOURS (CODE)

Blue (BWED)

SIZES

8-24

FABRIC

100% Cotton Chambray 150gsm



**EPAULETTE SHIRT
B71526**

- / Button down shoulder epaulettes
- / Two pleated pockets with button down flaps
- / Left chest pocket with pen division
- / Centre back box pleat with locker loop
- / Two piece structured collar
- / Lightweight fabric

Sky White

COLOURS (CODE)
Sky (BPLB)
White (BWHT)

SIZES
XS–4XL

FABRIC
65% Polyester, 35% Cotton Solid Dyed
Poplin 110gsm



**EPAULETTE SHIRT
B76526**

- / Button down shoulder epaulettes
- / Two pleated pockets with button down flaps
- / Left chest pocket with pen division
- / Centre back box pleat with locker loop
- / Two piece structured collar
- / Lightweight fabric
- / Two button adjustable sleeve cuff

Sky White

COLOURS (CODE)
Sky (BPLB)
White (BWHT)

SIZES
XS–4XL

FABRIC
65% Polyester, 35% Cotton Solid Dyed
Poplin 110gsm



**OXFORD SHIRT
BS1030**

- / Two button down pleated flap pockets with mitred corners
- / Left chest pocket with pen division
- / Centre back box pleat
- / Sleeve cuff with button tab
- / Two piece structured collar
- / Contrast, marbled finish buttons

COLOURS (CODE)
Blue (BCRU)
Green (BLWR)

SIZES
S–6XL (Blue)
S–3XL (Green)

FABRIC
65% Polyester, 35% Cotton Oxford 135gsm



**OXFORD SHIRT
BS6030**

- / Two button down pleated flap pockets with mitred corners
- / Left chest pocket with pen division
- / Centre back box pleat
- / Two button adjustable sleeve cuff
- / Two piece structured collar
- / Contrast, marbled finish buttons

COLOURS (CODE)
Blue (BCRU)
Green (BLWR)

SIZES
S–6XL

FABRIC
65% Polyester, 35% Cotton Oxford 135gsm



**PERMANENT PRESS SHIRT
BS1526**

- / Two piece structured collar
- / Two button down flap pockets
- / Left chest pocket with pen division
- / Centre back box pleat with locker loop
- / Lightweight fabric

COLOURS (CODE)
Midnight (BDKN)
Sand (BPEY)
Sky (BPLB)
White (BWHT)

SIZES
XS–6XL

FABRIC
65% Polyester, 35% Cotton Solid Dyed
Poplin 110gsm

Sky, Sand White Midnight



**PERMANENT PRESS SHIRT
BS6526**

- / Two piece structured collar
- / Two button down flap pockets
- / Left chest pocket with pen division
- / Centre back box pleat with locker loop
- / Lightweight fabric
- / Two button adjustable sleeve cuff

Sky, Sand White Midnight

COLOURS (CODE)
Midnight (BDKN)
Sand (BPEY)
Sky (BPLB)
White (BWHT)

SIZES
XS–6XL

FABRIC
65% Polyester, 35% Cotton Solid Dyed
Poplin 110gsm



**MINI TWILL SHIRT
BS1255**

- / Two inverted pleated pockets with button down flaps
- / Left chest pocket with pen division
- / Centre back box pleat with stitching detail
- / Two piece structured collar with button down points
- / Contrast coloured buttons

COLOURS (CODE)
Stone (BCEM)

SIZES
S–3XL

FABRIC
100% Cotton Preshrunk Drill 155gsm



**MINI TWILL SHIRT
BS6255**

- / Two inverted pleated pockets with button down flaps
- / Left chest pocket with pen division
- / Centre back box pleat with stitching detail
- / Two piece structured collar with button down points
- / Two button adjustable sleeve cuff
- / Contrast coloured buttons

COLOURS (CODE)
Stone (BCEM)

SIZES
S–6XL

FABRIC
100% Cotton Preshrunk Drill 155gsm



**ADVENTURE SHIRT
BS6145**

- / Large, internal, vented upper back area
- / Two pleated chest pockets with touch tape flaps
- / Pen holder on both pockets
- / Sunglasses hook near centre left pocket
- / Roll-up sleeve tabs with buttons
- / Two piece structured collar
- / Two button adjustable sleeve cuff

COLOURS
Black (BBLK)
Sand (BSAN)

SIZES
S–3XL

FABRIC
100% Cotton Preshrunk Drill 155gsm
100% Polyester Mesh Ventilation





**METRO SHIRT
BS1031**

- / Two button down pleated flap pockets with mitred corners
- / Left chest pocket with pen division
- / Double back pleats for increased shoulder movement
- / Two piece structured collar
- / Self coloured marbled finish buttons



COLOURS (CODE)

Blue (BBYD)

SIZES

S-3XL

FABRIC

65% Polyester, 35% Yarn-Dyed Cotton 100gsm



**METRO SHIRT
BS6031**

- / Two button down flap pockets with mitred corners
- / Left chest pocket with pen division
- / Double back pleats for increased shoulder movement
- / Two button adjustable sleeve cuff
- / Two piece, reinforced structured collar
- / Self coloured marbled finish buttons



COLOURS (CODE)

Blue (BBYD)

SIZES

S-3XL

FABRIC

65% Polyester, 35% Yarn-Dyed Cotton 100gsm



**WOMENS CROSS DYED SHIRT
BL1646**

- / Panelled front with bust and waist shaping
- / Back pleats for increased shoulder movement
- / Two piece structured collar



COLOURS (CODE)

Blue (BWED)

SIZES

8-24

FABRIC

65% Polyester, 35% Cotton Cross-Dyed Poplin 110gsm



**WOMENS CROSS DYED SHIRT
BL6646**

- / Panelled front with bust and waist shaping
- / Two button adjustable sleeve cuff
- / Back pleats for increased shoulder movement
- / Two piece structured collar



COLOURS (CODE)

Blue (BWED)

SIZES

8-24

FABRIC

65% Polyester, 35% Cotton Cross-Dyed Poplin 110gsm



**FLEX & MOVE STRETCH PANT
BPC6130**

- / Contrast stretch canvas – front and back upper hip and back inner thigh
- / Curved waistband to prevent gaping at back
- / Front slant pockets
- / RHS leg utility pocket, with ruler, mobile phone, card and pen division
- / LHS welt cargo pocket
- / Twin back pockets with reinforced patches
- / Double layered shaped knee
- / Back shaped knee pane
- / Hem boot cuff
- / Seven reinforced wider and stronger belt loops with hanger loop on front RHS leg

COLOURS (CODE)

Black (BBLK)
Khaki (BCDR)
Charcoal (BCCG)

SIZES

72-112R, 87-132S
Active Fit

FABRIC

100% Cotton Canvas (Duck Weave) 265gsm
97% Cotton 3% Spandex (Stretch Canvas) 200gsm
98% Polyester, 2% Carbon Oxford 180gsm





**X AIRFLOW™ RIPSTOP VENTED WORK PANT
BP6474**

- / Modern lower waist fit
- / Curved waistband to prevent gaping at back
- / Front slant pockets
- / YKK zipper
- / Front LHS multi-purpose pocket and flap
- / Twin back pockets with reinforced patches
- / Back RHS leg ruler pocket with pen and knife division
- / Back yoke and diamond shape crotch ventilation



- / Double layered knee patches with touch tape openings to insert knee pad (pads not included)
- / Seven reinforced wider and stronger belt loops

COLOURS (CODE)

Black (BBLK)
Charcoal (BCCG)
Navy (BPCT)

SIZES

77–112R, 87–132S
Modern fit

FABRIC

100% Cotton Ripstop 234gsm
100% Cotton Open Mesh 125gsm



**X AIRFLOW™ RIPSTOP ENGINEERED CARGO WORK PANT
BPC6475**

- / Modern engineered fit with contoured leg
- / Curved waistband to prevent gaping at back
- / Front slant pockets
- / YKK zipper
- / RHS leg utility pocket, including ruler, mobile phone, card and pen division
- / LHS leg multi cargo pocket, mobile phone pocket and two pen divisions
- / Twin back pockets with reinforced patches
- / Seven reinforced wider and stronger belt loops

- / Double layer contoured knee
- / Hem boot cuff

COLOURS (CODE)

Black (BBLK)
Charcoal (BCCG)
Navy (BPCT)

SIZES

77–112R, 87–132S
Modern fit

FABRIC

100% Cotton Ripstop 234gsm



**WOMENS X AIRFLOW™ RIPSTOP VENTED WORK PANT
BPL6474**

- / Curved waistband to prevent gaping at back
- / Front slant pockets
- / YKK zipper
- / Multi purpose pockets on front legs
- / Twin back pockets with reinforced patches
- / Seven reinforced wider and stronger belt loops
- / Back yoke ventilation
- / Front double layered knee patches



COLOURS (CODE)

Black (BBLK)
Charcoal (BCCG)
Navy (BPCT)

SIZES

6–24

FABRIC

100% Cotton Twill Ripstop 234gsm
100% Cotton Open Mesh 125gsm



**ORIGINAL 8 POCKET CARGO PANT
BPC6007**

- / Adjustable side tab on waistband
- / YKK zipper
- / Two side angled pockets
- / Two side welt pockets
- / Two side cargo pockets with touch tape flaps
- / Two back flat pockets with touch tape flaps



COLOURS (CODE)

Black (BBLK)
Khaki (BCDR)
Bottle (BGRG)
Navy (BPCT)

SIZES

77–112R, 87–132S, 74–94L

FABRIC

100% Cotton Preshrunk Drill 310gsm



**ORIGINAL COTTON DRILL WORK PANT
BP6007**

- / Mobile phone pocket on right side
- / Seven reinforced belt loops
- / Single front pleats
- / Back patch pockets
- / Two side angled pockets
- / Coin pocket in waistband
- / YKK zipper



COLOURS (CODE)

Khaki (BCDR)
Bottle (BGRG)
Navy (BPCT)

SIZES

77–112R, 87–132S, 74–94L

FABRIC

100% Cotton Preshrunk Drill 310gsm



**WOMENS ORIGINAL COTTON DRILL WORK PANT
BPL6007**

- / Mobile phone pocket on right side
- / Key loop on front left side
- / Two angled side pockets
- / YKK zipper
- / Back patch pockets



COLOURS (CODE)

Navy (BPCT)

SIZES

6–24

FABRIC

100% Cotton Preshrunk Drill 310gsm



**COOL VENTED LIGHTWEIGHT CARGO PANT WITH CONTRAST STITCHING
BPC6431**

- / Curved waistband to prevent gaping at back
- / Eleven multifunctional pockets including mirrored cargo pockets
- / Back yoke and diamond shape crotch gusset ventilation
- / All stress points reinforced with heavy duty bartacks
- / Seven reinforced wider and stronger belt loops
- / YKK zipper

COLOURS (CODE)

Navy (BPCT)

SIZES

77–112R, 87–132S

FABRIC

100% Cotton Preshrunk Drill 190gsm
100% Polyester Mesh



Soft feel fabric.



**WOMENS COOL VENTED LIGHTWEIGHT PANT WITH CONTRAST STITCHING
BPL6431**

- / Mitred angled front pockets
- / Back yoke with open mesh vents
- / Welt leg pockets with touch tape closure
- / YKK zipper
- / RHS back patch pocket

COLOURS (CODE)

Navy (BPCT)

SIZES

6–24

FABRIC

100% Cotton Preshrunk Drill 190gsm
100% Polyester Mesh



Soft feel fabric.



**INDUSTRIAL ENGINEERED CARGO PANT
BPC6021**

- / Engineered fit – contoured shaped leg and knee
- / Curved waistband to prevent gaping at back
- / Ten multifunctional pockets including hidden tool pockets
- / Mitred patch pockets
- / Double layer knee for protection against wear and tear
- / Diamond crotch gusset for extra comfort and to prevent crotch splitting
- / YKK zipper
- / Seven wider and stronger belt loops
- / Thicker and stronger top stitching thread

COLOURS (CODE)
Navy (BPCT)

SIZES
77–112R, 87–132S, 74–94L

FABRIC
100% Cotton Preshrunk Drill 310gsm



**WOMENS INDUSTRIAL
ENGINEERED DRILL PANT
BPL6021**

- / Engineered fit – contoured shaped leg and knee
- / Curved waistband to prevent gaping at back
- / Four multifunctional pockets including cargo style welt pocket
- / Mitred patch pockets
- / Double layer knee for protection against wear and tear
- / YKK zipper
- / Seven wider and stronger belt loops
- / Thicker and stronger top stitching thread

COLOURS (CODE)
Navy (BPCT)

SIZES
6–24

FABRIC
100% Cotton Preshrunk Drill 310gsm



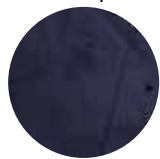
**COTTON DRILL COOL LIGHTWEIGHT
WORK PANT
BP6899**

- / Two side angled pockets with right internal fob pocket
- / YKK zipper
- / Utility open pocket with touch tape closure and pen division
- / Cargo pocket with gusset touch tape closure
- / Eyelet ventilation between legs
- / Double layered knee for extra strength

COLOURS (CODE)
Navy (BPCT)

SIZES
77–112R, 87–132S, 74–94L

FABRIC
100% Cotton Preshrunk Drill 190gsm



Eyelet crotch ventilation.



Contrast Cordura® knee patches for increased durability.



Reduced rise.



**COTTON DRILL FLAT FRONT
WORK PANT
BP6006**

- / 14x7 heavy duty drill
- / Engineered fit with internal reinforced front rise
- / Reinforced stitching at front and back rise
- / YKK zipper
- / Seven reinforced belt loops
- / Coin pocket in waistband
- / Back patch pockets



COLOURS (CODE)
Bottle (BGRG)
Navy (BPCT)

SIZES
77–112R, 87–132S

FABRIC
100% Cotton Preshrunk Drill 310gsm



**COTTON DRILL CARGO WORK PANT
BPC6006**

- / 14x7 heavy duty drill
- / Engineered fit with internal reinforced front rise
- / Reinforced stitching at front and back rise
- / YKK zipper
- / Two side angled pockets
- / Two side cargo pockets with touch tape flaps
- / LHS leg with one welt pocket with touch tape closure



- / Two back welt pockets with touch tape flaps
- / Seven reinforced belt loops

COLOURS (CODE)
Bottle (BGRG)
Navy (BPCT)

SIZES
77–112R, 87–132S

FABRIC
100% Cotton Preshrunk Drill 310gsm



**COOL LIGHTWEIGHT UTILITY PANT
BP6999**

- / Two side angled pockets with right internal fob pocket
- / YKK zipper
- / Utility open pocket with touch tape closure and pen division
- / Cargo pocket with gusset touch tape closure
- / Eyelet ventilation between legs
- / Double layered knee for extra strength



COLOURS (CODE)
Black (BBLK)
Khaki (BCDR)
Bottle (BGRG)
Navy (BPCT)

SIZES
77–112R, 87–132S, 74–94L

FABRIC
100% Cotton Preshrunk Drill 240gsm

**RAZAR CORDURA® UTILITY PANT
BPUG110**

- / Invista™ Cordura® patched pockets and knee patches for increased durability
- / Back knife/tool pocket
- / Front double layered knee patches with touch tape openings to insert knee pads (knee pads not included)
- / Back reinforced patch pockets
- / Left leg patch pocket with phone division
- / Angled side pockets



COLOURS (CODE)
Khaki (BCDR)
Navy (BPCT)

SIZES
77–112R, 92–102S

FABRIC
100% Cotton Duck Weave 350gsm
Invista™ Cordura® 100% Nylon with Silicon
Wash 500Dx500D



**INDUSTRIAL STRAIGHT LEG
WORK DENIM JEAN
BP6053**

- / Modern lower waist straight leg fit
- / Garment washed for comfort
- / Classic five pocket styling with front angle shaped access
- / Twin needle and triple needle top stitching for extra durability
- / YKK zipper

COLOURS (CODE)
Dark Denim (BDAD)

SIZES
77-112R, 92-132S, 74-94L

FABRIC
100% Cotton Denim 490gsm (14.5oz)



**WOMENS INDUSTRIAL BOOT LEG
WORK DENIM JEAN
BPL6053**

- / Modern subtle boot leg fit
- / Garment washed for comfort
- / Classic five pocket styling with front angle shaped access
- / Twin needle and triple needle top stitching for extra durability
- / YKK zipper

COLOURS (CODE)
Dark Denim (BDAD)

SIZES
8-24

FABRIC
100% Cotton Denim 490gsm (14.5oz)



**ROUGH RIDER DENIM JEANS
BP6050**

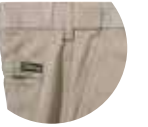
- / YKK zipper
- / Reinforced riveted stress points
- / Double stitched seams for increased durability
- / Stone wash finish
- / Five pocket jean with six belt loops



COLOURS (CODE)
Denim (BTWB)

SIZES
77-112R, 92-132S, 74-94L

FABRIC
100% Cotton Denim 465gsm (13.75oz)



Chino pant with an easy-fit waistband.

**CHINO PANT EASY-FIT WAIST
BP6092**

- / Easy-fit adjustable waist
- / Flat front design
- / Coin pocket concealed in waistband
- / YKK zipper
- / Back welt pockets with button opening
- / Two angled side pockets
- / Eight reinforced belt loops



COLOURS (CODE)
Taupe (BCND)
Navy (BTOE)

SIZES
77-112R

FABRIC
100% Cotton Preshrunk Chino 240gsm



**ROUGH RIDER DENIM STRETCH JEANS
BP6712**

- / Stretch denim for extra comfort
- / Regular fit leg and waist
- / Five pocket jean with six belt loops
- / YKK zipper
- / Reinforced riveted stress points
- / Double stitched seams for increased durability
- / Stone wash finish

COLOURS (CODE)
Denim (BTWB)

SIZES
77-112R, 92-132S, 74-94L

FABRIC
95% Cotton Denim, 5% Elastane 465gsm (13.75oz)



**WOMENS ROUGH RIDER DENIM
STRETCH JEANS
BPL6712**

- / Stretch denim for extra comfort
- / Regular fit leg and waist
- / Five pocket jean with six belt loops
- / YKK zipper
- / Reinforced riveted stress points
- / Double stitched seams for increased durability
- / Stone wash finish

COLOURS (CODE)
Denim (BTWB)

SIZES
8-24

FABRIC
95% Cotton Denim, 5% Elastane 465gsm (13.75oz)



**PERMANENT PRESS TROUSER
BP6123D**

- / Easy-fit adjustable waist
- / Coin pocket in waistband
- / YKK zipper
- / Single front pleat
- / Back welt pockets with button opening
- / Two side angled pockets



COLOURS (CODE)
Black (BBLK)
Navy (BTOE)

SIZES
77-122R, 87-132S

FABRIC
65% Polyester, 35% Viscose Gabardine
235gsm with DuPont Stain ReGuard Finish



**PERMANENT PRESS SHORT
BSH1123D**

- / Easy-fit adjustable waist
- / Coin pocket in waistband
- / YKK zipper
- / Single front pleats
- / Back welt pockets with button opening
- / Two angled side pockets



COLOURS (CODE)
Black (BBLK)
Navy (BTOE)

SIZES
77-112

FABRIC
65% Polyester, 35% Viscose
Gabardine 235gsm
with DuPont Stain ReGuard Finish



**FLEX & MOVE MECHANICAL
STRETCH SHORT
BSHC1130**

- / Contrast stretch canvas – front and back upper hip and back inner thigh
- / Curved waistband to prevent gaping at back
- / Front slant pockets
- / RHS leg utility pocket, with ruler, mobile phone, card and pen division
- / LHS welt cargo pocket
- / Twin back pockets with reinforced patches
- / Seven reinforced wider and stronger belt loops with hanger loop on front RHS leg



COLOURS (CODE)

Black (BBLK)
Khaki (BCDR)
Charcoal (BCCG)

SIZES

72–132

Active Fit

FABRIC

100% Cotton Canvas (Duck Weave) 265gsm
97% Cotton 3% Spandex (Stretch Canvas) 200gsm
98% Polyester, 2% Carbon Oxford 180gsm



**X AIRFLOW™ RIPSTOP
VENTED WORK SHORT
BSH1474**

- / Modern lower waist fit
- / Curved waistband to prevent gaping at back
- / Front slant pockets
- / YKK zipper
- / Front LHS multi-purpose pocket and flap
- / Twin back pockets with reinforced patches
- / Seven reinforced wider and stronger belt loops
- / Back yoke and diamond shaped crotch gusset ventilation
- / Back RHS leg ruler pocket with pen and knife division

COLOURS (CODE)

Black (BBLK)
Charcoal (BCCG)
Navy (BPCT)

SIZES

77–132

Modern fit

FABRIC

100% Cotton Ripstop 234gsm
100% Cotton Open Mesh 125gsm



Lightweight.

**COOL LIGHTWEIGHT
UTILITY SHORT
BSH1999**

- / Two side angled pockets with right internal fob pocket
- / YKK zipper
- / Utility open pocket with touch tape closure
- / Cargo pocket with gusset touch tape closure
- / Eyelet ventilation between legs



COLOURS (CODE)

Black (BBLK)
Khaki (BCDR)
Bottle (BGRG)
Navy (BPCT)

SIZES

77–132

FABRIC

100% Cotton Preshrunk Drill 240gsm



Lightweight.

**WOMENS COOL LIGHTWEIGHT
UTILITY SHORT
BSHL1999**

- / Two side angled pockets
- / Coin pocket on RHS
- / YKK zipper
- / Utility open pocket with touch tape closure
- / Cargo pocket with gusset touch tape closure



COLOURS (CODE)

Khaki (BCDR)
Navy (BPCT)

SIZES

6–24

FABRIC

100% Cotton Preshrunk Drill 240gsm



**ORIGINAL COTTON DRILL
WORK SHORT
BSH1007**

- / Coin pocket in waistband
- / YKK zipper
- / Two side angled pockets
- / Single front pleats
- / Back patch pockets
- / Mobile phone pocket on right side



COLOURS (CODE)

Khaki (BCDR)
Bottle (BGRG)
Navy (BPCT)

SIZES

77–132

FABRIC

100% Cotton Preshrunk Drill 310gsm



**ORIGINAL 8 POCKET
CARGO SHORT
BSHC1007**

- / Adjustable side tab on waistband
- / YKK zipper
- / Two angled side pockets
- / Two side welt pockets
- / Two side cargo pockets with touch tape flaps
- / Two back flat pockets with touch tape flaps



COLOURS (CODE)

Black (BBLK)
Khaki (BCDR)
Bottle (BGRG)
Navy (BPCT)

SIZES

77–132

FABRIC

100% Cotton Preshrunk Drill 310gsm



**COOL VENTED LIGHTWEIGHT CARGO
SHORT WITH CONTRAST STITCHING
BSHC1431**

- / Curved waistband to prevent gaping at back
- / YKK zipper
- / Back yoke and diamond shaped crotch gusset ventilation
- / Eleven multifunctional pockets including mirrored cargo pockets
- / Seven reinforced wider and stronger belt loops

COLOURS (CODE)

Navy (BPCT)

SIZES

77–132

FABRIC

100% Cotton Preshrunk Drill 190gsm
100% Polyester Mesh



**DRILL RUGBY SHORT
BSHRB1007**

- / Elasticised waistband
- / Internal draw cord
- / Internal coin pocket front right side
- / Two side pockets
- / Single back patch pocket on right side

COLOURS (CODE)

Navy (BPCT)

SIZES

77–122

FABRIC

100% Cotton Preshrunk Drill 310gsm



**DRILL SIDE TAB SHORT
BSH1256**

- / Adjustable side tab on waistband
- / YKK zipper
- / Two angled side pockets
- / Back patch pockets
- / Single front pleats

COLOURS (CODE)

Navy (BPCT)

SIZES

77–132

FABRIC

100% Cotton Preshrunk Drill 310gsm





CAMO SHORT BSH1828

- / YKK zipper
- / Two angled side pockets
- / Two side cargo pockets with button down flaps
- / Zippered pocket on right side

COLOURS (CODE)

Olive (SFON)
Natural (SPEY)

SIZES

77–112 (Olive)
77–132 (Natural)

FABRIC

100% Cotton Canvas 275gsm



DRILL COVERALL BCG007

- / Front metal press stud fastening
- / Metal press stud fastening at cuff
- / Right front security pocket
- / Left front pen and tool patch pockets
- / Hip and follow through side pockets
- / Back right patch pockets
- / Rear mobile phone pocket
- / Double layer of fabric on knees

COLOURS (CODE)

Navy (BPCT)

SIZES

77–117R, 92–132S, 74–94L

FABRIC

100% Cotton Preshrunk Drill 310gsm



ACTION BACK OVERALL BAB007

- / Front metal press stud fastening
- / Right chest front security pocket
- / Left front chest pen and tool patch pockets
- / Hip and follow through side pockets
- / Back right patch pockets
- / Rear mobile phone pocket
- / Shoulder elastic straps
- / Double layer of fabric on knees

COLOURS (CODE)

Navy (BPCT)

SIZES

77–117R, 92–132S, 74–94L

FABRIC

100% Cotton Preshrunk Drill 310gsm



RAZAR CORDURA® UTILITY SHORT BSHU1110

- / Invista™ Cordura® contrast detailing for increased durability
- / Back knife/tool pocket
- / Back reinforced patch pockets
- / Left leg patch pocket with phone division
- / Angled side pockets with durable pocket bags

COLOURS (CODE)

Khaki (BCDR)
Navy (BPCT)

SIZES

77–132

FABRIC

100% Cotton Duck Weave 350gsm

Invista™ Cordura® 100% Nylon with Silicon Wash 500Dx500D



Kyal is wearing
BS6133 & BPC6130
and Kara is wearing
BL6414 & BPL6474.



3M Taped Cool
Lightweight
Hi Vis Drill
Shirt
BS6897

3M Taped
Cool Vented
Lightweight
Cargo Pant
with Contrast
Stitching
BS6431T

SAFETYWEAR

45

Stand out and stay safe – our Safetywear works with you to keep you cool, clean, safe and seen on the job. With lab-tested fabrics and smart designs, Bisley Workwear garments stand between you and a tough day.

LIGHTWEIGHT





3M TAPED TWO TONE HI VIS X AIRFLOW™ RIPSTOP SHIRT BS6415T

- / 3M 8910P Perforated reflective taped hoop pattern
- / Twin chest patch pockets with touch tape closure
- / Left pocket with pen division and hidden phone pouch
- / Contoured shape two piece sleeve
- / Two button adjustable sleeve cuff
- / Two piece structured contrast coloured collar

COLOURS (CODE)

Yellow/Navy (TT01)
Orange/Navy (TT02)

SIZES

S–6XL
Modern fit

FABRIC

100% Cotton Ripstop 150gsm
100% Cotton Open Mesh 125gsm



3M TAPED HI VIS X AIRFLOW™ RIPSTOP SHIRT BS6416T

- / 3M 8910P Perforated reflective taped hoop pattern
- / Twin chest patch pockets with touch tape closure
- / Left pocket with pen division and hidden phone pouch
- / Two piece structured collar
- / Contoured shape two piece sleeve
- / Two button adjustable sleeve cuff

COLOURS (CODE)

Orange (BVE0)

SIZES

S–6XL
Modern fit

FABRIC

100% Cotton Ripstop 150gsm
100% Cotton Open Mesh 125gsm



WOMENS 3M TAPED TWO TONE HI VIS X AIRFLOW™ RIPSTOP SHIRT BL6415T

- / 3M 8910P Perforated reflective taped hoop pattern
- / Twin chest patch pockets with touch tape closure
- / Left pocket with pen division
- / Two piece structured contrast coloured collar
- / Contoured shape two piece sleeve
- / Two button adjustable sleeve cuff

COLOURS (CODE)

Yellow/Navy (TT01)
Orange/Navy (TT02)

SIZES

8–24

FABRIC

100% Cotton Ripstop 150gsm
100% Cotton Open Mesh 125gsm



WOMENS 3M TAPED HI VIS X AIRFLOW™ RIPSTOP SHIRT BL6416T

- / 3M 8910P Perforated reflective taped hoop pattern
- / Twin chest patch pockets with touch tape closure
- / Left pocket with pen division
- / Two piece structured collar
- / Contoured shape two piece sleeve
- / Two button adjustable sleeve cuff

COLOURS (CODE)

Orange (BVE0)

SIZES

8–24

FABRIC

100% Cotton Ripstop 150gsm
100% Cotton Open Mesh 125gsm



TWO TONE HI VIS X AIRFLOW™ RIPSTOP SHIRT BS6415

- / Twin chest patch pockets with touch tape closure
- / Left pocket with pen division and hidden phone pouch
- / Two piece structured contrast coloured collar
- / Contoured shape two piece sleeve
- / Two button adjustable sleeve cuff

COLOURS (CODE)

Yellow/Navy (TT01)
Orange/Navy (TT02)

SIZES

S–6XL
Modern fit

FABRIC

100% Cotton Ripstop 150gsm
100% Cotton Open Mesh 125gsm



TWO TONE HI VIS COOL LIGHTWEIGHT DRILL SHIRT BS6895

- / Vertical cotton mesh back ventilation
- / Underarm cotton mesh ventilation
- / Two chest pockets with button down flaps
- / Left pocket with pen division
- / Full gusset sleeve cuff
- / Two piece contrast coloured structured collar

COLOURS (CODE)

Yellow/Navy (TT01)
Orange/Navy (TT02)
Yellow/Bottle (TT03)

SIZES

S–6XL

FABRIC

100% Cotton Preshrunk Drill 155gsm
1100% Cotton Open Mesh 200gsm



TWO TONE HI VIS COOL LIGHTWEIGHT DRILL SHIRT BS1895

- / Vertical cotton mesh back ventilation
- / Underarm cotton mesh ventilation
- / Two chest pockets with button down flaps
- / Left pocket with pen division
- / Two piece contrast coloured structured collar

COLOURS (CODE)

Yellow/Navy (TT01)
Orange/Navy (TT02)
Yellow/Bottle (TT03)

SIZES

S–6XL

FABRIC

100% Cotton Preshrunk Drill 155gsm
100% Cotton Open Mesh 200gsm



3M TAPED TWO TONE COOL LIGHTWEIGHT SHIRT WITH SHOULDER TAPE BS6432T

- / 3M 8910P Perforated reflective taped hoop pattern
- / Over the shoulder tape for extra visibility
- / Vertical cotton mesh back ventilation
- / Underarm cotton mesh ventilation
- / Two chest pockets with button down flaps
- / Left pocket with pen division
- / Two piece contrast coloured structured collar
- / Full gusset sleeve cuff

COLOURS (CODE)

Yellow/Navy (TT01)
Orange/Navy (TT02)

SIZES

S–6XL

FABRIC

100% Cotton Preshrunk Drill 155gsm
100% Cotton Open Mesh 200gsm



X10

EMBROIDERY PACK



3M TAPED TWO TONE HI VIS COOL LIGHTWEIGHT SHIRT – EMBROIDERY PACK BS6896EP

- / Embroidery pack contains 10 x BS6896 same size and colour, dead man folded in a single polybag
- / 3M 8910 Reflective taped hoop pattern around body
- / Vertical cotton mesh back ventilation
- / Underarm cotton mesh ventilation
- / Two chest pockets with button down flaps
- / Left pocket with pen division
- / Full gusset sleeve cuff

COLOURS (CODE)

Yellow/Navy (TT01)
Orange/Navy (TT02)

SIZES

S–6XL

FABRIC

100% Cotton Preshrunk Drill 155gsm
100% Cotton Open Mesh 200gsm



3M TAPED TWO TONE HI VIS COOL LIGHTWEIGHT SHIRT BS6896

- / 3M 8910 Reflective taped hoop pattern around body
- / Vertical cotton mesh back ventilation
- / Underarm cotton mesh ventilation
- / Two chest pockets with button down flaps
- / Left pocket with pen division
- / Full gusset sleeve cuff
- / Two piece structured contrast coloured collar

COLOURS (CODE)

Yellow/Navy (TT01)
Orange/Navy (TT02)
Yellow/Bottle (TT03)
Pink/Navy (TT32)

SIZES

S–6XL

FABRIC

100% Cotton Preshrunk Drill 155gsm
100% Cotton Open Mesh 200gsm



Yellow/Navy, Orange/Navy, Yellow/Bottle Pink/Navy

NBCF embroidery on sleeve (TT32).



WOMENS 3M TAPED TWO TONE HI VIS COOL LIGHTWEIGHT SHIRT BL6896

- / 3M 8910 Reflective taped hoop pattern around body
- / Two chest pockets with button down flaps and pen division
- / Two piece contrast coloured structured collar
- / Vertical cotton mesh back ventilation
- / Underarm cotton mesh ventilation
- / Panelled front with bust and waist shaping
- / Full gusset sleeve cuff

COLOURS (CODE)

Yellow/Navy (TT01)
Orange/Navy (TT02)
Pink/Navy (TT32)

SIZES

8–24

FABRIC

100% Cotton Preshrunk Drill 155gsm
100% Cotton Open Mesh 200gsm



Yellow/Navy, Orange/Navy Pink/Navy



3M TAPED TWO TONE HI VIS COOL LIGHTWEIGHT CLOSED FRONT SHIRT BSC6896

- / 3M 8910 Reflective taped hoop pattern around body
- / Vertical cotton mesh back ventilation
- / Underarm cotton mesh ventilation
- / Two chest pockets with button down flaps
- / Left pocket with pen division
- / Full gusset sleeve cuff
- / Half placket
- / Two piece structured contrast coloured collar

COLOURS (CODE)

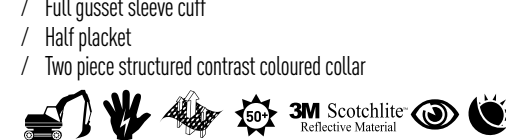
Yellow/Navy (TT01)
Orange/Navy (TT02)

SIZES

S–6XL

FABRIC

100% Cotton Preshrunk Drill 155gsm
100% Cotton Open Mesh 200gsm



Yellow/Navy, Orange/Navy, Yellow/Bottle Pink/Navy



COOL LIGHTWEIGHT HI VIS DRILL SHIRT BS6894

- / Vertical cotton mesh back ventilation
- / Underarm cotton mesh ventilation
- / Two chest pockets with button down flaps
- / Left pocket with pen division
- / Solid colour high visibility protection
- / Full gusset sleeve cuff
- / Two piece structured collar

COLOURS (CODE)

Orange (BVE0)

SIZES

S–6XL

FABRIC

100% Cotton Preshrunk Drill 155gsm
100% Cotton Open Mesh 200gsm



Yellow/Navy, Orange/Navy, Yellow/Bottle Pink/Navy



3M TAPED COOL LIGHTWEIGHT HI VIS SHIRT BS6897

- / 3M 8910 Reflective taped hoop pattern around body
- / Vertical cotton mesh back ventilation
- / Underarm cotton mesh ventilation
- / Two chest pockets with button down flaps
- / Left pocket with pen division
- / Full gusset sleeve cuff

COLOURS (CODE)

Orange (BVE0)

SIZES

XS–6XL

FABRIC

100% Cotton Preshrunk Drill 155gsm
100% Cotton Open Mesh 200gsm



Yellow/Navy, Orange/Navy, Yellow/Bottle Pink/Navy



3M TAPED X-BACK COOL LIGHTWEIGHT HI VIS DRILL SHIRT BS6156T

- / 3M Reflective taped H pattern around body with X back for NSW Rail compliancy
- / Vertical cotton mesh back ventilation
- / Underarm cotton mesh ventilation
- / Two chest pockets with button down flaps
- / Left pocket with pen division
- / Two button adjustable sleeve cuff

COLOURS (CODE)

Orange (BVE0)

SIZES

S–6XL

FABRIC

100% Cotton Preshrunk Drill 155gsm
100% Cotton Open Mesh 200gsm



Yellow/Navy, Orange/Navy, Yellow/Bottle Pink/Navy



3M TAPED COOL HI VIS LIGHTWEIGHT SHIRT BS6696T

- / 3M 8910 Reflective taped hoop pattern around body
- / Platinum Partner of NBCF embroidery
- / Two chest pockets with button down flaps and pen division
- / Two piece contrast coloured structured collar
- / Vertical cotton mesh back ventilation
- / Underarm cotton mesh ventilation
- / Two button adjustable sleeve cuff



COLOURS (CODE)
Yellow/Pink (TT33)
Orange/Pink (TT34)

SIZES
S – 6XL

FABRIC
100% Cotton Preshrunk Drill 155gsm
100% Cotton Open Mesh Knit 200gsm



HI VIS VEST BK0345

- / Vertical touch-tape front fastening
- / Back tail drops down to cover lower back



Yellow and Orange Only

Pink colourway does not comply to day time Hi Vis standards AS/NZS 4602.1:2011

COLOURS (CODE)
Yellow (BF51)
Orange (BF61)
Pink (BF41)

SIZES
S – 6XL

FABRIC
100% Polyester 120gsm



WOMENS 3M TAPED HI VIS COOL LIGHTWEIGHT SHIRT BL6696T

- / 3M 8910 Reflective taped hoop pattern around body
- / Platinum Partner of NBCF embroidery
- / Two chest pockets with button down flaps and pen division
- / Two piece contrast coloured structured collar
- / Vertical cotton mesh back ventilation
- / Underarm cotton mesh ventilation
- / Panelled front with bust and waist shaping
- / Two button adjustable sleeve cuff



COLOURS (CODE)
Yellow/Pink (TT33)
Orange/Pink (TT34)

SIZES
8 – 24

FABRIC
100% Cotton Preshrunk Drill 155gsm
100% Cotton Open Mesh Knit 200gsm



HI VIS VEST X BACK TAPE BT0347

- / Reflective taped around the body and over the shoulders in the H pattern with X on the back
- / Vertical touch tape front fastening
- / Back tail drops down to cover lower back



COLOURS (CODE)
Yellow (BF51)
Orange (BF61)

SIZES
S – 6XL

FABRIC
100% Polyester 120gsm



TWO TONE HI VIS POLO SHIRT BK1234

- / Moisture wicking technology
- / Dual layered fabric with cotton against the skin
- / Contrast coloured ribbed collar with hi-vis tipping
- / Left chest pocket with stitched pen division



COLOURS (CODE)
Yellow/Navy (TT04)
Orange/Navy (TT05)
Yellow/Bottle (TT06)

SIZES
S – 6XL

FABRIC
52% Cotton/48% Polyester Hydrophilic Knit 195gsm



3M TAPED HI VIS TWO TONE POLYESTER MICROMESH POLO BK1258T

- / 3M 8712P Perforated reflective taped hoop pattern around body with additional tape on shoulders
- / Perforated heat apply reflective tape used to relieve heat stress and allow for movement and stretch
- / Contrast coloured ribbed collar with hi-vis tipping



COLOURS (CODE)
Yellow/Navy (TT04)
Orange/Navy (TT05)

SIZES
S – 6XL

FABRIC
100% Polyester Micromesh 165gsm



TWO TONE HI VIS POLO SHIRT BK6234

- / Moisture wicking technology
- / Dual layered fabric with cotton against the skin
- / Contrast coloured ribbed collar with hi-vis tipping
- / Left chest pocket with stitched pen division
- / Rib sleeve cuff



COLOURS (CODE)
Yellow/Navy (TT04)
Orange/Navy (TT05)
Yellow/Bottle (TT06)

SIZES
S – 6XL

FABRIC
52% Cotton/48% Polyester Hydrophilic Knit 195gsm



3M TAPED HI VIS TWO TONE POLYESTER MICROMESH POLO BK6258T

- / 3M 8712P Perforated reflective taped hoop pattern around body with additional tape on shoulders
- / Perforated heat apply reflective tape used to relieve heat stress and allow for movement and stretch
- / Contrast coloured ribbed collar with hi-vis tipping
- / Rib sleeve cuff



COLOURS (CODE)
Yellow/Navy (TT04)
Orange/Navy (TT05)

SIZES
S – 6XL

FABRIC
100% Polyester Micromesh 165gsm



X AIRFLOW™ 3M TAPED RIPSTOP VENTED WORK PANT BP6474T

- / 3M 8910P Perforated reflective tape around lower leg
- / Modern lower waist fit
- / Curved waistband to prevent gaping at back
- / Front slant pockets
- / YKK zipper
- / Front LHS multipurpose pocket and flap
- / Twin back pockets with reinforced patches
- / Back RHS leg ruler pocket with pen and knife division
- / Back yoke and diamond shape crotch ventilation
- / Double layered knee patches with touch tape openings to insert knee pad (pads not included)
- / Seven reinforced wider and stronger belt loops with hanger loop on front LHS leg

COLOURS (CODE)

Navy (BPCT)

SIZES

77–112R, 87–132S
Modern fit

FABRIC

100% Cotton Ripstop 234gsm
100% Cotton Open Mesh 125gsm



WOMENS X AIRFLOW™ 3M TAPED RIPSTOP VENTED WORK PANT BPL6474T

- / 3M 8910P Perforated reflective tape around lower leg
- / Curved waistband to prevent gaping at back
- / Front slant pockets
- / Multi purpose pockets on front leg
- / Twin back pockets with reinforced patches
- / Seven reinforced wider and stronger belt loops
- / Back yoke ventilation
- / Front double layered knee patches

COLOURS (CODE)

Navy (BPCT)

SIZES

6–24

FABRIC

100% Cotton Twill Ripstop 234gsm
100% Cotton Open Mesh 125gsm



X AIRFLOW™ 3M TAPED RIPSTOP ENGINEERED CARGO WORK PANT BPC6475T

- / 3M 8910P Perforated reflective tape around lower leg
- / Modern engineered fit with contoured leg
- / Curved waistband to prevent gaping at back
- / Front slant pockets
- / YKK zipper
- / RHS leg utility pocket, including ruler, mobile phone card and pen division
- / LHS leg multi cargo pocket, mobile phone pocket and two pen divisions
- / Twin back pockets with reinforced patches
- / Seven reinforced wider and stronger belt loops
- / Double layer contoured knee
- / Hem boot cuff

COLOURS (CODE)

Navy (BPCT)

SIZES

77–112R, 87–132S
Modern fit

FABRIC

100% Cotton Ripstop 234gsm



3M TAPED COOL VENTED LIGHTWEIGHT CARGO SHORT WITH CONTRAST STITCHING BSHC1432T

- / Curved waistband to prevent gaping at back
- / 3M 8910 reflective tape around hem
- / YKK zipper
- / Back yoke with open mesh vents
- / Mitred angled front pockets
- / Multifunctional cargo pocket
- / Mobile phone pocket with touch tape closure
- / Back hip pocket with utility loop
- / Diamond shape crotch
- / All stress points reinforced with heavy duty bartacks

COLOURS (CODE)

Navy (BPCT)

SIZES

77–132

FABRIC

100% Cotton Preshrunk Drill 190gsm
100% Polyester Mesh



Soft feel fabric.



3M TAPED COOL VENTED LIGHTWEIGHT CARGO PANT WITH CONTRAST STITCHING BPC6431T

- / 3M 8910P Perforated reflective tape around upper leg
- / Curved waistband to prevent gaping
- / Eleven multi-functional pockets including mirrored cargo pockets
- / Back yoke and diamond shape crotch gusset ventilation
- / All stress points reinforced with heavy duty bartacks
- / YKK zipper
- / Seven reinforced wider and stronger belt loops

COLOURS (CODE)

Navy (BPCT)

SIZES

77–112R, 87–132S

FABRIC

100% Cotton Preshrunk Drill 190gsm
100% Polyester Mesh



Soft feel fabric.



WOMENS 3M TAPED COOL VENTED LIGHTWEIGHT PANT WITH CONTRAST STITCHING BPL6431T

- / 3M 8910P Perforated reflective tape around upper leg
- / Mitred angled front pockets
- / Back yoke with open mesh vents
- / Welt leg pockets with touch tape closure
- / YKK zipper
- / RHS back patch pocket

COLOURS (CODE)

Navy (BPCT)

SIZES

6–24

FABRIC

100% Cotton Preshrunk Drill 190gsm
100% Polyester Mesh



Soft feel fabric.



3M TAPED TWO TONE HI VIS LIGHTWEIGHT COVERALLS BC6719TW

- / 3M 8910 Reflective taped hoop pattern around body
- / Nylon press stud front and sleeve cuff fastening
- / Front right chest pocket with nylon zippered opening
- / Left front chest patch pocket with tool/ knife division
- / Angled side pockets and side openings to body
- / Double layered knees to prevent wear and tear
- / Back utility patch pocket and ruler/ phone pocket

COLOURS (CODE)

Yellow/Navy (TT01)
Orange/Navy (TT02)

SIZES

77–117R, 92–132S, 74–94L

FABRIC

100% Cotton Preshrunk Drill 190gsm



3M TAPED HI VIS LIGHWEIGHT COVERALLS BC6718TW

- / 3M 8910 Reflective taped hoop pattern around body
- / Nylon press stud front and sleeve cuff fastening
- / Front right chest pocket with nylon zippered opening
- / Left front chest patch pocket with tool/ knife division
- / Angled side pockets and side openings to body
- / Double layered knees to prevent wear and tear
- / Back utility patch pocket and ruler/ phone pocket

COLOURS (CODE)

Orange (BVE0)

SIZES

77–117R, 92–132S, 74–94L

FABRIC

100% Cotton Preshrunk Drill 190gsm



SAFETY WEAR REGULAR WEIGHT



TWO TONE HI VIS DRILL SHIRT BS6267

- / Two chest pockets with button down flaps
- / Left pocket with pen division
- / Two piece contrast coloured structured collar
- / Two button adjustable sleeve cuff



COLOURS (CODE)

Yellow/Navy (TT01)
Orange/Navy (TT02)
Yellow/Bottle (TT03)

SIZES

XS-6XL

FABRIC

100% Cotton Preshrunk Drill 190gsm



WOMENS TWO TONE HI VIS DRILL SHIRT BL6267

- / Panelled front with bust and waist shaping
- / Two chest pockets with button down flaps
- / Two piece contrast coloured structured collar
- / Left pocket with pen division
- / Two button adjustable sleeve cuff



COLOURS (CODE)

Yellow/Navy (TT01)
Orange/Navy (TT02)

SIZES

8-24

FABRIC

100% Cotton Preshrunk Drill 190gsm



TWO TONE CLOSED FRONT HI VIS DRILL SHIRT BSC6267

- / Two chest pockets with button down flaps
- / Left pocket with pen division
- / Two piece contrast coloured structured collar
- / Two button adjustable sleeve cuff
- / Half placket



COLOURS (CODE)

Yellow/Navy (TT01)
Orange/Navy (TT02)
Yellow/Bottle (TT03)

SIZES

S-6XL

FABRIC

100% Cotton Preshrunk Drill 190gsm



HI VIS DRILL SHIRT BS6339

- / Two chest pockets with button down flaps
- / Left pocket with pen division
- / Two button adjustable sleeve cuff
- / Two piece structured collar



COLOURS (CODE)

Orange (BVE0)

SIZES

S-6XL

FABRIC

100% Cotton Preshrunk Drill 190gsm



HI VIS CLOSED FRONT COTTON DRILL SHIRT BSC6433

- / Half placket
- / Two cargo chest pockets with button down flaps
- / Left chest pocket with pen division
- / Centre back box pleat
- / Two piece structured collar
- / Two button adjustable sleeve cuff



COLOURS (CODE)
Orange (BVEO)

SIZES
S-6XL

FABRIC
100% Cotton Preshrunk Drill 190gsm



3M TAPED HI VIS CLOSED FRONT DRILL SHIRT BTC6482

- / 3M 8910 Reflective taped hoop pattern around body
- / Half placket
- / Two chest pockets with button down flaps
- / Left pocket with pen division
- / Two piece structured collar
- / Two button adjustable sleeve cuff



COLOURS (CODE)
Orange (BVEO)

SIZES
S-6XL

FABRIC
100% Cotton Preshrunk Drill 190gsm



3M TAPED HI VIS INDUSTRIAL COOL VENT SHIRT BS6445T

- / 3M 9920 Reflective taped hoop pattern around body
- / Twin chest pockets with flaps
- / Chevron tape detailing
- / Underarm and upper back cooling vents
- / Left pocket with pen division
- / Two piece sleeve with elbow dart



COLOURS (CODE)
Yellow (BBLY)
Orange (BVEO)

SIZES
S-6XL

FABRIC
100% Cotton Preshrunk Drill 190gsm
100% Cotton Open Mesh 200gsm



WOMENS 3M TAPED HI VIS INDUSTRIAL COOL VENT SHIRT BL6445T

- / 3M 9920 Reflective taped hoop pattern around body
- / Twin chest pockets with flaps
- / Chevron tape detailing
- / Underarm and upper back cooling vents
- / Left pocket with pen division
- / Two piece sleeve with elbow dart



COLOURS (CODE)
Yellow (BBLY)
Orange (BVEO)

SIZES
8-24

FABRIC
100% Cotton Preshrunk Drill 190gsm
100% Cotton Open Mesh 200gsm



3M TAPED NIGHT DRILL SHIRT BS6807T

- / 3M 8910 reflective tape in H pattern around body with X back and extra back hem tape plus biomotion taping on sleeve
- / Two chest pockets with touch tape closure flaps
- / Left pocket with pen division
- / Two button adjustable sleeve cuff



COLOURS (CODE)
White (BWHT)

SIZES
S-6XL

FABRIC
100% Cotton Preshrunk Drill 310gsm



3M TAPED HI VIS DRILL SHIRT BT6482

- / 3M 8910 Reflective taped hoop pattern around body
- / Two chest pockets with button down flaps
- / Left pocket with pen division
- / Two piece structured collar
- / Two button adjustable sleeve cuff



COLOURS (CODE)
Orange (BVEO)

SIZES
XS-6XL

FABRIC
100% Cotton Preshrunk Drill 190gsm



3M TAPED TWO TONE HI VIS INDUSTRIAL COOL VENT SHIRT BS6448T

- / 3M 9920 Reflective taped hoop pattern around body
- / Twin chest pockets with flaps
- / Chevron tape detailing
- / Underarm and upper back cooling vents
- / Left pocket with pen division
- / Two piece sleeve with elbow dart
- / Spliced front only with full hi vis back



COLOURS (CODE)
YelLow/Navy (TT01)
Orange/Navy (TT02)

SIZES
S-6XL

FABRIC
100% Cotton Preshrunk Drill 190gsm
100% Cotton Open Mesh 200gsm



WOMENS 3M TAPED TWO TONE HI VIS INDUSTRIAL COOL VENT SHIRT BL6448T

- / 3M 9920 Reflective taped hoop pattern around body
- / Twin chest pockets with flaps
- / Chevron tape detailing
- / Underarm and upper back cooling vents
- / Left pocket with pen division
- / Two piece sleeve with elbow dart
- / Spliced front only with full hi vis back



COLOURS (CODE)
Yellow/Navy (TT01)
Orange/Navy (TT02)

SIZES
8-24

FABRIC
100% Cotton Preshrunk Drill 190gsm
100% Cotton Open Mesh 200gsm



**3M TAPED TWO TONE HI VIS
DRILL SHIRT
BS6267T**

- / 3M 8910 Reflective taped H pattern with double hoop at waist
- / Two chest pockets with button down flaps
- / Left pocket with pen division
- / Two piece contrast coloured structured collar
- / Two button adjustable sleeve cuff

COLOURS (CODE)

Yellow/Navy (TT01)
Orange/Navy (TT02)
Yellow/Bottle (TT03)

SIZES

S – 6XL

FABRIC

100% Cotton Preshrunk Drill 190gsm



**3M TAPED TWO TONE HI VIS
DRILL SHIRT
BT6456**

- / 3M 8910 Reflective taped hoop pattern around body
- / Two chest pockets with button down flaps
- / Left pocket with pen division
- / Two piece contrast coloured structured collar
- / Two button adjustable sleeve cuff

COLOURS (CODE)

Yellow/Navy (TT01)
Orange/Navy (TT02)
Yellow/Bottle (TT03)

SIZES

S – 6XL

FABRIC

100% Cotton Preshrunk Drill 190gsm



**3M TAPED TWO TONE CLOSED
FRONT HI VIS DRILL SHIRT
BTC6456**

- / 3M 8910 Reflective taped hoop pattern around body
- / Half placket
- / Two chest pockets with button down flaps
- / Left pocket with pen division
- / Two piece contrast coloured structured collar
- / Two button adjustable sleeve cuff

COLOURS (CODE)

Yellow/Navy (TT01)
Orange/Navy (TT02)

SIZES

S – 6XL

FABRIC

100% Cotton Preshrunk Drill 190gsm



**3M TAPED TWO TONE HI VIS
DRILL SHIRT
BT6458**

- / 3M 8910 Reflective taped H pattern with single hoop
- / Two chest pockets with button down flaps
- / Left pocket with pen division
- / Two piece contrast coloured structured collar
- / Two button adjustable sleeve cuff

COLOURS (CODE)

Yellow/Navy (TT01)
Orange/Navy (TT02)

SIZES

S – 6XL

FABRIC

100% Cotton Preshrunk Drill 190gsm



**WOMENS 3M TAPED TWO TONE
HI VIS DRILL SHIRT
BLT6456**

- / 3M 8910 Reflective taped hoop pattern around body
- / Panelled front with bust and waist shaping
- / Two chest pockets with button down flaps
- / Two piece contrast coloured structured collar
- / Left pocket with pen division
- / Two button adjustable sleeve cuff

COLOURS

Yellow/Navy (TT01)
Orange/Navy (TT02)

SIZES

8 – 24

COLOURS (CODE)

100% Cotton Preshrunk Drill 190gsm



X10

EMBROIDERY PACK



**3M TAPED TWO TONE HI VIS
SHIRT - EMBROIDERY PACK
BT6456EP**

- / Embroidery pack contains 10 x BT6456 same size and colour, dead man folded in a single polybag
- / 3M 8910 Reflective taped hoop pattern around body
- / Two chest pockets with button down flaps
- / Left pocket with pen division
- / Two piece contrast coloured structured collar
- / Two button adjustable sleeve cuff

COLOURS

Yellow/Navy (TT01)
Orange/Navy (TT02)

SIZES

S – 6XL

FABRIC

100% Cotton Preshrunk Drill 190gsm





**3M TAPED INDUSTRIAL ENGINEERED CARGO PANT
BPC6021T**

- / 3M 9920 Reflective tape around lower leg
- / Engineered fit – contoured shaped leg and knee
- / Curved waistband to prevent gaping at back
- / Ten multi-functional pockets including hidden tool pockets
- / Mitred patch pockets
- / Double layer knee for protection against wear and tear
- / Diamond crotch gusset for extra comfort and to prevent crotch splitting
- / YKK zipper
- / Seven wider and stronger belt loops
- / Thicker and stronger top stitching thread

COLOURS (CODE)
Navy (BPCT)

SIZES
77–112R, 87–132S, 74–94L

FABRIC
100% Cotton Preshrunk Drill 310gsm



**WOMENS 3M TAPED INDUSTRIAL ENGINEERED DRILL PANT
BPL6021T**

- / 3M 9920 Reflective tape around lower leg
- / Engineered fit – contoured shaped leg and knee
- / Curved waistband to prevent gaping at back
- / Four multifunctional pockets including cargo style welt pocket
- / Mitred patch pockets
- / Double layer knee for protection against wear and tear
- / Seven wider and strong belt loops

COLOURS (CODE)
Navy (BPCT)

SIZES
6–24

FABRIC
100% Cotton Preshrunk Drill 310gsm



Coin pocket
in waistband.

3M 8910
Reflective
taped hoop
pattern
above
knees.

**3M TAPED COTTON DRILL WORK PANT
BP6006T**

- / 3M 8910 Reflective tape above knee
- / 14x7 heavy duty drill
- / Modern fit with internal reinforced front rise
- / Reinforced stitching at front and back rise
- / YKK zipper
- / Seven reinforced belt loops
- / Coin pocket in waistband
- / Back patch pockets

COLOURS (CODE)
Navy (BPCT)

SIZES
77–112R, 87–132S

FABRIC
100% Cotton Preshrunk Drill 310gsm



**3M TAPED COTTON DRILL CARGO WORK PANT
BPC6006T**

- / 3M 8910 Reflective tape around lower leg
- / 14x7 heavy duty drill
- / Modern fit with internal reinforced front rise
- / Reinforced stitching at front and back rise
- / YKK zipper
- / Two side angled pockets
- / Two side cargo pockets with touch tape flaps
- / LHS leg with one welt pocket with touch tape closure
- / Two back welt pockets with touch tape flaps
- / Seven reinforced belt loops

COLOURS (CODE)
Navy (BPCT)

SIZES
77–112R, 87–132S

FABRIC
100% Cotton Preshrunk Drill 310gsm



**3M DOUBLE TAPED COTTON DRILL CARGO WORK PANT
BPC6003T**

- / 3M 8910 Reflective tape around upper and lower leg
- / 14x7 heavy duty drill
- / Modern fit with internal reinforced front rise
- / Reinforced stitching at front and back rise
- / YKK zipper
- / Two side angled pockets
- / Two side cargo pockets with touch tape flaps
- / LHS leg with one welt pocket with touch tape closure
- / Two back welt pockets with touch tape flaps
- / Seven reinforced belt loops

COLOURS (CODE)
Navy (BPCT)

SIZES
77–112R, 87–132S

FABRIC
100% Cotton Preshrunk Drill 310gsm



**3M DOUBLE TAPED WORK PANT
BP6003T**

- / 3M 8910 Reflective tape around upper and lower leg
- / 14x7 heavy duty drill
- / Modern fit with internal reinforced front rise
- / Reinforced stitching at front and back rise
- / YKK zipper
- / Seven reinforced belt loops
- / Coin pocket in waistband
- / Back patch pockets

COLOURS (CODE)
Navy (BPCT)

SIZES
77–112R, 87–132S

FABRIC
100% Cotton Preshrunk Drill 310gsm



**3M TAPED 8 POCKET CARGO PANT
BPC6007T**

- / 3M 8910 Reflective tape around leg
- / Adjustable side tab on waistband
- / YKK zipper
- / Two angled side pockets
- / Two side welt pockets
- / Two side cargo pockets with touch tape flaps
- / Two back flat pockets with touch tape flaps

COLOURS (CODE)
Navy (BPCT)

SIZES
77–112R, 87–132S, 74–94L

FABRIC
100% Cotton Preshrunk Drill 310gsm





**3M TAPED ORIGINAL WORK PANT
BP6007T**

- / 3M 8910 Reflective tape around lower leg
- / Mobile phone pocket on right side
- / Seven reinforced belt loops
- / Single front pleats
- / Back patch pockets
- / Coin pocket in waistband
- / YKK zipper

COLOURS (CODE)

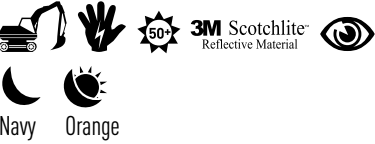
Navy (BPCT)
Orange (BVEO)

SIZES

77–112R, 87–132S, 74–94L

FABRIC

100% Cotton Preshrunk Drill 310gsm



**WOMENS 3M TAPED ORIGINAL WORK PANT
BPL6007T**

- / 3M 8910 Reflective tape around lower leg
- / Mobile phone pocket on right side
- / Key loop on front left side
- / Two angled side pockets
- / YKK zipper
- / Back patch pockets

COLOURS (CODE)

Navy (BPCT)

SIZES

6–24

FABRIC

100% Cotton Preshrunk Drill 310gsm



**TWO TONE HI VIS DRILL COVERALL
BC6357**

- / Metal press stud front and sleeve cuff fastening
- / Front right chest pocket with nylon zippered opening
- / Left front chest patch pocket with tool/ knife division
- / Angled side pockets and side openings to body
- / Double layered knees to prevent wear and tear
- / Back utility patch pocket and ruler/ phone pocket

COLOURS (CODE)

Yellow/Navy (TT01)
Orange/Navy (TT02)

SIZES

77–117R, 87–132S, 74–94L

FABRIC

100% Cotton Preshrunk Drill 310gsm



**3M TAPED HI VIS DRILL COVERALL
BC607T8**

- / 3M 8910 Reflective taped hoop pattern around body
- / Metal press stud front and sleeve cuff fastening
- / Front right chest pocket with nylon zippered opening
- / Left front chest patch pocket with tool/ knife division
- / Angled side pockets and side openings to body
- / Double layered knees to prevent wear and tear
- / Back utility patch pocket and ruler/ phone pocket

COLOURS (CODE)

Orange (BVEO)

SIZES

77–117R, 87–132S, 74–94L

FABRIC

100% Cotton Preshrunk Drill 310gsm



**3M TAPED NIGHT COVERALL
BC6806T**

- / 3M 8910 reflective tape H pattern around body with X back and biomotion taping on sleeve and leg
- / 14 x 7 Heavy Duty White Drill fabric
- / New fit with set in sleeve
- / Concealed metal press studs at front and sleeve cuff
- / Front right chest pocket with zippered opening
- / Left front chest pocket with tool/knife division
- / Angled side pockets and side opening to body
- / Back utility patch pocket and ruler pocket
- / Additional mobile phone pocket with flap at outer ruler pocket
- / Double layer knee patch

COLOURS (CODE)

White (BWHT)

SIZES

77–117R, 92–132S

FABRIC

100% Cotton Preshrunk Drill 310gsm



**3M TAPED NIGHT COTTON DRILL PANT
BP6808T**

- / 3M 8910 Reflective biomotion tape around upper and lower leg
- / 14 x 7 Heavy Duty White Drill fabric
- / New improved fit with internal reinforced front rise
- / YKK zipper
- / Seven reinforced belt loops
- / Coin pocket in waistband
- / RHS Mobile phone leg pocket with touch tape closure
- / Back mitred pockets
- / Reinforced stitching at front and back rise

COLOURS (CODE)

White (BWHT)

SIZES

77–112R, 87–132S

FABRIC

100% Cotton Preshrunk Drill 310gsm



**3M TAPED ROUGH RIDER JEANS
BP6050T**

- / 3M 8910 Reflective tape around lower leg
- / Five pocket jean with six belt loops
- / YKK zipper
- / Reinforced riveted stress points
- / Double stitched seams for increased durability
- / Stone wash finish

COLOURS (CODE)

Denim (BTWB)

SIZES

77–112R, 87–132S, 74–94L

FABRIC

100% Cotton Denim 390gsm (13.75oz)



**INDUSTRIAL STRAIGHT LEG
WORK DENIM JEAN
BP6053**

- / Modern lower waist straight leg fit
- / Garment washed for comfort
- / Classic five pocket styling with front angle-shaped access
- / Twin needle and triple needle top stitching for extra durability
- / YKK zipper

COLOURS (CODE)

Dark Denim (BDAD)

SIZES

77–112R, 87–132S, 74–94L

FABRIC

100% Cotton Denim 490gsm (14.5oz)



**WOMENS INDUSTRIAL BOOT LEG
WORK DENIM JEAN
BPL6053**

- / Modern subtle boot leg fit
- / Garment washed for comfort
- / Classic five pocket styling with front angle-shaped access
- / Twin needle and triple needle top stitching for extra durability
- / YKK zipper

COLOURS (CODE)

Dark Denim (BDAD)

SIZES

8–24

FABRIC

100% Cotton Denim 490gsm (14.5oz)





3M Taped Two Tone Hi Vis
X Airflow™ Ripstop Shirt
BS6415T

X Airflow™ 3M Taped Ripstop
Engineered Cargo Work Pant
BPC6475T

Refer to page 66 & 69 for more features and colours.



65 X AIRFLOW™

Bisley
WORKWEAR

We've developed lightweight, breathable garments with mesh ventilation to allow airflow where you need it most.

Two Tone Hi Vis
X Airflow™
Ripstop Shirt
BS6415

X Airflow™ 3M Taped
Ripstop Engineered
Cargo Work Pant
BPC6475T





3M TAPED TWO TONE HI VIS X AIRFLOW™ RIPSTOP SHIRT BS6415T

- / 3M 8910P Perforated Reflective taped hoop pattern
- / Twin chest patch pockets with touch tape closure
- / Left pocket with pen division and hidden phone pouch
- / Contoured shape two piece sleeve
- / Two button adjustable sleeve cuff
- / Two piece structured contrast coloured collar

COLOURS (CODE)

Yellow/Navy (TT01)
Orange/Navy (TT02)

SIZES

S-6XL
Modern fit

FABRIC

100% Cotton Ripstop 150gsm
100% Cotton Open Mesh 125gsm



WOMENS 3M TAPED TWO TONE HI VIS X AIRFLOW™ RIPSTOP SHIRT BL6415T

- / 3M 8910P Perforated Reflective taped hoop pattern
- / Twin chest patch pockets with touch tape closure
- / Left pocket with pen division
- / Two piece structured collar
- / Contoured shape two piece sleeve
- / Two button adjustable sleeve cuff

COLOURS (CODE)

Yellow/Navy (TT01)
Orange/Navy (TT02)

SIZES

8-24

FABRIC

100% Cotton Ripstop 150gsm
100% Cotton Open Mesh 125gsm



TWO TONE HI VIS X AIRFLOW™ RIPSTOP SHIRT BS6415

- / Twin chest patch pockets with touch tape closure
- / Left pocket with pen division and hidden phone pouch
- / Two piece structured collar
- / Contoured shape two piece sleeve
- / Two button adjustable sleeve cuff

COLOURS (CODE)

Yellow/Navy (TT01)
Orange/Navy (TT02)

SIZES

S-6XL
Modern fit

FABRIC

100% Cotton Ripstop 150gsm
100% Cotton Open Mesh 125gsm



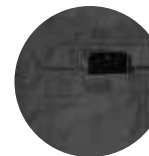
Hidden roll up sleeve tab.



Underarm vents.



Front side vent.



Hidden mobile phone pocket.



3M TAPED HI VIS X AIRFLOW™ RIPSTOP SHIRT BS6416T

- / 3M 8910P Perforated Reflective taped hoop pattern
- / Twin chest patch pockets with touch tape closure
- / Left pocket with pen division and hidden phone pouch
- / Two piece structured collar
- / Contoured shape two piece sleeve
- / Two button adjustable sleeve cuff

COLOURS (CODE)

Orange (BVE0)

SIZES

S-6XL
Modern fit

FABRIC

100% Cotton Ripstop 150gsm
100% Cotton Open Mesh 125gsm



WOMENS 3M TAPED HI VIS X AIRFLOW™ RIPSTOP SHIRT BL6416T

- / 3M 8910P Perforated Reflective taped hoop pattern
- / Twin chest patch pockets with touch tape closure
- / Left pocket with pen division
- / Two piece structured collar
- / Contoured shape two piece sleeve
- / Two button adjustable sleeve cuff

COLOURS (CODE)

Orange (BVE0)

SIZES

8-24

FABRIC

100% Cotton Ripstop 150gsm
100% Cotton Open Mesh 125gsm



WOMENS X AIRFLOW™ RIPSTOP SHIRT BL6414

- / Twin chest patch pockets with touch tape closure
- / Contoured shape two piece sleeve
- / Twin sleeve patch pocket and flap with pen division
- / Hidden roll up sleeve tab in sleeve pocket
- / Two piece structured collar
- / Two button adjustable sleeve cuff

COLOURS (CODE)

Navy (BPCT)
Charcoal (BCCG)

SIZES

8-24

FABRIC

100% Cotton Ripstop 150gsm
100% Cotton Open Mesh 125gsm



X AIRFLOW™ RIPSTOP SHIRT BS6414

- / Twin chest patch pockets with touch tape closure
- / Contoured shape two piece sleeve
- / Twin sleeve patch pocket and flap with pen division
- / Hidden roll up sleeve tab in sleeve pocket
- / Two piece structured collar
- / Two button adjustable sleeve cuff

COLOURS (CODE)

Navy (BPCT)
Charcoal (BCCG)

SIZES

S-6XL
Modern fit

FABRIC

100% Cotton Ripstop 150gsm
100% Cotton Open Mesh 125gsm





**X AIRFLOW™ RIPSTOP
ENGINEERED CARGO WORK PANT
BPC6475**

- / Modern engineered fit with contoured leg
- / Curved waistband to prevent gaping at back
- / Front slant pockets
- / YKK zipper
- / RHS leg utility pocket, including ruler, mobile phone, card and pen division
- / LHS leg multi cargo pocket, mobile phone pocket and two pen divisions
- / Twin back pockets with reinforced patches
- / Seven reinforced wider and stronger belt loops
- / Double layer contoured knee
- / Hem boot cuff



COLOURS (CODE)

Black (BBLK)
Charcoal (BCCG)
Navy (BPCT)

SIZES

77–112R, 87–132S
Modern fit

FABRIC

100% Cotton Ripstop 234gsm



**X AIRFLOW™ RIPSTOP
VENTED WORK PANT
BP6474**

- / Modern lower waist fit
- / Curved waistband to prevent gaping at back
- / Front slant pockets
- / YKK zipper
- / Front LHS multi purpose pocket and flap
- / Twin back pockets with reinforced patches
- / Back RHS leg ruler pocket with pen and knife division
- / Back yoke and diamond shape crotch ventilation
- / Double layered knee patches with touch tape openings to insert knee pad (pads not included)
- / Seven reinforced wider and stronger belt loops



COLOURS (CODE)

Black (BBLK)
Charcoal (BCCG)
Navy (BPCT)

SIZES

77–112R, 87–132S
Modern fit

FABRIC

100% Cotton Ripstop 234gsm
100% Cotton Open Mesh 125gsm



**WOMENS X AIRFLOW™ RIPSTOP
VENTED WORK PANT
BPL6474**

- / Curved waistband to prevent gaping at back
- / Front slant pockets
- / YKK zipper
- / Multi purpose pockets on front legs
- / Twin back pockets with reinforced patches
- / Seven reinforced wider and stronger belt loops
- / Back yoke ventilation
- / Front double layered knee patches



COLOURS (CODE)

Black (BBLK)
Charcoal (BCCG)
Navy (BPCT)

SIZES

6–24

FABRIC

100% Cotton Twill Ripstop 234gsm
100% Cotton Open Mesh 125gsm



**X AIRFLOW™ 3M TAPED RIPSTOP
VENTED WORK PANT
BP6474T**

- / 3M 8910P Perforated Reflective tape around lower leg
- / Modern lower waist fit
- / Curved waistband to prevent gaping at back
- / Front slant pockets
- / YKK zipper
- / Front LHS multi purpose pocket and flap
- / Twin back pockets with reinforced patches
- / Back RHS leg ruler pocket with pen and knife division
- / Back yoke and diamond shape crotch ventilation
- / Double layered knee patches with touch tape openings to insert knee pad (pads not included)
- / Seven reinforced wider and stronger belt loops with hanger loop on front LHS leg

COLOURS (CODE)

Navy (BPCT)

SIZES

77–112R, 87–132S
Modern fit

FABRIC

100% Cotton Ripstop 234gsm
100% Cotton Open Mesh 125gsm



**X AIRFLOW™ 3M TAPED RIPSTOP
ENGINEERED CARGO WORK PANT
BPC6475T**

- / 3M 8910P Perforated Reflective tape around lower leg
- / Modern engineered fit with contoured leg
- / Curved waistband to prevent gaping at back
- / Front slant pockets
- / YKK zipper
- / RHS leg utility pocket, including ruler, mobile phone card and pen division
- / LHS leg multi cargo pocket, mobile phone pocket and two pen divisions
- / Twin back pockets with reinforced patches
- / Seven reinforced wider and stronger belt loops
- / Double layer contoured knee
- / Hem boot cuff

COLOURS (CODE)

Navy (BPCT)

SIZES

77–112R, 87–132S
Modern fit

FABRIC

100% Cotton Ripstop 234gsm



**WOMENS X AIRFLOW™ 3M TAPED
RIPSTOP VENTED WORK PANT
BPL6474T**

- / 3M 8910P Perforated Reflective tape around lower leg
- / Curved waistband to prevent gaping at back
- / Front slant pockets
- / Multi purpose pockets on front legs
- / Twin back pockets with reinforced patches
- / Seven reinforced wider and stronger belt loops
- / Back yoke ventilation
- / Front double layered knee patches

COLOURS (CODE)

Navy (BPCT)

SIZES

6–24

FABRIC

100% Cotton Twill Ripstop 234gsm
100% Cotton Open Mesh 125gsm



**X AIRFLOW™ RIPSTOP
VENTED WORK SHORT
BSH1474**

- / Modern lower waist fit
- / Curved waistband to prevent gaping at back
- / Front slant pockets
- / YKK zipper
- / Front LHS multi purpose pocket and flap
- / Twin back pockets with reinforced patches
- / Seven reinforced wider and stronger belt loops
- / Back yoke and diamond shaped crotch gusset ventilation
- / Back RHS leg ruler pocket with pen and knife division



COLOURS (CODE)

Black (BBLK)
Charcoal (BCCG)
Navy (BPCT)

SIZES

77–132
Modern fit

FABRIC

100% Cotton Ripstop 234gsm
100% Cotton Open Mesh 125gsm

Bisley
WORKWEAR

**FLX &
MOVE**



70 FLEX & MOVE

Flex & Move offers form as well as function. Contrast coloured shirts, pants and shorts have you covered while the reinforced canvas provides durability and the stretch panels provide flexibility for comfy wear and tear.



FLEX & MOVE MECHANICAL STRETCH SHIRT BS1133

- / Mechanical stretch fabric for extra comfort and movement
- / Contrast polyester patches to prevent wear and tear at highly abrasive areas
- / 3M 8710 Reflective cord piping along front and back shoulder yoke
- / Mitred chest pockets with touch tape closure
- / Left pocket with pen division and hidden phone pouch
- / Two piece structured collar
- / Antistatic carbon yarn in polyester patches for added static control

COLOURS (CODE)

Black (BBLK)
Khaki (BCDR)
Charcoal (BCCG)

SIZES

XS-6XL
Active Fit

FABRIC

100% Cotton (Mechanical Stretch) 145gsm
98% Polyester, 2% Carbon Oxford 180gsm



FLEX & MOVE MECHANICAL STRETCH SHIRT BS6133

- / Mechanical stretch fabric for extra comfort and movement
- / Contrast polyester patches to prevent wear and tear at highly abrasive areas
- / 3M 8710 Reflective cord piping along front and back shoulder yoke
- / Mitred chest pockets with touch tape closure
- / Left pocket with pen division and hidden phone pouch
- / Two piece structured collar
- / Contoured shape two piece sleeve
- / Antistatic carbon yarn in polyester patches for added static control
- / Two button adjustable sleeve cuff

COLOURS (CODE)

Black (BBLK)
Khaki (BCDR)
Charcoal (BCCG)

SIZES

XS-6XL
Active Fit

FABRIC

100% Cotton (Mechanical Stretch) 145gsm
98% Polyester, 2% Carbon Oxford 180gsm



FLEX & MOVE STRETCH PANT BPC6130

- / Contrast stretch canvas – front and back upper hip and back inner thigh
- / Curved waistband to prevent gaping at back
- / Front slant pockets
- / RHS leg utility pocket, with ruler, mobile phone, card and pen division
- / LHS welt cargo pocket
- / Twin back pockets with reinforced patches
- / Double layered shaped knee
- / Back shaped knee pane
- / Hem boot cuff
- / Seven reinforced wider and stronger belt loops with hanger loop on front RHS leg

COLOURS (CODE)

Black (BBLK)
Khaki (BCDR)
Charcoal (BCCG)

SIZES

72-112R, 87-132S
Active Fit

FABRIC

100% Cotton Canvas (Duck Weave) 265gsm
97% Cotton 3% Spandex (Stretch Canvas) 200gsm
98% Polyester, 2% Carbon Oxford 180gsm



FLEX & MOVE STRETCH SHORT BSHC1130

- / Contrast stretch canvas – front and back upper hip and back inner thigh
- / Curved waistband to prevent gaping at back
- / Front slant pockets
- / RHS leg utility pocket, with ruler, mobile phone, card and pen division
- / LHS welt cargo pocket
- / Twin back pockets with reinforced patches
- / Seven reinforced wider and stronger belt loops with hanger loop on front RHS leg

COLOURS (CODE)

Black (BBLK)
Khaki (BCDR)
Charcoal (BCCG)

SIZES

72-132
Active Fit

FABRIC

100% Cotton Canvas (Duck Weave) 265gsm
97% Cotton 3% Spandex (Stretch Canvas) 200gsm
98% Polyester, 2% Carbon Oxford 180gsm



Boot hem cut out cuff.

Reinforced contrast patches for high abrasive areas.

Stretch cotton canvas patches.

Mechanical stretch cotton.

Bisley
WORKWEAR
FLX & MOVE

3M Taped Two Tone Hi Vis
Industrial Cool Vent Shirt
BS6448T

3M Taped Industrial
Engineered Cargo Pant
BPC6021T

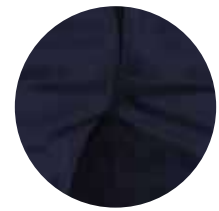


Underarm venting.

Twin chest patch pockets.



Back venting.



Diamond crotch gusset.

Utility pocket.



Cargo pocket with hidden
tool pocket entry.

Double layered contoured
knee patches.

Refer to page 77 & 78 for more features and colours.

75 INDUSTRIAL

Our industrial strength gear is
equipped with reinforced stitching,
bartacks, rivets and heavy duty fabrics.



3M Taped Two
Tone Hi Vis
Industrial Cool
Vent Shirt
BS6448T

3M Taped
Industrial
Engineered
Cargo Pant
BPC6021T



Bisley's premium Industrial range is designed to withstand industrial washes at 75°C.



3M TAPED HI VIS INDUSTRIAL COOL VENT SHIRT BS6445T

- / 3M 9920 Reflective taped hoop pattern around body
- / Twin chest pockets with flaps
- / Chevron tape detailing
- / Underarm and upper back cooling vents
- / Left pocket with pen division
- / Two piece sleeve with elbow dart

COLOURS (CODE)

Yellow (BBLY)
Orange (BVEO)

SIZES

S-6XL

FABRIC

100% Cotton Preshrunk Drill 190gsm
100% Cotton Open Mesh 200gsm



WOMENS 3M TAPED HI VIS INDUSTRIAL COOL VENT SHIRT BL6445T

- / 3M 9920 Reflective taped hoop pattern around body
- / Twin chest pockets with flaps
- / Chevron tape detailing
- / Underarm and upper back cooling vents
- / Left pocket with pen division
- / Two piece sleeve with elbow dart

COLOURS (CODE)

Yellow (BBLY)
Orange (BVEO)

SIZES

8-24

FABRIC

100% Cotton Preshrunk Drill 190gsm
100% Cotton Open Mesh 200gsm



3M TAPED TWO TONE HI VIS INDUSTRIAL COOL VENT SHIRT BS6448T

- / 3M 9920 Reflective taped hoop pattern around body
- / Twin chest pockets with flaps
- / Chevron tape detailing
- / Underarm and upper back cooling vents
- / Left pocket with pen division
- / Two piece sleeve with elbow dart
- / Spliced front only with full hi vis back

COLOURS (CODE)

Yellow/Navy (TT01)
Orange/Navy (TT02)

SIZES

S-6XL

FABRIC

100% Cotton Preshrunk Drill 190gsm
100% Cotton Open Mesh 200gsm



WOMENS 3M TAPED TWO TONE HI VIS INDUSTRIAL COOL VENT SHIRT BL6448T

- / 3M 9920 Reflective taped hoop pattern around body
- / Twin chest pockets with flaps
- / Chevron tape detailing
- / Underarm and upper back cooling vents
- / Left pocket with pen division
- / Two piece sleeve with elbow dart
- / Spliced front only with full hi vis back

COLOURS (CODE)

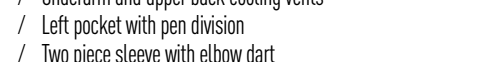
Yellow/Navy (TT01)
Orange/Navy (TT02)

SIZES

8-24

FABRIC

100% Cotton Preshrunk Drill 190gsm
100% Cotton Open Mesh 200gsm





- Twin back hip patch pockets.
- Hidden tool pocket entry.
- Contoured shape double layer knee patch.

INDUSTRIAL ENGINEERED CARGO PANT BPC6021

- / Engineered fit – contoured shaped leg and knee
- / Curved waistband to prevent gaping at back
- / Ten multifunctional pockets including hidden tool pockets
- / Mitred patch pockets
- / Double layer knee for protection against wear and tear
- / Diamond crotch gusset for extra comfort and to prevent crotch splitting

- / YKK zipper
- / Seven wider and stronger belt loops
- / Thicker and stronger top stitching thread

COLOURS (CODE)

Navy (BPCT)

SIZES

77–112R, 87–132S, 74-94L

FABRIC

100% Cotton Preshrunk Drill 310gsm



3M TAPED INDUSTRIAL ENGINEERED CARGO PANT BPC6021T

- / 3M 9920 Reflective tape around lower leg
- / Engineered fit – contoured shaped leg and knee
- / Curved waistband to prevent gaping at back
- / Ten multifunctional pockets including hidden tool pockets
- / Mitred patch pockets
- / Double layer knee for protection against wear and tear
- / Diamond crotch gusset for extra comfort and to prevent crotch splitting
- / YKK zipper
- / Seven wider and stronger belt loops
- / Thicker and stronger top stitching thread

COLOURS (CODE)

Navy (BPCT)

SIZES

77–112R, 87–132S, 74-94L

FABRIC

100% Cotton Preshrunk Drill 310gsm



WOMENS INDUSTRIAL ENGINEERED DRILL PANT BPL6021

- / Engineered fit - contoured shaped leg and knee
- / Curved waistband to prevent gaping at back
- / Four multifunctional pockets including cargo style welt pocket
- / Mitred patch pockets
- / Double layer knee for protection against wear and tear
- / YKK zipper
- / Seven wider and strong belt loops
- / Thicker and stronger top stitching thread

COLOURS (CODE)

Navy (BPCT)

SIZES

6–24

FABRIC

100% Cotton Preshrunk Drill 310gsm



WOMENS 3M TAPED INDUSTRIAL ENGINEERED DRILL PANT BPL6021T

- / 3M 9920 Reflective tape around lower leg
- / Engineered fit – contoured shaped leg and knee
- / Curved waistband to prevent gaping at back
- / Four multifunctional pockets including cargo style welt pocket
- / Mitred patch pockets
- / Double layer knee for protection against wear and tear
- / Seven wider and stronger belt loops

COLOURS (CODE)

Navy (BPCT)

SIZES

6–24

FABRIC

100% Cotton Preshrunk Drill 310gsm



INDUSTRIAL STRAIGHT LEG WORK DENIM JEAN BP6053

- / Modern lower waist straight leg fit
- / Garment washed for comfort
- / Classic five pocket styling with front angle-shaped access
- / Twin needle and triple needle top stitching for extra durability
- / YKK zipper

COLOURS (CODE)

Dark Denim (BDAD)

SIZES

77–112R, 92–132S, 74-94L

FABRIC

100% Cotton Denim 490gsm (14.5oz)



3M TAPED INDUSTRIAL STRAIGHT LEG WORK DENIM JEAN BP6053T

- / 3M 9920 Reflective tape around lower leg
- / Modern lower waist straight leg fit
- / Garment washed for comfort
- / Classic five pocket styling with front angle-shaped access
- / Twin needle and triple needle top stitching for extra durability
- / YKK zipper

COLOURS (CODE)

Dark Denim (BDAD)

SIZES

77–112R, 92–132S, 74-94L

FABRIC

100% Cotton Denim 490gsm (14.5oz)



WOMENS INDUSTRIAL BOOT LEG WORK DENIM JEAN BPL6053

- / Modern subtle boot leg fit
- / Garment washed for comfort
- / Classic five pocket styling with front angle-shaped access
- / Twin needle and triple needle top stitching for extra durability
- / YKK zipper

COLOURS (CODE)

Dark Denim (BDAD)

SIZES

8–24

FABRIC

100% Cotton Denim 490gsm (14.5oz)



WOMENS 3M TAPED INDUSTRIAL BOOT LEG WORK DENIM JEAN BPL6053T

- / 3M 9920 Reflective tape around lower leg
- / Modern subtle boot leg fit
- / Garment washed for comfort
- / Classic five pocket styling with front angle-shaped access
- / Twin needle and triple needle top stitching for extra durability
- / YKK zipper

COLOURS (CODE)

Dark Denim (BDAD)

SIZES

8–24

FABRIC

100% Cotton Denim 490gsm (14.5oz)





TenCate Tecasafe® Plus Taped
Two Tone Hi Vis FR Vented Shirt
BS8082T

TenCate Tecasafe® Plus FR Taped
Engineered Vented Cargo Pant
BPC8092T

Refer to page 82 & 84 for more features and colours.

TenCate Tecasafe®
Plus Taped Two Tone
Hi Vis FR Vented Shirt
BS8082T

TenCate Tecasafe®
Plus FR Taped
Engineered Vented
Cargo Pant
BPC8092T

Bisley WORKWEAR PROTECTIVE WEAR 81

Protect your greatest asset –
your workers – with Bisley
Protective wear's innovative
risk-resistant fabrics and features.





**TENCATE TECASAFE® PLUS
TAPED HI VIS FR VENTED SHIRT
BS8081T**

- / Sto-nor 9801 FR Reflective taped hoop pattern around body and sleeve
- / Two piece structured collar
- / Two way radio loop or gas monitor loop on both sides
- / Left pocket with pen division
- / Twin chest pockets with plastic press snap closure
- / Full gusset sleeve cuff with plastic press snap closure

- / Action back panel ventilation, with three openings and underarm ventilation

COLOURS (CODE)

Orange (BVEO)

SIZES

S-6XL

FABRIC

TenCate Tecasafe® Plus 700
FR Modacrylic Lyocell Aramid 238gsm
TenCate FR Mesh



**TENCATE TECASAFE® PLUS
TAPED HI VIS LIGHTWEIGHT
FR VENTED SHIRT
BS8097T**

- / Sto-nor 9801 FR Reflective taped hoop pattern around body and sleeve
- / Two piece structured collar
- / Two way radio loop or gas monitor loop on both sides
- / Left pocket with pen division
- / Twin chest pockets with plastic press snap closure

- / Full gusset sleeve cuff with plastic press snap closure
- / Action back panel ventilation, with three openings and underarm ventilation

COLOURS (CODE)

Orange (BVEO)

SIZES

S-6XL

FABRIC

TenCate Tecasafe® Plus 580
FR Modacrylic Lyocell Aramid 197gsm
TenCate FR Mesh



**TENCATE TECASAFE® PLUS TAPED
TWO TONE HI VIS FR VENTED SHIRT
BS8082T**

- / Sto-nor 9801 FR Reflective taped hoop pattern around body and sleeve
- / Two piece structured collar
- / Two way radio loop or gas monitor loop on both sides
- / Left pocket with pen division
- / Twin chest pockets with plastic press snap closure
- / Full gusset sleeve cuff with plastic press snap closure

- / Action back panel ventilation, with three openings and underarm ventilation

COLOURS (CODE)

Orange/Navy (TT02)
Yellow/Navy (TT01)

SIZES

S-6XL

FABRIC

TenCate Tecasafe® Plus 700
FR Modacrylic Lyocell Aramid 238gsm
TenCate FR Mesh



**TENCATE TECASAFE® PLUS TAPED
TWO TONE HI VIS LIGHTWEIGHT
FR VENTED SHIRT
BS8098T**

- / Sto-nor 9801 FR Reflective taped hoop pattern around body and sleeve
- / Two piece structured collar
- / Two way radio loop or gas monitor loop on both sides
- / Left pocket with pen division
- / Twin chest pockets with plastic press snap closure
- / Full gusset sleeve cuff with plastic press snap closure

- / Action back panel ventilation, with three openings and underarm ventilation

COLOURS (CODE)

Orange/Navy (TT02)
Yellow/Navy (TT01)

SIZES

S-6XL

FABRIC

TenCate Tecasafe® Plus 580
FR Modacrylic Lyocell Aramid 197gsm
TenCate FR Mesh



**TENCATE TECASAFE® PLUS TAPED
HI VIS FR NON VENTED SHIRT
BS8197T**

- / Sto-nor 9801 FR Reflective taped hoop pattern around body and sleeve
- / Two piece structured collar
- / Two way radio loop or gas monitor loop on both sides
- / Left pocket with pen division
- / Twin chest pockets with plastic press snap closure

- / Full gusset sleeve cuff with plastic press snap closure
- / Concealed press snap closure

COLOURS (CODE)

Orange (BVEO)

SIZES

S-6XL

FABRIC

TenCate Tecasafe® Plus 580
FR Modacrylic Lyocell Aramid 197gsm



**WOMENS TENCATE TECASAFE®
PLUS TAPED TWO TONE HI VIS FR
VENTED SHIRT
BL8082T**

- / Sto-nor 9801 FR Reflective taped hoop pattern around body and sleeve
- / Two piece structured collar
- / Two way radio loop or gas monitor loop on both sides
- / Left pocket with pen division
- / Twin chest pockets with plastic press snap closure
- / Full gusset sleeve cuff with plastic press snap closure

- / Action back panel ventilation, with three openings and underarm ventilation
- / Concealed press snap closure

COLOURS (CODE)

Orange/Navy (TT02)
Yellow/Navy (TT01)

SIZES

8-24

FABRIC

TenCate Tecasafe® Plus 700
FR Modacrylic Lyocell Aramid 238gsm
TenCate FR Mesh



**TENCATE TECASAFE® PLUS
TAPED TWO TONE HI VIS FR
NON VENTED SHIRT
BS8198T**

- / Sto-nor 9801 FR Reflective taped hoop pattern around body and sleeve
- / Two piece structured collar
- / Two way radio loop or gas monitor loop on both sides
- / Left pocket with pen division
- / Twin chest pockets with plastic press snap closure

- / Full gusset sleeve cuff with plastic press snap closure
- / Concealed press snap closure

COLOURS (CODE)

Orange/Navy (TT02)
Yellow/Navy (TT01)

SIZES

S-6XL

FABRIC

TenCate Tecasafe® Plus 580
FR Modacrylic Lyocell Aramid 197gsm



**WOMENS TENCATE TECASAFE®
PLUS TAPED TWO TONE HI VIS
LIGHTWEIGHT FR VENTED SHIRT
BL8098T**

- / Sto-nor 9801 FR Reflective taped hoop pattern around body and sleeve
- / Two piece structured collar
- / Two way radio loop or gas monitor loop on both sides
- / Left pocket with pen division
- / Twin chest pockets with plastic press snap closure
- / Full gusset sleeve cuff with plastic press snap closure

- / Action back panel ventilation, with three openings and underarm ventilation
- / Concealed press snap closure

COLOURS (CODE)

Orange/Navy (TT02)
Yellow/Navy (TT01)

SIZES

8-24

FABRIC

TenCate Tecasafe® Plus 580
FR Modacrylic Lyocell Aramid 197gsm
TenCate FR Mesh





TENCATE TECASAFE® PLUS ENGINEERED FR VENTED CARGO PANT BPC8092

- / Curved waistband to prevent gaping at back
- / Front angled pockets
- / YKK zipper
- / LHS cargo pockets covered with flap and hidden ruler pocket
- / Front knee darts with contoured back knee seam line
- / Back yoke ventilation
- / Double back hip welt pocket covered with flap
- / Mobile phone welt pocket
- / Diamond shape crotch gusset

COLOURS (CODE)

Navy (BPCT)

SIZES

77-112R, 87-132S

FABRIC

TenCate Tecasafe® Plus 700
FR Modacrylic Lyocell Aramid 238gsm
TenCate FR Mesh



TENCATE TECASAFE® PLUS TAPED ENGINEERED FR VENTED CARGO PANT BPC8092T

- / Sto-nor 9801 FR Reflective tape around lower leg
- / Curved waistband to prevent gaping at back
- / Front angled pockets
- / YKK zipper
- / LHS cargo pockets covered with flap and hidden ruler pocket
- / Front knee darts with contoured back knee seam line
- / Back yoke ventilation
- / Double back hip welt pocket covered with flap
- / Mobile phone welt pocket
- / Diamond shape crotch gusset

COLOURS (CODE)

Navy (BPCT)

SIZES

77-112R, 87-132S

FABRIC

TenCate Tecasafe® Plus 700
FR Modacrylic Lyocell Aramid 238gsm
TenCate FR Mesh



TENCATE TECASAFE® PLUS TAPED ENGINEERED FR PANT BP8090T

- / Sto-nor 9801 FR Reflective tape around upper leg
- / Angled front pockets
- / YKK zipper
- / Wider and stronger belt loops
- / Twin needle seam stitching in FR thread
- / Single back patch pocket

COLOURS (CODE)

Navy (BPCT)

SIZES

77-112R, 87-132S

FABRIC

TenCate Tecasafe® Plus 700
FR Modacrylic Lyocell Aramid 238gsm



WOMENS TENCATE TECASAFE® PLUS TAPED FR ENGINEERED CARGO PANT BPL8092T

- / Sto-nor 9801 FR Reflective tape around upper leg
- / Curved waistband to prevent gaping at back
- / Front angled pockets
- / YKK zipper
- / LHS cargo pockets
- / Back yoke ventilation
- / Double back hip welt pocket covered with flap
- / Mobile phone welt pocket
- / Back hip welt pockets with touch tape

COLOURS (CODE)

Navy (BPCT)

SIZES

6-24

FABRIC

TenCate Tecasafe® Plus 700
FR Modacrylic Lyocell Aramid 238gsm



Stand collar.

Action back panel ventilation.

Diamond shaped crotch gusset.



TENCATE TECASAFE® PLUS TAPED HI VIS ENGINEERED FR VENTED COVERALL BC8085T

- / Sto-nor 9801 FR Reflective taped hoop pattern around body and sleeve and lower leg
- / Stand collar
- / Two way radio loop or gas monitor loop on both sides
- / Covered plastic press snap front closure
- / Front angled pockets
- / Front knee darts and contoured back knee seam line
- / Full gusset sleeve cuff with plastic press snap closure
- / Underarm and action back panel ventilation, three openings
- / Diamond shape crotch gusset
- / Ten multifunctional pockets

COLOURS (CODE)

Orange (BVE0)

SIZES

77-117R, 92-132S

FABRIC

TenCate Tecasafe® Plus 700
FR Modacrylic Lyocell Aramid 238gsm
TenCate FR Mesh



TENCATE TECASAFE® PLUS TAPED TWO TONE HI VIS ENGINEERED FR VENTED COVERALL BC8086T

- / Sto-nor 9801 FR Reflective taped hoop pattern around body and sleeve and lower leg
- / Stand collar
- / Two way radio loop or gas monitor loop on both sides
- / Covered plastic press snap front closure
- / Front angled pockets
- / Front knee darts and contoured back knee seam line
- / Full gusset sleeve cuff with plastic press snap closure
- / Underarm and action back panel ventilation, 3 openings
- / Diamond shape crotch gusset
- / Ten multifunctional pockets

COLOURS (CODE)

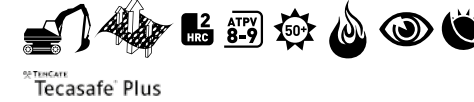
Orange/Navy (TT02)

SIZES

77-117R, 92-132S

FABRIC

TenCate Tecasafe® Plus 700
FR Modacrylic Lyocell Aramid 238gsm
TenCate FR Mesh



TENCATE TECASAFE® PLUS TAPED HI VIS LIGHTWEIGHT FR NON VENTED ENGINEERED COVERALL BC8185T

- / Sto-nor 9801 FR Reflective taped hoop pattern around body and sleeve and lower leg
- / Stand collar
- / Two way radio loop or gas monitor loop on both sides
- / Covered plastic press snap front closure
- / Front angled pockets
- / Front knee darts and contoured back knee seam line
- / Full gusset sleeve cuff with plastic press snap closure
- / Diamond shape crotch gusset
- / Ten multifunctional pockets

COLOURS (CODE)

Orange (BVE0)

SIZES

77-117R, 92 -132S

FABRIC

TenCate Tecasafe® Plus 580
FR Modacrylic Lyocell Aramid 197 gsm



TENCATE TECASAFE® PLUS TAPED TWO TONE HI VIS LIGHTWEIGHT FR NON VENTED ENGINEERED COVERALL BC8186T

- / Sto-nor 9801 FR Reflective taped hoop pattern around body and sleeve and lower leg
- / Stand collar
- / Two way radio loop or gas monitor loop on both sides
- / Covered plastic press snap front closure
- / Front angled pockets
- / Front knee darts and contoured back knee seam line
- / Full gusset sleeve cuff with plastic press snap closure
- / Diamond shape crotch gusset
- / Ten multifunctional pockets

COLOURS (CODE)

Orange/Navy (TT02)

SIZES

77-117R, 92 -132S

FABRIC

TenCate Tecasafe® Plus 580
FR Modacrylic Lyocell Aramid 197gsm



Bisley's stock service **Flame Resistant range** provides the wearer with premium protection from OHS hazards such as Arc Flash and Flash Fire found in high risk work environments. Bisley can provide an inherent garment to meet the specific risk environment the worker will face.

FR GARMENTS FOR ELECTRICAL ARC HAZARD PROTECTION

At the time of printing, information was circulating regarding pending amendments to National Guideline for the Selection, Use and Maintenance of Personal Protective Equipment for Electrical Arc Hazards (ENA NENS 09-2014) however these pending amendments were still in draft form.

Below is a summary of Bisley's interpretation of the amended draft National Guideline. The products, opposite, have been designed to meet the current draft.

Bisley will continue to monitor the proposed amendments to the draft National Guidelines. When it is finalised, we will update our range, if necessary, to meet the new standards.

If you have any questions, or require further information regarding the pending amendments to the National Guidelines, please contact your Bisley Sales Representative.

ENA NENS 09-2014

National Guideline for the Selection, Use and Maintenance of Personal Protective Equipment for Electrical Arc Hazards

ENA NENS 09-2014 is a national guideline for the selection, use and maintenance of personal protective equipment for electrical arc hazards. It is not an Australian standard requiring full compliance.

The guideline sets the minimum criteria for the selection, use and maintenance of Personal Protective Equipment (PPE) used to protect workers and others against the electrical arc hazards within the Electricity Supply Industry.

This guideline covers the clothing and apparel designs, the minimum performance levels of the materials used, and the methods of testing to determine the performance levels.

BASE GARMENTS RECOMMENDATION

Base garments may be in the form of the following:

- Long sleeve shirts
- Trousers
- Coveralls/Overalls

The recommended minimum ATPV for base garments is 16.7J/cm² (4cal/cm²) = HRC1

GARMENT DESIGN RECOMMENDATION

Shirt Front Opening

For shirts used in environments having electric arc hazards, it is recommended that they be manufactured with a 'closed front'. Where buttons are used on shirt openings, they should be covered by a placket of the shirt material (known as a fly front design).

Coverall Front Opening

The coverall should be manufactured with continuous, full length, front closure eg. zipper. Press studs or buttons are not recommended as front closure mechanisms.

Sleeve Cuffs

Must include a full gusset at sleeve cuff.

Vents

If vents are incorporated into the base garments, the vent mesh material should be flame resistant. The fabric and design of the vents should ensure that the garments' arc protective properties are not compromised.



TENCATE TECASAFE® PLUS TAPED TWO TONE HI VIS FR CLOSED FRONT SHIRT WITH CONCEALED FRONT PLACKET BSC8075T

- / Sto-nor 9801 FR Reflective taped hoop pattern around body and sleeve
- / Closed front with concealed front placket and button closure
- / Two piece structured collar
- / Two way radio loop or gas monitor loop on both sides
- / Left pocket with pen division
- / Twin chest pockets with plastic press snap closure

- / Full gusset sleeve cuff with plastic press snap closure
- / Action back panel ventilation, with three openings and underarm ventilation

COLOURS (CODE)

Yellow/Navy (TT01)
Orange/Navy (TT02)

SIZES

S-6XL

FABRIC

TenCate Tecasafe® Plus 580
FR Modacrylic Lyocell Aramid 197gsm
TenCate FR Mesh



WOMENS TENCATE TECASAFE® PLUS TAPED TWO TONE HI VIS FR CLOSED FRONT SHIRT WITH CONCEALED FRONT PLACKET BLC8075T

- / Sto-nor 9801 FR Reflective taped hoop pattern around body and sleeve
- / Closed front with concealed front placket and button closure
- / Two piece structured collar
- / Two way radio loop or gas monitor loop on both sides
- / Left pocket with pen division
- / Twin chest pockets with plastic press snap closure

- / Full gusset sleeve cuff with plastic press snap closure
- / Action back panel ventilation, with three openings and underarm ventilation

COLOURS (CODE)

Yellow/Navy (TT01)
Orange/Navy (TT02)

SIZES

6-24

FABRIC

TenCate Tecasafe® Plus 580
FR Modacrylic Lyocell Aramid 197gsm
TenCate FR Mesh



TENCATE TECASAFE® PLUS TAPED HI VIS LIGHTWEIGHT FR NON VENTED ENGINEERED COVERALL WITH ZIP CLOSURE BC8178T

- / Sto-nor 9801 FR Reflective taped hoop pattern around body and sleeve and lower leg
- / Stand collar
- / Two way radio loop or gas monitor loop on both sides
- / Concealed centre front nylon zip closure
- / Front angled pockets
- / Front knee darts and contoured back knee seam line
- / Full gusset sleeve cuff with plastic press snap closure
- / Diamond shape crotch gusset
- / Pockets with FR nylon zip opening

COLOURS (CODE)

Orange (BVE0)

SIZES

77-117R, 92-132S

FABRIC

TenCate Tecasafe® Plus 580
FR Modacrylic Lyocell Aramid 197gsm



TENCATE TECASAFE® PLUS TAPED TWO TONE HI VIS LIGHTWEIGHT FR NON VENTED ENGINEERED COVERALL WITH ZIP CLOSURE BC8177T

- / Sto-nor 9801 FR Reflective taped hoop pattern around body and sleeve and lower leg
- / Stand collar
- / Two way radio loop or gas monitor loop on both sides
- / Concealed centre front nylon zip closure
- / Front angled pockets
- / Front knee darts and contoured back knee seam line
- / Full gusset sleeve cuff with plastic press snap closure
- / Diamond shape crotch gusset
- / Pockets with FR nylon zip opening

COLOURS (CODE)

Orange/Navy (TT02)

SIZES

77-117R, 92-132S

FABRIC

TenCate Tecasafe® Plus 580
FR Modacrylic Lyocell Aramid 197gsm



MADE TO ORDER

Bisley provides a large range of FR solutions that are stock supported in our warehouse and we are equally capable of providing custom made solutions for your business through our close working relationship with TenCate.

Bisley Workwear's design services can work with you from concept through to an innovative and professionally delivered product solution with all products made to the highest quality and designed to meet all relevant standards. Bisley is committed to providing a comprehensive end-to-end product solution with a focus on meeting cost targets and delivering on time.

These solutions range from providing specially made garments of any of the basic Tecasafe® fabric colours available through TenCate, in both the HRC 1 Tecasafe® 580 fabric and the HRC 2 Tecasafe® 700 fabric through to completely customised colours^ and designs. Depending on the design of the garment and the colour and weight of the fabric, minimum quantities can be as low as 300 units and lead times as quick as six weeks for production plus transit time*.

For personalised garments, Bisley can also provide a comprehensive range of solutions from embroidery using FR threads to heat transfer logos that are also fire resistant.



FR HEAT TRANSFER

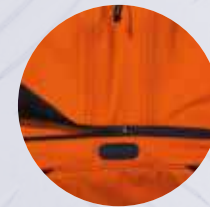
- FR transfers are flame retardant, durable transfers with FR certification
- Certified to EN ISO 11612:2008 after washing at EN ISO 15797:2002 and testing to EN ISO 15025:2000
- Ideal for use on FR garments as they will not compromise the FR qualities of the garment
- Heavy duty and very hard wearing, able to withstand the rigours of laundering and dry cleaning
- Suitable to use on all FR fabrics (eg. Tecasafe PLUS®, Westex Ultrasoft®)
- Logos can be developed to match your corporate colours



FR EMBROIDERY

- FR embroidery is flame and heat resistant and uses Madeira brand "Fire Fighter" embroidery thread
- Fire Fighter is made from 100% aramid thread and contains Nomex branded fibers from Du Pont
- Certified to Oeko Tex 100 and complies with ISO standards ISO-6941/ISO 15025
- For use in all sectors with specific safety requirements (eg. Aeronautics, Fire Brigade)
- 24 colour options offered in Madeira embroidery

WATERPROOF, ANTISTATIC FR PROTECTION



Detachable contoured shaped zip off hood.



Two way radio loop or gas monitor loop on both sides.



Action back for extra movement and comfort.



Twin chest patch pockets with extended front yoke flap.

Adjustable sleeve cuff with internal inner sleeve cuff rib.

Waist seam welt pockets with flap and touch tape closure.



TAPED TWO TONE HI VIS FR JACKET BJ8100T

Sto-nor 9801 FR Reflective taped hoop pattern around body and sleeve.

FABRIC

- / Hazard Risk Category HRC 3
- / MO-A280
- / Arc Thermal Protection Value ATPV 36
- / 55% FR Modacrylic, 44% Cotton, 1% Anti-static
- / 280 gsm

FEATURES

- / Sto-nor 9801 FR Reflective taped hoop pattern
- / Fully lined in cotton FR lining
- / Fully seam sealed for wet weather protection
- / Detachable zip off hood
- / Twin chest patch pocket with extended front yoke flap and touch tape closure
- / Twin waist pockets with flap and touch tape closure
- / Storm flap at centre front
- / Two way radio loop or gas monitor loop on both sides
- / Internal rib sleeve cuff
- / Adjustable sleeve tab with touch tape closure
- / Antistatic carbon yarn

^ Whilst custom Tecasafe® colours can be developed upon request they do have higher minimums and longer lead times, but regardless of your needs contact your Bisley Sales Representative to arrange a meeting to discuss your needs.

* Transit time will depend on air-freight vs sea freight cost options provided at the time of quoting.



WESTEX ULTRASOFT® 3M TAPED TWO TONE HI VIS FR SHIRT BS8002

- / 3M 8935 FR Reflective taped hoop pattern around body
- / Half placket
- / Full gusset sleeve cuff
- / Two squared chest pockets with button down flaps
- / Left pocket with pen division
- / Two piece contrast coloured structured collar

COLOURS (CODE)

Yellow/Navy (TT04)
Orange/Navy (TT05)

SIZES

S-6XL

FABRIC

Westex UltraSoft® Flame Resistant Fabric (301)
88% Cotton, 12% High Tenacity Nylon
237gsm



WESTEX ULTRASOFT® 3M TAPED HI VIS FR SHIRT BS8004

- / 3M 8935 FR Reflective taped hoop pattern around body
- / Full gusset sleeve cuff
- / Two rounded chest pockets with button down flaps
- / Left pocket with pen division
- / Two piece structured collar

COLOURS (CODE)

Orange (BVE0)

SIZES

S-6XL

FABRIC

Westex UltraSoft® Flame Resistant Fabric (341)
88% Cotton, 12% High Tenacity Nylon
186gsm



Covered plastic press snap closure.



WESTEX ULTRASOFT® 3M TAPED HI VIS FR COVERALL BC8001

- / 3M 8935 FR Reflective taped hoop pattern around body
- / Concealed front press snap closure
- / Front right chest pocket with zippered opening
- / Left front chest patch pocket with tool/ knife division
- / Angled side pockets and side openings to body
- / Back utility patch pocket and ruler/ phone pocket

COLOURS (CODE)

Orange (BVE0)

SIZES

77-112R , 87-132S, 74-94L

FABRIC

Westex UltraSoft® Flame Resistant Fabric (301)
88% Cotton, 12% High Tenacity Nylon 237gsm



WESTEX ULTRASOFT® 3M TAPED HI VIS TWO TONE FR COVERALL BC8001

- / 3M 8935 FR Reflective taped hoop pattern around body
- / Concealed front press snap closure
- / Front right chest pocket with zippered opening
- / Left front chest patch pocket with tool/ knife division
- / Angled side pockets and side openings to body
- / Back utility patch pocket and ruler/ phone pocket

COLOURS (CODE)

Orange/Navy (TT05)

SIZES

77-112R , 87-132S, 74-94L

FABRIC

Westex UltraSoft® Flame Resistant Fabric (301)
88% Cotton, 12% High Tenacity Nylon 237gsm



TAPED TWO TONE HI VIS FR JACKET BJ8100T

- / Sto-nor 9801 FR Reflective taped hoop pattern
- / Fully lined in cotton FR lining
- / Fully seam sealed for wet weather protection
- / Detachable zip off hood
- / Twin chest patch pocket with extended front yoke flap and touch tape closure
- / Twin waist pockets with flap and touch tape closure
- / Storm flap at centre front
- / Two way radio loop or gas monitor loop on both sides
- / Internal rib sleeve cuff
- / Adjustable sleeve tab with touch tape closure
- / Antistatic carbon yarn

COLOURS (CODE)

Orange/Navy (TT02)
Yellow/Navy (TT01)

SIZES

S-6XL

FABRIC

55% Modacrylic, 44% Cotton, 1% Antistatic 280gsm



WESTEX ULTRASOFT® FR WORK PANT BP8010

- / Mobile phone pocket on right side
- / Seven reinforced belt loops
- / Single front pleats
- / Back patch pockets
- / Coin pocket in waistband
- / YKK zipper

COLOURS (CODE)

Navy (BPCT)

SIZES

77-112R , 87-132S, 74-94L

FABRIC

Westex UltraSoft® Flame Resistant Fabric (301)
88% Cotton, 12% High Tenacity Nylon 237gsm



WESTEX ULTRASOFT® 3M TAPED FR WORK PANT BP8000

- / 3M 8935 FR Reflective tape around lower legs
- / Mobile phone pocket on right side
- / Seven reinforced belt loops
- / Single front pleats
- / Back patch pockets
- / Coin pocket in waistband
- / YKK zipper

COLOURS (CODE)

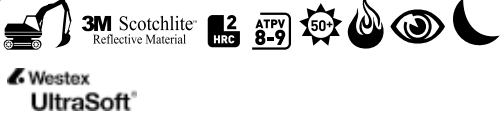
Navy (BPCT)

SIZES

77-112R , 87-132S, 74-94L

FABRIC

Westex UltraSoft® Flame Resistant Fabric (301)
88% Cotton, 12% High Tenacity Nylon 237gsm



INSECT PROTECTION



**INSECT PROTECTION ORIGINAL
DRILL WORK PANT
VRP6007**

- / Permethrin unique treatment that stays effective for up to 100 washes
- / Mobile phone pocket on right side
- / Seven reinforced belt loops
- / Single front pleats
- / Back patch pockets and coin pocket in waistband
- / YKK zipper

COLOURS (CODE)

Navy (BPCT)
Khaki (BCDR)

SIZES

77-112R

FABRIC

100% Cotton Preshrunk Drill 310gsm



**INSECT PROTECTION COOL
LIGHTWEIGHT UTILITY PANT
VRP6999**

- / Permethrin unique treatment that stays effective for up to 100 washes
- / Side angled pockets with right internal pocket
- / YKK zipper
- / Utility open pocket with touch tape closure
- / Cargo pocket with gusset touch tape closure
- / Eyelet ventilation between legs
- / Double layered knee for extra strength

COLOURS (CODE)

Khaki (BCDR)

SIZES

77-112R

FABRIC

100% Cotton Preshrunk Drill 240gsm



**INSECT PROTECTION
ANTI BACTERIAL SOCKS
VRSX7205**

- / Permethrin unique treatment that stays effective for up to 100 washes
- / Extra heel stress-point support
- / Reinforced toe
- / Increased durability for industrial environments
- / Antibacterial treatment reduces the risk of fungi and odour



Innovation and product development is key to the success of **Bisley Insect Protection** and pushes the boundaries of what's currently achievable by offering 100 wash protection in clothing and accessories. We work with major organisations and world recognised universities for testing of local insect species, ensuring our protection is the most suitable for your climate.

COLOURS (CODE)

Black (BBLK)
Navy (BPCT)

SIZES

6-10 and 11-13

FABRIC

80% Cotton, 17% Polyamide,
3% Elastane Knitted Jersey 220gsm



**INSECT PROTECTION TWO TONE
HI VIS SHIRT
VRS6267**

- / Permethrin unique treatment that stays effective for up to 100 washes
- / Two chest pockets with button down flaps
- / Left pocket with pen division
- / Two piece contrast coloured structured collar
- / Two button adjustable sleeve cuff



**INSECT PROTECTION
CHAMBRAY SHIRT
VRS76407**

- / Permethrin unique treatment that stays effective for up to 100 washes
- / Two chest pockets with buttoned openings
- / Left chest pocket with pen division
- / Centre back box pleat with locker loop
- / Two piece structured collar with button down points
- / Two button adjustable sleeve cuff



COLOURS (CODE)

Orange/Navy (TT02)

SIZES

S-6XL

FABRIC

100% Cotton Preshrunk Drill 190gsm



**INSECT PROTECTION TWO TONE
COOL LIGHTWEIGHT VENTED
DRILL SHIRT
VRS6895**

- / Permethrin unique treatment that stays effective for up to 100 washes
- / Two chest pockets with buttoned openings
- / Left chest pocket with pen division
- / Two piece contrast coloured structured collar
- / Full gusset cuff
- / Vertical back vents and underarm vents



**INSECT PROTECTION
FISHING SHIRT
VRS6140**

- / Permethrin unique treatment that stays effective for up to 100 washes
- / Large, internal, vented upper back area
- / Two pleated chest pockets with touch tape flaps
- / Pen holder on both pockets
- / Sunglasses hook near centre left pocket
- / Roll-up sleeve tabs with buttons
- / Two piece structured collar



COLOURS (CODE)

Orange/Navy (TT02)

SIZES

S-6XL

FABRIC

100% Cotton Preshrunk Drill 155gsm
100% Cotton Open Mesh 200gsm

COLOURS (CODE)

Light Blue (BBLB)
Stone (BSAN)

SIZES

S-6XL

FABRIC

100% Cotton Preshrunk Drill 155gsm
100% Polyester Mesh Ventilation



Taped Two Tone
Hi Vis Rain Shell
Jacket
BJ6966T

Refer to page 97 for more features and colours.

Taped Two Tone
Hi Vis Rain
Shell Jacket
BJ6966T

Taped Two Tone
Hi Vis Shell
Rain Pant
BP6965T

Bisley WORKWEAR WINTER

95

You need serious warmth
in extreme conditions –
that means Bisley's
premium fleeces and quilted,
weatherproof insulated
jackets. Our winter wear is
anything but fluffy.





TAPED TWO TONE 5 IN 1 RAIN JACKET BK6975

- / Reflective taped H pattern around body
- / Fully waterproof outer shell, stitched and seam sealed
- / Zip-out reversible padded body warmer
- / Detachable, zip-out sleeves
- / Chin guard for increased comfort
- / Heavy-duty two way zippered front opening
- / Internal and external embroidery access
- / Two hip pockets with hand warmers
- / External mobile phone pocket
- / Two inner slant hip pockets
- / Internal mobile phone pocket
- / Three pen holder on sleeve
- / ID card holder on inside and outside of jacket
- / Elasticated sleeve storm cuffs with fastening

COLOURS (CODE)
Yellow/Navy (TT04)
Orange/Navy (BT05)

SIZES
S-6XL

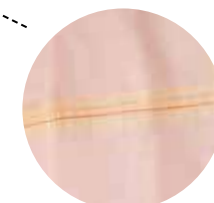
FABRIC
100% PU Coated Polyester 300D
(Non Breathable)
100% Polyester Fleece Lining
100% Polyester Mesh Liner



Tuck away hood.



Internal mobile phone pocket.



Waterproof seam seals.



Two button adjustable sleeve cuff.

RAIN JACKET



RAIN VEST



FLEECE JACKET



FLEECE VEST



Bisley Workwear's wet weather garments have been designed to keep you dry and comfortable and protect you from the elements while at work.

Bisley's 300 Denier polyester oxford fabric with PU coating has performed extremely well under Australian wet weather fabric tests.

Our fabric has achieved great results for water repellency – under spray test (AS 2001.1.16) achieving above 80 (highest level is 100), and water resistance – hydrostatic test method (AS 2001.2.17) with results of up to 20,000mm (200Kpa/H2O).

We also test our wet weather fabric under International standards.

European standard EN 343:2003 – Protection against rain, with results exceeding Class 3 which is the highest standard.

American standard for Water Vapour Penetration (ASTM E96/E96M:2010) achieving a result of over 3,750 grams/m²/24hrs.

All Bisley Workwear wet weather garments are 100% seam sealed to ensure your continued protection from water penetration whilst at work.



TAPED TWO TONE HI VIS RAIN SHELL JACKET BJ6966T

- / Reflective taped H pattern around body with extra hem tape
- / Waterproof fabric with breathability
- / All seams are seam sealed
- / Storm flap with touch tape and zip closure
- / Adjustable 1/2 elasticated cuff with touch tape tab closure
- / Secured and hideaway hood with high collar stand and shaped centre for weather protection

COLOURS (CODE)
Yellow/Navy (TT04)
Orange/Navy (TT05)

SIZES
XS-6XL

FABRIC
300D Oxford Polyester, PU Coated
(Breathable)
100% Polyester Mesh Lining



TAPED SHELL JACKET WITH X BACK BJ6968T

- / Reflective taped H pattern around body with X back for NSW Rail compliancy
- / Waterproof fabric with breathability
- / All seams are seam sealed
- / Storm flap with touch tape and zip closure
- / Adjustable 1/2 elasticated cuff with touch tape tab closure
- / Secured and hideaway hood with high collar stand and shaped centre for weather protection

COLOURS (CODE)
Orange (BVE0)

SIZES
XS-6XL

FABRIC
300D Oxford Polyester, PU Coated
(Breathable)
100% Polyester Mesh Lining



TAPED HI VIS RAIN SHELL JACKET BJ6967T

- / Reflective taped H pattern around body with extra hem tape
- / Waterproof fabric with breathability
- / All seams are seam sealed
- / Storm flap with touch tape and zip closure
- / Adjustable 1/2 elasticated cuff with touch tape tab closure
- / Secured and hideaway hood with high collar stand and shaped centre for weather protection

COLOURS (CODE)
Orange (BVE0)

SIZES
XS-6XL

FABRIC
300D Oxford Polyester, PU Coated
(Breathable)
100% Polyester Mesh Lining



TAPED TWO TONE HI VIS SHELL RAIN PANT BP6965T

- / Reflective tape around lower leg
- / Waterproof fabric with breathability
- / All seams are seam sealed
- / Full elasticated waistband
- / Lower leg in contrast colour for dirt protection
- / Adjustable press snap hem opening

COLOURS (CODE)
Yellow/Navy (TT04)
Orange/Navy (TT05)

SIZES
XS-6XL

FABRIC
300D Oxford Polyester, PU Coated
(Breathable)





**3M TAPED HI VIS 3 IN 1 DRILL JACKET
BJ6970T**

- / 3M Reflective taped H pattern around body
- / Three in one style – Jacket and Vest, Jacket only or Vest only
- / Detachable taped hi vis vest in H tape configuration
- / Cotton quilted lining with insulated padding
- / YKK zipper
- / Angled side seam pockets for both jacket and vest
- / LHS internal pocket

COLOURS (CODE)

Yellow/Navy (TT01)
Orange/Navy (TT02)

SIZES

S–6XL

FABRIC

100% Cotton Preshrunk Drill 310gsm
100% Cotton Lining with Polyester Wadding



DETACHABLE LINED VEST



**DRILL JACKET
BK6709**

- / Cotton quilted lining with polyester wadding
- / YKK zipper
- / Two angled side welt pockets
- / Internal zip pocket on the left side
- / Internal phone pocket on the right side with touch tape
- / Partial elasticated sleeve cuff

COLOURS (CODE)

Navy (BPCT)

SIZES

S–6XL

FABRIC

100% Cotton Preshrunk Drill 310gsm
100% Cotton Lining with Polyester Wadding



**TWO TONE HI VIS DRILL JACKET
BK6710**

- / Cotton quilted lining with insulated polyester wadding
- / YKK zipper
- / Two angled side welt pockets
- / Internal zip pocket on the left side
- / Internal phone pocket on the right side with touch tape
- / Partial elasticated sleeve cuff



COLOURS (CODE)

Orange/Navy (TT02)
Yellow/Navy (TT01)

SIZES

S–6XL

FABRIC

100% Cotton Preshrunk Drill 310gsm
100% Cotton Lining with Polyester Wadding



**3M TAPED TWO TONE HI VIS
DRILL JACKET
BK6710T**

- / 3M 8910 Reflective hoop pattern around body
- / Cotton quilted lining with insulated polyester wadding
- / YKK zipper
- / Two angled side welt pockets
- / Internal zip pocket on the left side
- / Internal phone pocket on the right side with touch tape
- / Partial elasticated sleeve cuff



COLOURS (CODE)

Orange/Navy (TT02)
Yellow/Navy (TT01)
Yellow/Bottle (TT03)

SIZES

S –6XL

FABRIC

100% Cotton Preshrunk Drill 310gsm
100% Cotton Lining with Polyester Wadding



SOFT SHELL JACKET
BJ6060

- / Water resistant fabric with breathable membrane
- / Bonded internal fleece face
- / Zippered pockets with waterproof zipper
- / Elasticated draw cord at hem
- / Reflective piping along front chest and back
- / Eyelet ventilation under both sleeves
- / Sleeve cuff adjusters reduces water entering over wrist

COLOURS (CODE)
Black (BBLK)
Navy (BPCT)

SIZES
XS-6XL

FABRIC
94% Polyester, 6% Spandex 310gsm
Soft Shell with Brushed Fleece
Bonded Lining
100% Polyester Mesh Lining

SOFT SHELL VEST
BV0360

- / Water resistant fabric with breathable membrane
- / Bonded internal fleece face
- / Inverted waterproof zipper at opening
- / Zip waist pocket with waterproof zipper
- / Elasticated draw cord at hem
- / Reflective piping along front chest
- / Chin guard zip stopper

COLOURS (CODE)
Black (BBLK)

SIZES
XS-6XL

FABRIC
94% Polyester, 6% Spandex 310gsm
Soft Shell with Brushed Fleece
Bonded Lining
100% Polyester Mesh Lining



Elasticated draw cord at hem.



TAPED SOFT SHELL JACKET
BJ6059T

- / Reflective taped hoop pattern around body
- / Water resistant fabric with breathable membrane
- / Bonded internal fleece face
- / Zippered pockets with waterproof zipper
- / Elasticated draw cord at hem
- / Reflective piping along front chest and back
- / Eyelet ventilation under arms
- / Sleeve cuff adjusters reduces water entering over wrist

COLOURS (CODE)
Yellow/Navy (TT01)
Orange/Navy (TT02)

SIZES
XS-6XL

FABRIC
94% Polyester, 6% Elastane 310gsm
Soft Shell with Brushed Fleece
Bonded Lining
100% Polyester Mesh Lining

TAPED HI VIS SOFT SHELL VEST
BV0348T

- / Reflective taped hoop pattern around body with over the shoulder tape
- / Water resistant fabric with breathable membrane
- / Bonded internal fleece face
- / Waterproof zip vest opening
- / Waist pockets with zipper closure
- / Elasticated draw cord at hem
- / Chin guard zip stopper

COLOURS (CODE)
Orange/Navy (TT05)
Yellow/Navy (TT04)

SIZES
XS-6XL

FABRIC
94% Polyester, 6% Spandex 310gsm
Soft Shell with Brushed Fleece Bonded Lining
100% Polyester Mesh Lining



HI VIS FLEECE HOODIE
BK6819

- / Premium polyester low pill fleece
- / Shaped hood with contrast internal lining
- / Internal rib collar for extra comfort
- / Full open front zip for easier accessibility
- / Front contrast kangaroo style shaped pockets
- / Rib cuffs with thumb opening

COLOURS (CODE)
Orange/Navy (TT05)
Yellow/Navy (TT04)

SIZES
S-6XL

FABRIC
100% Polyester Fleece 300gsm
Poly/Cotton 2x2 Rib Knit



TAPED HI VIS FLEECE HOODIE
BK6819T

- / Reflective taped hoop pattern around body
- / Premium polyester low pill fleece
- / Shaped hood with contrast internal lining
- / Internal rib collar for extra comfort
- / Full open front zip for easier accessibility
- / Front contrast kangaroo style shaped pockets
- / Rib cuffs with thumb opening

COLOURS (CODE)
Orange/Navy (TT05)
Yellow/Navy (TT04)

SIZES
S-6XL

FABRIC
100% Polyester Fleece 300gsm
Poly/Cotton 2x2 Rib Knit



HI VIS POLARFLEECE ZIP PULLOVER
BK6889

- / Contrast coloured zip-up collar
- / 1/4 closed front with zippered opening
- / Elasticised rib knit cuff and hem
- / Low pill polar fleece
- / Spliced front only with full hi vis back

COLOURS (CODE)
Orange/Navy (TT05)
Yellow/Navy (TT04)

SIZES
S-6XL

FABRIC
100% Polyester Polarfleece 300gsm
Poly/Cotton 2x2 Rib Knit



HI VIS FLEECE ZIP PULLOVER
BK6989

- / Premium polyester low pill fleece
- / 1/4 closed front with zippered opening
- / Rib cuffs with thumb opening

COLOURS (CODE)
Orange/Navy (TT05)
Yellow/Navy (TT04)

SIZES
S-6XL

FABRIC
100% Polyester Fleece 300gsm
Poly/Cotton 2x2 Rib Knit





Kyal is wearing
BJ6966T & BP6965T.

Bisley WORKWEAR PINK

Real Men are
wearing pink to
save women's lives.



Bisley is proud to announce that it has aligned with the National Breast Cancer Foundation (NBCF) as a Platinum Partner for the Real Men Wear Pink campaign, raising funds for research into the prevention of breast cancer.

The Real Men Wear Pink campaign challenges men and the working community to "Man Up" and wear pink, in support of the women in their lives.

Since the NBCF was established in 1994, more than \$105 million has been awarded to over 370 Australian-based research projects to improve the health and wellbeing of those affected by breast cancer.

NBCF has an aspirational goal of zero deaths from breast cancer by 2030. With 37 Australians diagnosed and 7 passing away every day, there is still much to do.

Bisley has seen an opportunity to give back by creating a new range of Pink Workwear and donating \$3 from the sale of each Pink shirt in the range to the NBCF.

The Pink Workwear range includes two day and night compliant shirts and one night only compliant shirt in both men's and women's styles. All Pink Workwear shirts feature the Platinum Partner NBCF logo embroidered on the sleeve.

Bisley Workwear ambassadors Scott Cam and Kyal and Kara from *The Block Fans vs Faves* are manning up to wear pink in support of the Real Men Wear Pink campaign. They're encouraging work sites across Australia to 'Pink Up' too by purchasing shirts from the Pink range and challenge each other to raise funds for NBCF.

Be part of the challenge, register today realmenwearpink.org.au



**NATIONAL BREAST
CANCER FOUNDATION
EMBROIDERY ON SLEEVE**

NBCF embroidery on
sleeve applies to all
shirts in Pink range





3M TAPED TWO TONE HI VIS COOL LIGHTWEIGHT SHIRT
BS6896

- / 3M 8910 Reflective taped hoop pattern around body
- / Platinum Partner of NBCF embroidery
- / Two chest pockets with button down flaps and pen division
- / Two piece contrast coloured structured collar
- / Vertical cotton mesh back ventilation
- / Underarm cotton mesh ventilation
- / Full gusset sleeve cuff

COLOURS (CODE)
Pink/Navy (TT32)

SIZES
S-6XL

FABRIC
100% Cotton Preshrunk Drill 155gsm
100% Cotton Open Mesh 200gsm



3M TAPED COOL HI VIS LIGHTWEIGHT SHIRT
BS6696T

- / 3M 8910 Reflective taped hoop pattern around body
- / Platinum Partner of NBCF embroidery
- / Two chest pockets with button down flaps and pen division
- / Two piece contrast coloured structured collar
- / Vertical cotton mesh back ventilation
- / Underarm cotton mesh ventilation
- / Two button adjustable sleeve cuff

COLOURS (CODE)
Yellow/Pink (TT33)
Orange/Pink (TT34)

SIZES
S-6XL

FABRIC
100% Cotton Preshrunk Drill 155gsm
100% Cotton Open Mesh 200gsm



WOMENS 3M TAPED TWO TONE HI VIS COOL LIGHTWEIGHT SHIRT
BL6896

- / 3M 8910 Reflective taped hoop pattern around body
- / Platinum Partner of NBCF embroidery
- / Two chest pockets with button down flaps and pen division
- / Two piece contrast coloured structured collar
- / Vertical cotton mesh back ventilation
- / Underarm cotton mesh ventilation
- / Panelled front with bust and waist shaping
- / Full gusset sleeve cuff

COLOURS (CODE)
Pink/Navy (TT32)

SIZES
8-24

FABRIC
100% Cotton Preshrunk Drill 155gsm
100% Cotton Open Mesh 200gsm



WOMENS 3M TAPED HI VIS COOL LIGHTWEIGHT SHIRT
BL6696T

- / 3M 8910 Reflective taped hoop pattern around body
- / Platinum Partner of NBCF embroidery
- / Two chest pockets with button down flaps and pen division
- / Two piece contrast coloured structured collar
- / Vertical cotton mesh back ventilation
- / Underarm cotton mesh ventilation
- / Panelled front with bust and waist shaping
- / Two button adjustable sleeve cuff

COLOURS (CODE)
Yellow/Pink (TT33)
Orange/Pink (TT34)

SIZES
8-24

FABRIC
100% Cotton Preshrunk Drill 155gsm
100% Cotton Open Mesh 200gsm



NBCF embroidery on sleeve applies to all shirts in range.
Bisley Workwear are the only official workwear partners of NBCF.



- **Yellow/Pink & Orange/Pink comply to day/night AS/NZS 4602.1:2011
- **Pink/Navy complies to night time Hi Vis AS/NZS 4602.1:2011 only
- **Pink vest does not comply to day time Hi Vis standards AS/NZS 4602.1:2011

PINK VEST
BK0345

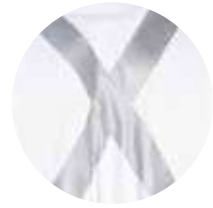
- / Vertical touch tape front fastening
- / Back tail drops down to cover lower back

COLOURS (CODE)
Pink (BF41)

SIZES
S-6XL

FABRIC
100% Polyester 120gsm





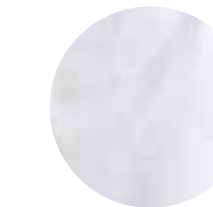
X back tape configuration.



Elastic back to improve fit.



Biomotion tape configuration (around arms and legs).



14x7 heavy duty drill fabric.

3M Taped
Night
Coverall
BC6806T



Refer to page 111 for more features.

Bisley
WORKWEAR

Our white high visibility Workwear takes care of you, so you can take care of the rest.

**NIGHT
SAFETY**

109





**3M TAPED NIGHT DRILL SHIRT
BS6807T**

- / 3M 8910 Reflective taped H pattern around body with X back and extra back hem tape plus biomotion taping on sleeve
- / Two chest pockets with touch tape closure flaps
- / Left pocket with pen division
- / Two button adjustable sleeve cuff



COLOURS (CODE)
White (BWHT)

SIZES
S–6XL

FABRIC
100% Cotton Preshrunk Drill 190gsm

**3M TAPED NIGHT COTTON
DRILL PANT
BP6808T**

- / 14 x 7 Heavy duty drill fabric
- / 3M 8910 Reflective biomotion tape around upper and lower leg
- / New improved fit with internal reinforced front rise
- / YKK zipper
- / Seven reinforced belt loops
- / Coin pocket in waistband
- / RHS mobile phone leg pocket with touch tape closure
- / Back mitred pockets
- / Reinforced stitching at front and back rise



COLOURS (CODE)
White (BWHT)

SIZES
77–112R, 87–132S

FABRIC
100% Cotton Preshrunk Drill 310gsm



**3M TAPED NIGHT COVERALL
BC6806T**

- / 14 x 7 Heavy duty drill fabric
- / 3M 8910 Reflective taped H pattern around body with X back and biomotion taping on sleeve and leg
- / New fit with set in sleeve
- / Concealed metal press studs at front and sleeve cuff
- / Front right chest pocket with zippered opening
- / Left front chest pocket with tool/knife division
- / Angled side pockets and side opening to body
- / Back utility patch pocket & ruler pocket
- / Additional mobile phone pocket with flap at outer ruler pocket
- / Double layer knee patch



COLOURS (CODE)
White (BWHT)

SIZES
77–117R, 92–132S

FABRIC
100% Cotton Preshrunk Drill 310gsm



Womens TenCate Tecasafe® Plus
Taped Two Tone Hi Vis FR Vented Shirt
BL8082T

Womens TenCate Tecasafe® Plus
Taped FR Engineered Cargo Pant
BPL8092T

Refer to page 115 & 120 for more features and colours.

We know how strong you are and how hard you work. That's why we created strong, hardworking garments to fit and flatter.

Bisley
WORKWEAR

WOMENS 113



Womens TenCate
Tecasafe® Plus Taped
Two Tone Hi Vis FR
Vented Shirt
BL8082T

Womens TenCate
Tecasafe® Plus
Taped FR Engineered
Cargo Pant
BPL8092T



**WOMENS 3M TAPED TWO TONE
HI VIS X AIRFLOW™ RIPSTOP SHIRT
BL6415T**

- / 3M 8910P Perforated Reflective taped hoop pattern
- / Twin chest patch pockets with touch tape closure
- / Left pocket with pen division
- / Two piece contrast coloured structured collar
- / Contoured shape two piece sleeve
- / Two button adjustable sleeve cuff

COLOURS (CODE)

Yellow/Navy (TT01)
Orange/Navy (TT02)

SIZES
8–24

FABRIC

100% Cotton Ripstop 150gsm
100% Cotton Open Mesh 125gsm



**WOMENS 3M TAPED HI VIS
X AIRFLOW™ RIPSTOP SHIRT
BL6416T**

- / 3M 8910P Perforated Reflective taped hoop pattern
- / Twin chest patch pockets with touch tape closure
- / Left pocket with pen division
- / Two piece structured collar
- / Contoured shape two piece sleeve
- / Two button adjustable sleeve cuff

COLOURS (CODE)

Orange (BVE0)

SIZES
8–24

FABRIC

100% Cotton Ripstop 150gsm
100% Cotton Open Mesh 125gsm



**WOMENS 3M TAPED TWO TONE
HI VIS INDUSTRIAL
COOL VENT SHIRT
BL6448T**

- / 3M 9920 Reflective taped hoop pattern around body
- / Twin chest pockets with flaps
- / Chevron tape detailing
- / Underarm and upper back cooling vents
- / Left pocket with pen division
- / Two piece sleeve with elbow dart
- / Spliced front only with full hi vis back

COLOURS (CODE)

Yellow/Navy (TT01)
Orange/Navy (TT02)

SIZES
8–24

FABRIC

100% Cotton Preshrunk Drill 190gsm
100% Cotton Open Mesh 200gsm



**WOMENS 3M TAPED HI VIS
INDUSTRIAL COOL VENT SHIRT
BL6445T**

- / 3M 9920 Reflective taped hoop pattern around body
- / Twin chest pockets with flaps
- / Chevron tape detailing
- / Underarm and upper back cooling vents
- / Left pocket with pen division
- / Two piece sleeve with elbow dart

COLOURS (CODE)

Yellow (BBLY)
Orange (BVE0)

SIZES
8–24

FABRIC

100% Cotton Preshrunk Drill 190gsm
100% Cotton Open Mesh 200gsm



**WOMENS TENCATE TECASAFE®
PLUS TAPED TWO TONE HI VIS
FR VENTED SHIRT
BL8082T**

- / Sto-nor 9801 FR Reflective taped hoop pattern around body and sleeve
- / Two piece structured collar
- / Two way radio loop or gas monitor loop on both sides
- / Left pocket with pen division
- / Twin chest pockets with plastic press snap closure
- / Full gusset sleeve cuff with plastic press snap closure

- / Action back panel ventilation, with three openings and underarm ventilation
- / Concealed press snap closure

COLOURS (CODE)

Orange/Navy (TT02)
Yellow/Navy (TT01)

SIZES
8–24

FABRIC

TenCate Tecasafe® Plus 700
FR Modacrylic Lyocell Aramid 238gsm
TenCate FR Mesh



**WOMENS TWO TONE HI VIS
DRILL SHIRT
BL6267**

- / Panelled front with bust and waist shaping
- / Two chest pockets with button down flaps
- / Two piece contrast coloured structured collar
- / Left pocket with pen division
- / Two button adjustable sleeve cuff

COLOURS (CODE)

Yellow/Navy (TT01)
Orange/Navy (TT02)

SIZES
8–24

FABRIC

100% Cotton Preshrunk Drill 190gsm



**WOMENS TENCATE TECASAFE®
PLUS TAPED TWO TONE HI VIS
LIGHTWEIGHT FR VENTED SHIRT
BL8098T**

- / Sto-nor 9801 FR Reflective taped hoop pattern around body and sleeve
- / Two piece structured collar
- / Two way radio loop or gas monitor loop on both sides
- / Left pocket with pen division
- / Twin chest pockets with plastic press snap closure
- / Full gusset sleeve cuff with plastic press snap closure

- / Action back panel ventilation, with three openings and underarm ventilation
- / Concealed press snap closure

COLOURS (CODE)

Orange/Navy (TT02)
Yellow/Navy (TT01)

SIZES
8–24

FABRIC

TenCate Tecasafe® Plus 580
FR Modacrylic Lyocell Aramid 197gsm
TenCate FR Mesh



**WOMENS 3M TAPED TWO TONE
HI VIS DRILL SHIRT
BLT6456**

- / 3M 8910 Reflective taped hoop pattern around body
- / Panelled front with bust and waist shaping
- / Two chest pockets with button down flaps
- / Two piece contrast coloured structured collar
- / Left pocket with pen division
- / Two button adjustable sleeve cuff

COLOURS (CODE)

Yellow/Navy (TT01)
Orange/Navy (TT02)

SIZES
8–24

FABRIC

100% Cotton Preshrunk Drill 190gsm



NBCF embroidery on RHS sleeve (pink only).



WOMENS 3M TAPED TWO TONE HI VIS COOL LIGHTWEIGHT SHIRT
BL6896

- / 3M 8910 Reflective taped hoop pattern around body
- / Two chest pockets with button down flaps and pen division
- / Two piece contrast coloured structured collar
- / Vertical cotton mesh back ventilation
- / Underarm cotton mesh ventilation
- / Panelled front with bust and waist shaping
- / Full gusset sleeve cuff

COLOURS (CODE)
Yellow/Navy (TT01)
Orange/Navy (TT02)
Pink/Navy (TT32)

SIZES
8–24

FABRIC
100% Cotton Preshrunk Drill 155gsm
100% Cotton Open Mesh 200gsm



WOMENS 3M TAPED HI VIS COOL LIGHTWEIGHT SHIRT
BL6696T

- / 3M 8910 Reflective taped hoop pattern around body
- / Platinum Partner of NBCF embroidery
- / Two chest pockets with button down flaps and pen division
- / Two piece contrast coloured structured collar
- / Vertical cotton mesh back ventilation
- / Underarm cotton mesh ventilation
- / Panelled front with bust and waist shaping
- / Two button adjustable sleeve cuff

COLOURS (CODE)
Yellow/Pink (TT33)
Orange/Pink (TT34)

SIZES
8–24

FABRIC
100% Cotton Preshrunk Drill 155gsm
100% Cotton Open Mesh 200gsm



WOMENS X AIRFLOW™ RIPSTOP SHIRT
BL6414

- / Twin chest patch pockets with touch tape closure
- / Contoured shape two piece sleeve
- / Twin sleeve patch pocket and flap with pen division
- / Hidden roll up sleeve tab in sleeve pocket
- / Two piece structured collar
- / Two button adjustable sleeve cuff

COLOURS (CODE)
Navy (BPCT)
Charcoal (BCCG)

SIZES
8–24

FABRIC
100% Cotton Ripstop 150gsm
100% Cotton Open Mesh 125gsm



WOMENS DRILL SHIRT
BL6339

- / Re-engineered sleeve fit
- / Panelled front with bust and waist shaping
- / Two chest pockets with button down flaps
- / Two piece structured collar
- / Left pocket with pen division
- / Two button adjustable sleeve cuff

COLOURS (CODE)
Khaki (BCDR)
Navy (BPCT)

SIZES
8–24

FABRIC
100% Cotton Preshrunk Drill 190gsm



WOMENS CHAMBRAY SHIRT
B71407L

- / Panelled front with bust and waist shaping
- / Double chest mitred patch pockets with buttoned opening
- / Left chest pocket with pen division
- / Two piece structured buttoned down collar
- / Contrast coloured buttons and stitching
- / Classic chambray weave fabric

COLOURS (CODE)
Blue (BWED)

SIZES
8–24

FABRIC
100% Cotton Chambray 150gsm



WOMENS CHAMBRAY SHIRT
B76407L

- / Panelled front with bust and waist shaping
- / Double chest mitred patch pockets with buttoned opening
- / Left chest pocket with pen division
- / Two piece structured buttoned down collar
- / Two button adjustable sleeve cuff
- / Contrast coloured buttons and stitching
- / Classic chambray weave fabric

COLOURS (CODE)
Blue (BWED)

SIZES
8–24

FABRIC
100% Cotton Chambray 150gsm



WOMENS CROSS DYED SHIRT
BL1646

- / Panelled front with bust and waist shaping
- / Back pleats for increased shoulder movement
- / Two piece structured collar

COLOURS (CODE)
Blue (BWED)

SIZES
8–24

FABRIC
65% Polyester, 35% Cotton Cross-Dyed Poplin 110gsm



WOMENS CROSS DYED SHIRT
BL6646

- / Panelled front with bust and waist shaping
- / Two button adjustable sleeve cuff
- / Back pleats for increased shoulder movement
- / Two piece structured collar

COLOURS (CODE)
Blue (BWED)

SIZES
8–24

FABRIC
65% Polyester, 35% Cotton Cross-Dyed Poplin 110gsm





X AIRFLOW™ WOMENS 3M TAPED RIPSTOP VENTED WORK PANT BPL6474T

- / 3M 8910P Perforated Reflective tape around lower leg
- / Curved waistband to prevent gaping at back
- / Front slant pockets
- / Multi-purpose pockets on front legs
- / Twin back pockets with reinforced patches
- / Seven reinforced wider and stronger belt loops
- / Back yoke ventilation
- / Front double layered knee patches

COLOURS (CODE)
Navy (BPCT)

SIZES
6–24

FABRIC
100% Cotton Twill Ripstop 234gsm
100% Cotton Open Mesh 125gsm



X AIRFLOW™ WOMENS RIPSTOP VENTED WORK PANT BPL6474

- / Curved waistband to prevent gaping at back
- / Front slant pockets
- / YKK zipper
- / Multi-purpose pockets on front legs
- / Twin back pockets with reinforced patches
- / Seven reinforced wider and stronger belt loops
- / Back yoke ventilation
- / Front double layered knee patches

COLOURS (CODE)
Black (BBLK)
Charcoal (BCCG)
Navy (BPCT)

SIZES
6–24

FABRIC
100% Cotton Twill Ripstop 234gsm
100% Cotton Open Mesh 125gsm



WOMENS 3M TAPED COOL VENTED LIGHTWEIGHT PANT WITH CONTRAST STITCHING BPL6431T

- / 3M 8910 Reflective tape around upper leg
- / Mitred angled front pockets
- / Back yoke with open mesh vents
- / Welt leg pockets with touch tape closure
- / YKK zipper
- / RHS back patch pocket

COLOURS (CODE)
Navy (BPCT)

SIZES
6–24

FABRIC
100% Cotton Preshrunk Drill 190gsm
100% Polyester Mesh



Soft feel fabric.



WOMENS COOL VENTED LIGHTWEIGHT PANT WITH CONTRAST STITCHING BPL6431

- / Mitred angled front pockets
- / Back yoke with open mesh vents
- / Welt leg pockets with touch tape closure
- / YKK zipper
- / RHS back patch pocket

COLOURS (CODE)
Navy (BPCT)

SIZES
6–24

FABRIC
100% Cotton Preshrunk Drill 190gsm
100% Polyester Mesh



Soft feel fabric.



WOMENS INDUSTRIAL ENGINEERED DRILL PANT BPL6021

- / Engineered fit - contoured shaped leg and knee
- / Curved waistband to prevent gaping at back
- / Four multifunctional pockets including cargo style welt pocket
- / Mitred patch pockets
- / Double layer knee for protection against wear and tear
- / YKK zipper
- / Seven wider and strong belt loops
- / Thicker and stronger top stitching thread

COLOURS (CODE)
Navy (BPCT)

SIZES
6–24

FABRIC
100% Cotton Preshrunk Drill 310gsm



WOMENS 3M TAPED INDUSTRIAL ENGINEERED DRILL PANT BPL6021T

- / 3M 9920 Reflective tape around lower leg
- / Engineered fit – contoured shaped leg and knee
- / Curved waistband to prevent gaping at back
- / Four multifunctional pockets including cargo style welt pocket
- / Mitred patch pockets
- / Double layer knee for protection against wear and tear
- / Seven wider and stronger belt loops

COLOURS (CODE)
Navy (BPCT)

SIZES
6–24

FABRIC
100% Cotton Preshrunk Drill 310gsm



WOMENS INDUSTRIAL BOOT LEG WORK DENIM JEAN BPL6053

- / Modern subtle boot leg fit
- / Garment washed for comfort
- / Classic five pocket styling with front angle-shaped access
- / Twin needle and triple needle top stitching for extra durability
- / YKK zipper

COLOURS (CODE)
Dark Denim (BDAD)

SIZES
8–24

FABRIC
100% Cotton Denim 490gsm (14.5oz)



WOMENS 3M TAPED INDUSTRIAL BOOT LEG WORK DENIM JEAN BPL6053T

- / 3M 9920 Reflective tape around lower leg
- / Modern subtle boot leg fit
- / Garment washed for comfort
- / Classic five pocket styling with front angle-shaped access
- / Twin needle and triple needle top stitching for extra durability
- / YKK zipper

COLOURS (CODE)
Dark Denim (BDAD)

SIZES
8–24

FABRIC
100% Cotton Denim 490gsm (14.5oz)





WOMENS ORIGINAL COTTON DRILL PANT BPL6007

- / Mobile phone pocket on right side
- / Key loop on front left side
- / Two angled side pockets
- / YKK zipper
- / Back patch pockets

COLOURS (CODE)

Navy (BPCT)

SIZES

6-24

FABRIC

100% Cotton Preshrunk Drill 310gsm



WOMENS ROUGH RIDER DENIM STRETCH JEANS BPL6712

- / Stretch denim for extra comfort
- / Regular fit leg and waist
- / Five pocket jean with six belt loops
- / YKK zipper
- / Reinforced riveted stress points
- / Double stitched seams for increased durability
- / Stone wash finish

COLOURS (CODE)

Denim (BTWB)

SIZES

8-24

FABRIC

95% Cotton Denim, 5% Elastane 465gsm (13.75oz)



WOMENS 3M TAPED ORIGINAL DRILL PANT BPL6007T

- / 3M 8910 Reflective taped hoop pattern around lower leg
- / Mobile phone pocket on right side
- / Key loop on front left side
- / Two angled side pockets
- / YKK zipper
- / Back patch pockets

COLOURS (CODE)

Navy (BPCT)

SIZES

6-24

FABRIC

100% Cotton Preshrunk Drill 310gsm



WOMENS TENCATE TECASAFE® PLUS TAPED FR ENGINEERED CARGO PANT BPL8092T

- / Sto-nor 9801 FR Reflective tape around upper leg
- / Curved waistband to prevent gaping at back
- / Front angled pockets
- / YKK zipper
- / LHS cargo pockets
- / Back yoke ventilation
- / Double back hip welt pocket covered with flap
- / Mobile phone welt pocket
- / Back hip welt pockets with touch tape

COLOURS (CODE)

Navy (BPCT)

SIZES

6-24

FABRIC

TenCate Tecasafe® Plus 700
FR Modacrylic Lyocell Aramid 238gsm



Lightweight.

WOMENS LIGHTWEIGHT UTILITY SHORT BSHL1999

- / Two side angled pockets
- / Coin pocket on RHS
- / YKK zipper
- / Utility open pocket with touch tape closure
- / Cargo pocket with gusset touch tape closure

COLOURS (CODE)

Khaki (BCDR)

Navy (BPCT)

SIZES

6-24

FABRIC

100% Cotton Preshrunk Drill 240gsm



Kara is wearing BL6414 & BPL6474.



Bisley WORKWEAR INDEX

Your quick find reference guide
to the extensive Bisley range.

122

3M Taped Two
Tone Hi Vis
Industrial Cool
Vent Shirt
BS6448T

3M Taped
Industrial
Engineered
Cargo Pant
BPC6021T



SHIRTS

MENS



FLEX & MOVE MECHANICAL STRETCH SHIRT
BS1133 PG 26, 72



FLEX & MOVE MECHANICAL STRETCH SHIRT
BS6133 PG 6, 26, 43, 72



X AIRFLOW™ RIPSTOP SHIRT
BS6414 PG 26, 67



ORIGINAL COTTON DRILL SHIRT
BS1433 PG 27



ORIGINAL COTTON DRILL SHIRT
BS6433 PG 27



COOL LIGHTWEIGHT DRILL SHIRT
BS1893 PG 27



COOL LIGHTWEIGHT DRILL SHIRT
BS6893 PG 27



CLOSED FRONT COTTON DRILL SHIRT
BSC1433 PG 28



CLOSED FRONT COTTON DRILL SHIRT
BSC6433 PG 24, 25, 28



MENS POLY/COTTON POLO SHIRT
BK1290 PG 28



CHAMBRAY SHIRT
B71407 PG 29



CHAMBRAY SHIRT
B76407 PG 29



EPAULETTE SHIRT
B71526 PG 30



EPAULETTE SHIRT
B76526 PG 30



PERMANENT PRESS SHIRT
BS1526 PG 30



PERMANENT PRESS SHIRT
BS6526 PG 30



OXFORD SHIRT
BS1030 PG 31



OXFORD SHIRT
BS6030 PG 31



MINI TWILL SHIRT
BS1255 PG 31



MINI TWILL SHIRT
BS6255 PG 31

SHIRTS MENS



ADVENTURE SHIRT
BS6145 PG 31



METRO SHIRT
BS1031 PG 32



METRO SHIRT
BS6031 PG 32



3M TAPED TWO TONE HI VIS
X AIRFLOW™ RIPSTOP SHIRT
BS6415T PG 8, 46, 64, 66



3M TAPED HI VIS X AIRFLOW™ RIPSTOP SHIRT
BS6416T PG 46,66



TWO TONE HI VIS X AIRFLOW™ RIPSTOP SHIRT
BS6415 PG 47, 65, 67



TWO TONE HI VIS COOL
LIGHTWEIGHT DRILL SHIRT
BS1895 PG 47



TWO TONE HI VIS COOL
LIGHTWEIGHT DRILL SHIRT
BS6895 PG 47



3M TAPED TWO TONE COOL LIGHTWEIGHT SHIRT
WITH SHOULDER TAPE
BS6432T PG 47



3M TAPED TWO TONE HI VIS COOL LIGHTWEIGHT
SHIRT – EMBROIDERY PACK
BS6896EP PG 48



3M TAPED TWO TONE HI VIS COOL
LIGHTWEIGHT SHIRT
BS6896 PG 48, TT32: PG 19, 106



3M TAPED TWO TONE HI VIS
COOL LIGHTWEIGHT CLOSED FRONT SHIRT
BSC6896 PG 49



3M TAPED COOL LIGHTWEIGHT HI VIS SHIRT
BS6897 PG 44, 45, 49



COOL LIGHTWEIGHT HI VIS DRILL SHIRT
BS6894 PG 49



3M TAPED X-BACK COOL LIGHTWEIGHT
HI VIS DRILL SHIRT
BS6156T PG 49



3M TAPED COOL HI VIS LIGHTWEIGHT SHIRT
BS6696T PG 19, 50, 106



TWO TONE HI VIS POLO SHIRT
BK1234 PG 51



TWO TONE HI VIS POLO SHIRT
BK6234 PG 51



3M TAPED HI VIS TWO TONE POLYESTER
MICROMESH POLO
BK1258T PG 51



3M TAPED HI VIS TWO TONE POLYESTER
MICROMESH POLO
BK6258T PG 51

SHIRTS MENS



TWO TONE HI VIS DRILL SHIRT
BS6267 PG 55



TWO TONE CLOSED FRONT HI VIS DRILL SHIRT
BSC6267 PG 55



3M TAPED NIGHT DRILL SHIRT
BS6807T PG 15, 55, 110



HI VIS DRILL SHIRT
BS6339 PG 56



HI VIS CLOSED FRONT COTTON DRILL SHIRT
BSC6433 PG 56



3M TAPED HI VIS CLOSED FRONT DRILL SHIRT
BTC6482 PG 56



3M TAPED HI VIS DRILL SHIRT
BT6482 PG 56



3M TAPED HI VIS INDUSTRIAL COOL VENT SHIRT
BS6445T PG 57, 76



3M TAPED TWO TONE HI VIS
INDUSTRIAL COOL VENT SHIRT
BS6448T PG 22, 54, 57, 74, 75, 77, 122



3M TAPED TWO TONE HI VIS DRILL SHIRT
BS6267T PG 58



3M TAPED TWO TONE CLOSED FRONT HI VIS
DRILL SHIRT
BTC6456 PG 58



3M TAPED TWO TONE HI VIS DRILL SHIRT
BT6458 PG 58



3M TAPED TWO TONE HI VIS DRILL SHIRT
BT6456 PG 59



3M TAPED TWO TONE HI VIS SHIRT -
EMBROIDERY PACK
BT6456EP PG 59



TENCATE TECASAFE® PLUS TAPED HI VIS FR
VENTED SHIRT
BS8081T PG 82



TENCATE TECASAFE® PLUS TAPED TWO TONE HI
VIS FR VENTED SHIRT
BS8082T PG 12, 13, 80, 81, 82



TENCATE TECASAFE® PLUS TAPED HI VIS LIGHT-
WEIGHT FR VENTED SHIRT
BS8097T PG 82



TENCATE TECASAFE® PLUS TAPED TWO TONE HI
VIS LIGHTWEIGHT FR VENTED SHIRT
BS8098T PG 82



TENCATE TECASAFE® TAPED
HI VIS FR NON VENTED SHIRT
BS8197T PG 83



TENCATE TECASAFE® PLUS TAPED
TWO TONE HI VIS FR NON VENTED SHIRT
BS8198T PG 83

SHIRTS MENS



TENCATE TECASAFE® PLUS TAPED TWO TONE HI VIS FR CLOSED FRONT SHIRT WITH CONCEALED FRONT PLACKET
BSC8075T PG 87



WESTEX ULTRASOFT® 3M TAPED TWO TONE HI VIS FR SHIRT
BS8002 PG 90



WESTEX ULTRASOFT® 3M TAPED HI VIS FR SHIRT
BS8004 PG 90



INSECT PROTECTION TWO TONE HI VIS SHIRT
VRS6267 PG 93



INSECT PROTECTION TWO TONE COOL LIGHTWEIGHT VENTED DRILL SHIRT
VRS6895 PG 93



INSECT PROTECTION CHAMBRAY SHIRT
VRS76407 PG 93



INSECT PROTECTION FISHING SHIRT
VRS6140 PG 93

VESTS MENS



HI VIS VEST
BK0345 PG 50, BF41: PG 107



HI VIS VEST X BACK TAPE
BT0347 PG 50



SOFT SHELL VEST
BV0360 PG 100



TAPED HI VIS SOFT SHELL VEST
BV0348T PG 100

JACKETS MENS



TAPED TWO TONE HI VIS FR JACKET
BJ8100T PG 10, 89, 91



5 IN 1 RAIN JACKET
BK6975 PG 96



TAPED TWO TONE HI VIS RAIN SHELL JACKET
BJ6966T PG 94, 95, 97, 102



TAPED HI VIS RAIN SHELL JACKET
BJ6967T PG 97



TAPED SHELL JACKET WITH X BACK
BJ6968T PG 97



3M TAPED HI VIS 3 IN 1 DRILL JACKET
BJ6970T PG 98



DRILL JACKET
BK6709 PG 99



TWO TONE HI VIS DRILL JACKET
BK6710 PG 99

JACKETS MENS



3M TAPED TWO TONE HI VIS DRILL JACKET
BK6710T PG 99



SOFT SHELL JACKET
BJ6060 PG 100



TAPED SOFT SHELL JACKET
BJ6059T PG 100



HI VIS FLEECE HOODIE
BK6819 PG 101



TAPED HI VIS FLEECE HOODIE
BK6819T PG 101



HI VIS POLARFLEECE ZIP PULLOVER
BK6889 PG 101



HI VIS FLEECE ZIP PULLOVER
BK6989 PG 101

COVERALLS MENS



DRILL COVERALL
BC6007 PG 42



ACTION BACK OVERALL
BAB0007 PG 42



3M TAPED TWO TONE HI VIS LIGHTWEIGHT COVERALL
BC6719TW PG 53



3M TAPED HI VIS LIGHWEIGHT COVERALL
BC6718TW PG 53



TWO TONE HI VIS DRILL COVERALL
BC6357 PG 63



3M TAPED HI VIS DRILL COVERALL
BC60778 PG 63



3M TAPED NIGHT COVERALL
BC6806T PG 15, 63, 108, 109, 111



TENCATE TECASAFE® PLUS TAPED HI VIS ENGINEERED FR VENTED COVERALL
BC8085T PG 85



TENCATE TECASAFE® PLUS TAPED TWO TONE HI VIS ENGINEERED FR VENTED COVERALL
BC8086T PG 85



TENCATE TECASAFE® PLUS TAPED HI VIS LIGHTWEIGHT FR NON VENTED ENGINEERED COVERALL
BC8185T PG 85

COVERALLS

MENS



TENCATE TECASAFE® PLUS TAPED
TWO TONED HI VIS LIGHTWEIGHT FR
NON VENTED ENGINEERED COVERALL
BC8186T
PG 85

TENCATE TECASAFE® PLUS TAPED HI
VIS LIGHTWEIGHT FR NON VENTED
ENGINEERED COVERALL WITH ZIP
CLOSURE
BS8178T
PG 87
*Actual garment will feature pockets with
nylon zip opening

TENCATE TECASAFE® PLUS TAPED
TWO TONE HI VIS LIGHTWEIGHT FR
NON VENTED ENGINEERED COVERALL
WITH ZIP CLOSURE
BS8177T
PG 87
*Actual garment will feature pockets with
nylon zip opening

WESTEX ULTRASOFT® 3M TAPED
HI VIS FR COVERALL
BC8001
PG 91

WESTEX ULTRASOFT® 3M TAPED
HI VIS TWO TONE FR COVERALL
BC8001
PG 91

PANTS

MENS



FLEX & MOVE MECHANICAL STRETCH PANT
BPC6130
PG 7, 33, 43, 72

X AIRFLOW™ RIPSTOP VENTED WORK PANT
BP6474
PG 34, 68

X AIRFLOW™ RIPSTOP ENGINEERED
CARGO WORK PANT
BPC6475
PG 34, 68

ORIGINAL 8 POCKET CARGO PANT
BPC6007
PG 34



ORIGINAL COTTON DRILL WORK PANT
BP6007
PG 14, 35

COOL VENTED LIGHTWEIGHT CARGO PANT WITH
CONTRAST STITCHING
BPC6431
PG 35

INDUSTRIAL ENGINEERED CARGO PANT
BPC6021
PG 36, 78

COTTON DRILL FLAT FRONT WORK PANT
BP6006
PG 14, 36

PANTS

MENS



COTTON DRILL CARGO WORK PANT
BPC6006
PG 36

COTTON DRILL COOL LIGHTWEIGHT WORK PANT
BP6899
PG 37

COOL LIGHTWEIGHT UTILITY PANT
BP6999
PG 37

RAZAR CORDURA® UTILITY PANT
BPU6110
PG 37



INDUSTRIAL STRAIGHT LEG WORK DENIM JEAN
BP6053
PG 38, 79

ROUGH RIDER DENIM STRETCH JEANS
BP6712
PG 38

ROUGH RIDER DENIM JEANS
BP6050
PG 39

CHINO PANT EASY-FIT WAIST
BP6092
PG 39



PERMANENT PRESS TROUSER
BP6123D
PG 39

X AIRFLOW™ 3M TAPED RIPSTOP
VENTED WORK PANT
BP6474T
PG 52, 69

X AIRFLOW™ 3M TAPED RIPSTOP
ENGINEERED CARGO WORK PANT
BPC6475T
PG 9, 52, 64, 65, 69

3M TAPED COOL VENTED LIGHTWEIGHT
CARGO PANT WITH CONTRAST STITCHING
BPC6431T
PG 45, 53



3M TAPED INDUSTRIAL ENGINEERED
CARGO PANT
BPC6021T
PG 22, 54, 60, 74, 75, 78, 122

3M TAPED COTTON DRILL CARGO WORK PANT
BPC6006T
PG 61

3M DOUBLE TAPED COTTON DRILL
CARGO WORK PANT
BPC6003T
PG 61

3M TAPED COTTON DRILL WORK PANT
BP6006T
PG 61

PANTS MENS



3M DOUBLE TAPED WORK PANT
BP6003T PG 60



3M TAPED 8 POCKET CARGO PANT
BPC6007T PG 62



3M TAPED ORIGINAL WORK PANT
BP6007T PG 62



3M TAPED NIGHT COTTON DRILL PANT
BP6808T PG 15, 60, 110



3M TAPED ROUGH RIDER JEANS
BP6050T PG 62



3M TAPED INDUSTRIAL STRAIGHT LEG
WORK DENIM JEAN
BP6053T PG 62, 79



TENCATE TECASAFE® PLUS ENGINEERED
FR VENTED CARGO PANT
BPC8092 PG 84



TENCATE TECASAFE® PLUS TAPED
ENGINEERED FR VENTED CARGO PANT
BPC8092T PG 12, 13, 80, 81, 84



TENCATE TECASAFE® PLUS TAPED
ENGINEERED FR PANT
BP8090T PG 84



WESTEX ULTRASOFT® FR WORK PANT
BP8010 PG 90



WESTEX ULTRASOFT® 3M TAPED
FR WORK PANT
BP8000 PG 90



INSECT PROTECTION ORIGINAL
DRILL WORK PANT
VRP6007 PG 92



INSECT PROTECTION COOL
LIGHTWEIGHT UTILITY PANT
VRP6999 PG 92



TAPED TWO TONE HI VIS SHELL RAIN PANT
BP6965T PG 95, 97, 102

SHORTS MENS



PERMANENT PRESS SHORT
BSH1123D PG 39



FLEX & MOVE MECHANICAL STRETCH SHORT
BSHC1130 PG 40, 72



X AIRFLOW™ RIPSTOP VENTED WORK SHORT
BSH1474 PG 40, 69



ORIGINAL DRILL WORK SHORT
BSH1007 PG 40



ORIGINAL 8 POCKET CARGO SHORT
BSHC1007 PG 40



COOL LIGHTWEIGHT UTILITY SHORT
BSH1999 PG 41



COOL VENTED LIGHTWEIGHT CARGO
SHORT WITH CONTRAST STITCHING
BSHC1431 PG 41



DRILL RUGBY SHORT
BSHRB1007 PG 41



DRILL SIDE TAB SHORT
BSH1256 PG 41



CAMO SHORT
BSH1828 PG 42



RAZAR CORDURA® UTILITY SHORT
BSHU1110 PG 42



3M TAPED COOL VENTED LIGHTWEIGHT CARGO
SHORT WITH CONTRAST STITCHING
BSHC1432T PG 52

ACCESSORIES MENS



INSECT PROTECTION
ANTI BACTERIAL SOCKS
VRSX7205 PG 92

SHIRTS

WOMENS



WOMENS X AIRFLOW™ RIPSTOP SHIRT
BL6414 PG 17, 26, 43, 67, 116, 121



WOMENS DRILL SHIRT
BL6339 PG 28, 116



WOMENS CHAMBRAY SHIRT
B71407L PG 29, 117



WOMENS CHAMBRAY SHIRT
B76407L PG 29, 117



WOMENS CROSS DYED SHIRT
BL1646 PG 32, 117



WOMENS CROSS DYED SHIRT
BL6646 PG 32, 117



WOMENS 3M TAPED TWO TONE HI VIS X
AIRFLOW™ RIPSTOP SHIRT
BL6415T PG 46, 66, 114



WOMENS 3M TAPED HI VIS
X AIRFLOW™ RIPSTOP SHIRT
BL6416T PG 46, 66, 114



WOMENS 3M TAPED TWO TONE HI VIS COOL
LIGHTWEIGHT SHIRT
BL6896 PG 48, TT32: PG 17, 106, 116



WOMENS 3M TAPED HI VIS COOL
LIGHTWEIGHT SHIRT
BL6696T PG 50, 106, 116



WOMENS TWO TONE HI VIS DRILL SHIRT
BL6267 PG 55, 115



WOMENS 3M TAPED HI VIS
INDUSTRIAL COOL VENT SHIRT
BL6445T PG 17, 57, 76, 114



WOMENS 3M TAPED TWO TONE HI VIS
INDUSTRIAL COOL VENT SHIRT
BL6448T PG 57, 77, 114



WOMENS 3M TAPED TWO TONE HI VIS
DRILL SHIRT
BLT6456 PG 59, 115



WOMEN TENCATE TECASAFE® PLUS TAPED TWO
TONE HI VIS LIGHTWEIGHT FR VENTED SHIRT
BL8082T PG 83, 112, 113, 115



WOMENS TENCATE TECASAFE® PLUS TAPED
TWO TONE HI VIS FR VENTED SHIRT
BL8098T PG 17, 83, 115



WOMENS TENCATE TECASAFE® PLUS TAPED
TWO TONE HI VIS FR CLOSED FRONT SHIRT WITH
CONCEALED FRONT PLACKET BLC8075T PG 87

PANTS

WOMENS



WOMENS X AIRFLOW™
RIPSTOP VENTED WORK PANT
BPL6474 PG 17, 34, 43, 68, 118



WOMENS ORIGINAL COTTON
DRILL WORK PANT
BPL6007 PG 35, 120



WOMENS COOL VENTED LIGHTWEIGHT
PANT WITH CONTRAST STITCHING
BPL6431 PG 17, 35, 118



WOMENS INDUSTRIAL
ENGINEERED DRILL PANT
BPL6021 PG 17, 36, 78, 119



WOMENS INDUSTRIAL BOOT LEG WORK
DENIM JEAN
BPL6053 PG 38, 79, 119



WOMENS ROUGH RIDER DENIM STRETCH JEANS
BPL6712 PG 38, 120



WOMENS X AIRFLOW™ 3M TAPED
RIPSTOP VENTED WORK PANT
BPL6474T PG 52, 69, 118



WOMENS 3M TAPED COOL VENTED
LIGHTWEIGHT PANT WITH CONTRAST STITCHING
BPL6431T PG 17, 53, 118



WOMENS 3M TAPED INDUSTRIAL
ENGINEERED DRILL PANT
BPL6021T PG 17, 60, 78, 119



WOMENS 3M TAPED ORIGINAL WORK PANT
BPL6007T PG 62, 120



WOMENS 3M TAPED INDUSTRIAL BOOT LEG
WORK DENIM JEAN
BPL6053T PG 62, 79, 119



WOMENS TENCATE TECASAFE® PLUS TAPED
FR ENGINEERED CARGO PANT
BPL8092T PG 84, 112, 113, 120



WOMENS LIGHTWEIGHT UTILITY SHORT
BSHL1999 PG 41, 120

SHORTS												MENS
Size	77	82	87	92	97	102	107	112	117	122	127	132
To fit waist size (cm)	77	82	87	92	97	102	107	112	117	122	127	132
To fit waist size (inches)	30	32	34	36	38	40	42	44	46	48	50	52

PANTS												MENS
Size REGULAR	77R	82R	87R	92R	97R	102R	107R	112R	117R			
To fit waist size (cm)	77	82	87	92	97	102	107	112	117			
To fit waist size (inches)	30	32	34	36	38	40	42	44	46			
In-leg length (cm)	80	82	82	84	84	86	86	88	88			
Size STOUT			87S	92S	97S	102S	107S	112S	117S	122S	127S	132S
To fit waist size (cm)			87	92	97	102	107	112	117	122	127	132
To fit waist size (inches)			34	36	38	40	42	44	46	48	50	52
In-leg length (cm)			78	80	80	82	82	84	84	84	84	84
Size LONG	74L	79L	84L	89L	94L							
To fit waist size (cm)	74	79	84	89	94							
To fit waist size (inches)	29	31	33	35	37							
In-leg length (cm)	85	85	87	87	88							

OVERALLS													MENS
Size REGULAR	77R	82R	87R	92R	97R	102R	107R	112R	117R	122R	127R	132R	
To fit chest size (cm)	87	92	97	102	107	112	117	122	127	132	137	142	
To fit chest size (inches)	34	36	38	40	42	44	46	48	50	52	54	56	
To fit waist size (cm)	77	82	87	92	97	102	107	112	117	122	127	132	
To fit waist size (inches)	30	32	34	36	38	40	42	44	46	48	50	52	
In-leg length (cm)	80	80	82	82	84	84	86	86	87	87	87	87	
Imperial size	3R	4R	5R	6R	7R	8R	9R	10R	11R	11R	11R	11R	
NZ size	3R	4R	5R	6R	7R	8R	9R	10R	11R	12R	13R	14R	
Bisley internal size code	3	4	5	6	7	8	9	10	15	16	17	18	

Size STOUT			87S	92S	97S	102S	107S	112S	117S	122S	127S	132S
To fit chest size (cm)			97	102	107	112	117	122	127	132	137	142
To fit chest size (inches)			38	40	42	44	46	48	50	52	54	56
To fit waist size (cm)			87	92	97	102	107	112	117	122	127	132
To fit waist size (inches)			34	36	38	40	42	44	46	48	50	52
In-leg length (cm)			78	78	80	80	82	82	83	83	83	83
Imperial size			3.25S	4.25S	5.25S	6.25S	7.25S	8.25S	9.25S	10.25S	11.25S	12.25S
NZ size			5S	6S	7S	8S	9S	10S	11S	12S	13S	14S
Bisley internal size code			21	22	23	24	25	26	11	12	13	14

Size LONG	74L	79L	84L	89L	94L	TRADITIONAL FIT	ACTIVE FIT
To fit chest size (cm)	87	92	97	102	107	Workwear garments are traditionally bigger in terms of fit compared to fashion or casualwear. Bisley garments are well known for their generous fit, providing greater comfort and movement when you work.	Bisley Active Fit shirts are one size smaller than the traditional fit. This is made possible due to the stretch component of the garment.
To fit chest size (inches)	34	36	38	40	42		
To fit waist size (cm)	77	82	87	92	97		
To fit waist size (inches)	30	32	34	36	38		
In-leg length (cm)	85	85	87	87	88		
Imperial size	3.5L	4.5L	5.5L	6.5L	7.5L	MODERN FIT	Bisley Active Fit pants/shorts are lower waisted (approx 4cm below true waist), half size bigger in the waist, one size smaller in the thigh, knee and hem opening. The Active Fit is ideal for workers who prefer stretch garments to enhance comfort, flexibility and movement whilst maintaining durability.
NZ size	3L	4L	5L	6L	7L	Bisley Modern Fit shirts are half a size smaller than the Traditional Fit. Bisley Modern Fit pants/shorts are lower waisted (approx 4cm below true waist), half size bigger in the waist, half size smaller in the thigh, knee and hem opening.	
Bisley internal size code	32	33	34	35	36		

SIZING & HOW TO MEASURE

MEN'S MEASUREMENTS	WOMEN'S MEASUREMENTS
--------------------	----------------------

1.

NECK: Measure around the neck where the top of the shirt collar would sit.
2.

CHEST: Standing naturally, measure around the fullest part of the chest and shoulder, under the arms with your arms at resting position.
3.

WAIST: Measure over undergarments at the natural waistline (usually approx. 1cm below the navel).
4.

IN-LEG: Measure from crotch to floor, with shoes.
1.

BUST: Measure around the fullest part of the bust and shoulder, under the arms with your arms at resting position.
2.

WAIST: Measure over undergarments at the natural waistline (usually approx. 1cm above the navel).
3.

LOWER WAIST: Measure over undergarment approx. 4cm below the natural waistline.
4.

HIP: Measure over undergarments at hips (usually the widest part and is approx. 25cm below the waistline).
5.

IN-LEG: Measure from crotch to floor, with shoes.



SHIRTS											MENS
Size	XS	S	M	L	XL	2XL	3XL	4XL	5XL	6XL	
To fit neck size (cm)	36	37/38	39/40	41/42	43/44	46	48	50	52	54	
To fit chest size (cm)	87	92	97	102	107	112	117	122	127	132	
To fit chest size (inches)	34	36	38	40	42	44	46	48	50	52	

JACKETS/ KNITWEAR											MENS
Size	XS	S	M	L	XL	2XL	3XL	4XL	5XL	6XL	
To fit chest size (cm)	87	92	97	102	107	112	117	122	127	132	
To fit chest size (inches)	34	36	38	40	42	44	46	48	50	52	

ALL STYLES											WOMENS
Size	6	8	10	12	14	16	18	20	22	24	
To fit bust size (cm)	80	85	90	95	100	105	110	115	120	125	
To fit natural waist size (cm)	60	65	70	75	80	85	90	95	100	105	
To fit lower waist size (cm)	67	72	77	82	87	92	97	102	107	112	
To fit hip size (cm)	87	92	97	102	107	112	117	122	127	132	
In-leg length (cm)	78	80	80	82	82	84	84	86	86	86	



CUSTOMER SUPPORT

DISTRIBUTOR SUPPORT INFORMATION

Bisley Workwear has established an extensive distributor network throughout Australia, New Zealand, Papua New Guinea and other international locations. Please be aware that Bisley Workwear does not sell products directly to consumers and will always refer you to our valued distributor network list which is also available on our website.

CUSTOMER SERVICE CONTACT INFORMATION

AUSTRALIA P/ 1300 BISLEY (1300 247 539) F/ (02) 9316 4790 E/ bisley@gazal.com.au	WESTERN AUSTRALIA P/ (08) 6350 7900 F/ (08) 9258 7828 E/ bisleywa@gazal.com.au	NEW ZEALAND P/ 0800 142 722 F/ (09) 921 0093 E/ bisley@gazal.co.nz
--	--	--

QUALITY GUARANTEE

Bisley Workwear garments are sourced, manufactured and tested by independent laboratories, to Australian Standards which ensure consistency of product and workmanship. Each Bisley Workwear garment is labelled with a barcode and identifying order numbers (to meet AS/NZS 4602.1:2011) so we can quickly trace the production processes used to manufacture your product, identify the issue and resolve it immediately.

This exemplary quality control process allows us to replace any garment which does not meet your quality expectations once you return it to us for inspection.

CORPORATE IDENTIFICATION

The Bisley Workwear Product team can help you develop a corporate identity that sets you apart from the rest. We can monogram, embroider, heat transfer or screen print your company logo onto almost any piece of Bisley Workwear clothing. Contact our Customer Service team or your local Sales Representative for further information.

Corporate identification may also entitle you to claim a tax deduction for your business. The Bisley Workwear Product team can provide you with information to ensure tax deductibility on your wardrobe.

BACK ORDERS

Stock service goods will be kept on back order at the customer's request.

MINIMUM ORDER

Minimum 4 units per order policy, no surcharge.

CUSTOMER SERVICE HOURS

Sydney, Australia (8.15am - 5.00pm),
NZ (8.00am - 4.30pm), WA (8.00am - 4.30pm)

PRIORITY DELIVERY

For urgent deliveries, Bisley Workwear can provide a priority service where freight charges are calculated by size, weight, destination and speed of service required. Any additional charges are indicated on your order confirmation.

RETURNING PRODUCT

For all distributor initiated returns (where the customer has made an ordering mistake), a claim must be made within seven (7) days from receipt of the goods. An AUD\$20.00 (NZ\$10.00) handling fee will apply. Goods will only be accepted if they are in their original packaging and condition, free of any markings and damage. The customer will be required to pay for the freight back to the Bisley Workwear warehouse from which the goods were dispatched (Sydney/ Perth or Auckland). The original invoice number must be supplied before any claim can be processed.

WE WILL NOT ACCEPT THE RETURN OF GOODS IF

- Goods are damaged in the washing machine or dryer due to care instructions having not been followed correctly
- Goods suffering from normal wear and tear
- Goods that have been shop soiled or have discoloured due to lengthy periods of time in the store
- Goods that are discontinued products
- Goods that have had a customer-approved value-add, including embroidery, printing or custom taping

WE WILL CONSIDER CLAIMS FOR

- Goods damaged or lost in transit
- Goods that are faulty or defective as a result of faulty workmanship or materials

A Returns Authorisation Number (R.A.N.) must be obtained by contacting the Bisley Workwear Customer Service team who will explain the full returns process. Any goods sent without a R.A.N. will be returned to the customer at their cost. Bisley Workwear will accept freight charges on returned goods provided the return has been duly authorised by a company representative and the goods are returned via the carrier nominated by Bisley Workwear.



VOLUME 09

Bisley
WORKWEAR

WORKSTYLE

////////////////////

HEAD OFFICE AUSTRALIA

3 - 7 McPherson Street
BANKSMEADOW NSW 2019
SYDNEY, AUSTRALIA

T 1300 BISLEY (247 539)

F (02) 9316 4790

E bisley@gazal.com.au

W bisleyworkwear.com.au

WESTERN AUSTRALIA OFFICE

36A Tomah Road
WELSHPOOL WA 6106
AUSTRALIA

T (08) 6350 7900

F (08) 9258 7828

E bisleywa@gazal.com.au

W bisleyworkwear.com.au

NEW ZEALAND OFFICE

10 Kitson Place
ST JOHNS, AUCKLAND
NEW ZEALAND

T 0800 142 722

F (09) 527 4672

E bisley@gazal.co.nz

W bisleyworkwear.co.nz