

the  
LSJ  
collection

EDITION N°20



## GREY MICRO FIBRE

A



**A/424**  
Sleeveless dress with pockets

B



**B/650**  
Single button jacket with pockets  
  
**2995**  
Short sleeve semi fit button tab shirt  
  
**330**  
Feature panel front skirt

C



**C/8610**  
Slim cut business jacket  
  
**2010L**  
Classic cut long sleeve business shirt  
  
**1022**  
Flat front flex waist pant

Freshen up your corporate wear with our Silver Grey suiting. This stunning range is in our famous easy care Mechanical Stretch Micro Fibre (100% Polyester) in new fashion styles plus our best selling classics.

**A/2995**

Short sleeve semi fit  
button tab shirt

**175**

Skinny leg mid rise  
pant

**B/660**

Collarless jacket with  
pockets

**711**

Short sleeve pleat  
front knit top

**193**

Low rise relaxed leg  
pant with pockets



## BLACK MICRO FIBRE

A



**A/2172**

3/4 sleeve semi fitted curved front shirt

**329**

High rise ankle length pencil line skirt

B



**B/699**

Two button straight line jacket with pockets

**2162S**

Short sleeve easy fit action pleat shirt

**193**

Low rise relaxed leg pant with pockets

C



**C/200**

1/2 sleeve contrast shirt

**315**

Low rise kick pleat skirt



Stylish, sophisticated and easy care! Our Black Mechanical Stretch Micro Fibre (100% Polyester) has a beautifully soft peachskin finish and with a huge range of styles it truly is "every fit for everybody".



**A/422**  
Sleeveless semi fitted mid length dress

**B/2022L**  
Euro cut long sleeve contrast shirt

**1022**  
Flat front flex waist pant

**C/8612**  
Classic cut two button business jacket

**2010L**  
Classic cut long sleeve business shirt

**1022**  
Flat front flex waist pant

## NAVY MICRO FIBRE



**A/424**  
Sleeveless unlined dress with pockets



**B /420**  
Cap sleeve semi fitted mid length dress



**C/422**  
Sleeveless semi fitted mid length dress

**203**  
Short sleeve pleat front shirt with  
placket trim

Our easy care Navy Mechanical Stretch Micro Fibre (100% Polyester) is an instant classic. With a beautifully soft peachskin finish in styles to suit all shapes and sizes, it is a guaranteed winner with staff.



**A/2175**  
Cap sleeve semi fitted shirt

**310**  
Fluted 6 panel skirt



**B/250**  
Sleeveless covered placket shirt

**195K**  
Low rise capri pants with pockets

**C/711**  
Short sleeve pleat front knit top

**199**  
Low rise tailored short with pockets

# NAVY MICRO FIBRE & WOOL FAILLE



**A/V65**  
Semi fitted vest with pockets  
(Not available in Wool Faille)

**2172**  
¾ sleeve semi fitted curved  
front shirt

**175**  
Skinny leg mid rise pant  
(Not available in Wool Faille)



**B/650**  
Single button jacket with pockets  
(Not available in Wool Faille)

**203**  
Short sleeve pleat front shirt with  
placket trim

**181**  
Mid rise bootleg pant



**C/8612**  
Standard cut two button  
business jacket

**2022L**  
Euro cut long sleeve shirt

**1021**  
Twin pleat pant



**A/709**

Keyhole neck and banded hem knit top

**197**Easy fit pull on elastic waist pants with pockets  
(Not available in Wool Faille)**B/2022L**

Euro cut long sleeve contrast shirt

**1022**

Flat front flex waist pant

## CHARCOAL WOOL FAILLE

A



B



**A/200**  
1/2 sleeve contrast shirt  
**189**  
Straight leg flex waist pant  
with pockets

**B/709**  
Keyhole neck and banded  
hem knit top  
**181**  
Mid rise bootleg pant



Our premium quality Charcoal Australian Merino Wool Faille Stretch (59% Wool/ 39% Poly /2% Lycra) is your modern corporate essential. It has a luxurious finish while still delivering the strength and durability needed for corporate wear. All garments are lined for comfort.

A



C



D



B



**A/650**  
Single button jacket with pockets

**203**  
Short sleeve pleat front shirt with placket trim

**3005**  
Bandless slim fit knee skimming skirt

**B/2022L**  
Euro cut long sleeve contrast shirt

**1022**  
Flat front flex waist pant

**C/620**  
Four button fitted jacket

**203**  
Short sleeve pleat front shirt with placket trim

**319**  
High rise mid length pencil line skirt

**D/8612**  
Classic cut two button business jacket

**2022L**  
Euro cut long sleeve shirt

**1021**  
Twin pleat pant



# HEALTH CARE



**A/200**  
1/2 sleeve contrast shirt

**174K**  
Low rise skinny leg pant with pockets



**B/203**  
Short sleeve pleat front shirt with  
placket trim

**375K**  
Low rise kick pleat skirt with pockets



This Navy Poly/Viscose Mechanical Stretch (80% Poly/ 20% Viscose) range is a must have for the healthcare sector. Available in a wide range of styles that has something for everyone from fashion inspired low rise narrow leg pants to fuller fit elastic and hidden flex waists.



**C/2022L**  
Euro cut long sleeve contrast shirt

**1021**  
Twin pleat pant



## NAVY POLY/VISCOSE



**A/2172**  
¾ sleeve semi fitted curved  
front shirt

**193K**  
Low rise relaxed leg pant with  
pockets

**B/2162S**  
Short sleeve easy fit action pleat shirt

**189K**  
Straight leg flex waist pant with  
pockets

**C/222**  
Short sleeve fitted peak front shirt

**195K**  
Low rise capri pants with pockets

## HEALTH CARE



**A/200**  
½ sleeve contrast shirt

**375K**  
Low rise kick pleat skirt with pockets

**WB412**  
V-neck shaped vest



**B/203**  
Short sleeve pleat front shirt with placket trim

**174K**  
Low rise skinny leg pant with pockets

**C/2022L**  
Euro cut long sleeve contrast shirt

**1022**  
Flat front flex waist pant

Our Black Mechanical Stretch (100% Polyester) is durable, easy care and a great option for your uniform requirements. Featuring our bestselling healthcare pants and skirts as well as an office jacket to continue the same uniform range for administration and corporate areas.



# BLACK MECHANICAL STRETCH

A



B



C

**A/711**

Short sleeve pleat front knit top

**197K**

Easy fit pull on elastic waist pants with pockets

**B/2166**

Short sleeve reverse collar easy fit action pleat shirt

**171K**

Straight leg mid rise pant with flex waist and pockets

B

**C/653**

Single button semi fitted jacket

**709**

Keyhole neck and banded hem knit top

**173K**

Mid rise straight leg pant with pockets



## HEALTH CARE



**A/222**  
Short sleeve fitted peak front shirt

**375K**  
Low rise kick pleat skirt with pockets



**B/2162S**  
Short sleeve easy fit action pleat shirt

**197K**  
Easy fit pull on elastic waist pants with pockets

**C/2010L**  
Standard cut long sleeve shirt

**1022**  
Flat front flex waist pant



Our Charcoal Mechanical Stretch (100% Polyester) is durable, easy care and a great option for your uniform requirements. Featuring our bestselling healthcare pants and skirts as well as an office jacket to continue the same uniform range for administration and corporate areas.





## CHARCOAL MECHANICAL STRETCH



**A/280**  
Short sleeve pleat front shirt

**173K**  
Mid rise straight leg pant with pockets



**B/653**  
Single button semi fitted jacket

**206S**  
Short sleeve round neck pleated front shirt

**379**  
High rise pencil line skirt with front button tab feature



**C/WB410**  
Single button semi fitted cardigan

**2162S**  
Short sleeve easy fit action pleat shirt

**171K**  
Straight leg mid rise pant with flex waist and pockets

# PHARMACY

Classic men's and ladies Pharmacy jackets in hard wearing White Lusterlene (65% Poly/ 35% Viscose)



**A/9035**  
Short sleeve semi fitted jacket with pockets



**B/9105**  
Short sleeve side stud jacket with pockets



A



# MINI CHECK

A versatile uniform shirt option with a fine blue/white Mini Check (65% Poly / 35% Cotton) which will always look sharp.

B



**A/2012L**

Full cut long sleeve shirt

**B/224**

Short sleeve reverse collar shirt



# GINGHAM CHECK

New Cotton Rich Gingham Check (60% Cotton/ 40% Polyester) is a modern statement for your uniform. Hide or show off the contrasting inner collars and cuffs as you feel!

**2022L/2010L**  
Gingham Cherry



A



**A/200**  
Gingham Cherry

B



**D/2022L/2010L**  
Gingham Black

SHIRTS

C



**C/2022L/2010L**  
Gingham Blue

D





END ON  
END

**2022L/2010L**  
End on End  
Charcoal



A



**A/2022L/2010L**  
End on End  
Cherry

**B/2022L/2010L**  
End on End  
Plum

**C/2022L/2010L**  
End on End  
Navy

New Cotton Rich End on End Plain (60% Cotton/ 40% Polyester) are available in a great range of eye catching colours and feature contrasting inner collars and cuffs designed to co-ordinate with our Lonsdale Check for a mix and match uniform range.

B



C



CHE - Cherry  
PLU - Plum  
NVY - Navy  
CHA - Charcoal



END ON  
END

A



B



**A/200**  
End on End  
Navy

**B/200**  
End on End  
Plum





*Fold cuff up for  
more contrast!*

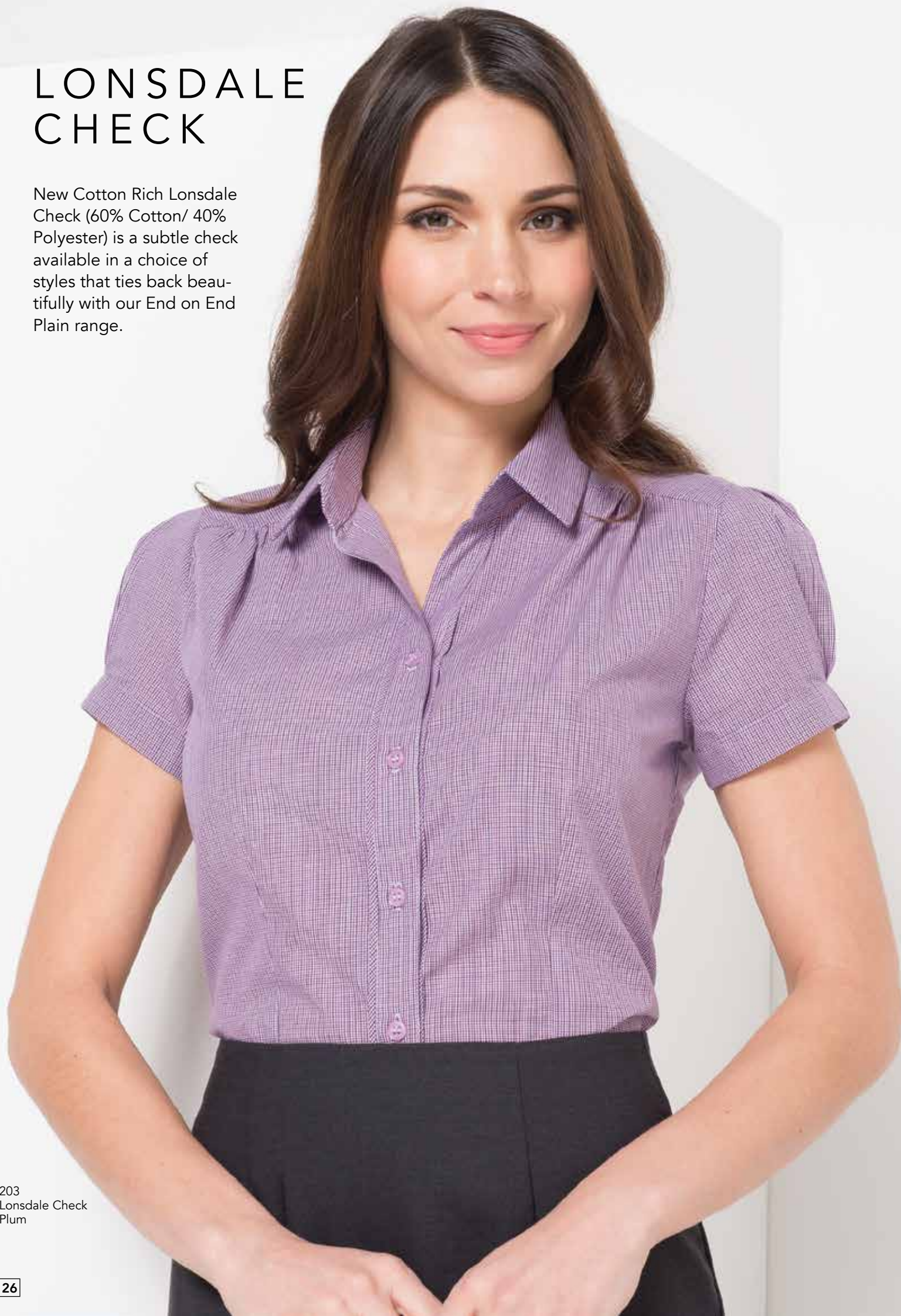


**A/200**  
End on End  
Charcoal

**B/200**  
End on End  
Cherry

# LONSDALE CHECK

New Cotton Rich Lonsdale Check (60% Cotton/ 40% Polyester) is a subtle check available in a choice of styles that ties back beautifully with our End on End Plain range.



203  
Lonsdale Check  
Plum



A



B



**A/203**  
Lonsdale Check  
Blue

**B/2010L/2022L**  
Lonsdale Check  
Charcoal

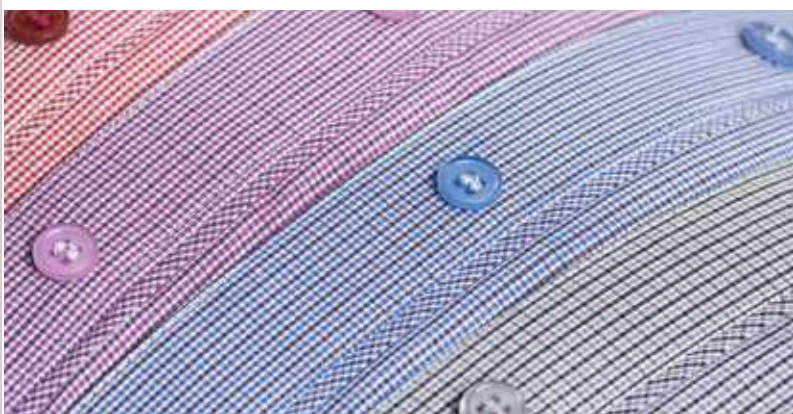
**C/203**  
Lonsdale  
Charcoal

**D/2022L/2010L**  
Lonsdale Check  
Cherry

C



D



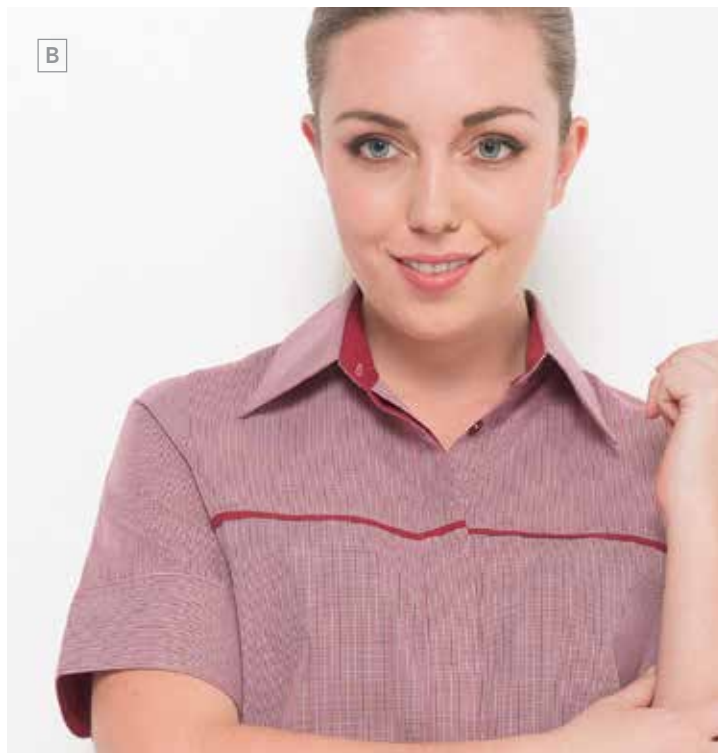


# LONSDALE CHECK



**208**  
Lonsdale Check  
Blue

*Fold cuff up for  
more contrast!*



**A/208**  
Lonsdale  
Check Blue

**B/208**  
Lonsdale  
Check Cherry

**C/208**  
Lonsdale  
Check Plum

**D/208**  
Lonsdale Check  
Charcoal





A



# BOURKE STREET STRIPE

A deluxe cotton rich (55% Cotton/ 45% Polyester) textured stripe in a range of styles and fits.

B



**A/299S**  
Bourke Street Wisteria

**B/2166**  
Bourke Street Wisteria



B



A



BLU – White/Blue  
WIS – Wisteria/Charcoal



**A/2172**  
Bourke Street Blue

**B/2010S**  
Bourke Street Wisteria  
Also available in 2010L  
Men's long sleeve shirt

# SHADOW STRIPE

Hard working and easy care, this unique Yarn Dye Shadow Stripe (65% Polyester/35% Cotton) is a sophisticated option for hospitality, in the office or as a casual shirt.



TEA - Teal/Silver  
WHT - White/Black  
BLK - Black/Taupe  
PEP - Pepper/Black



**A/2172**  
Shadow Stripe White

**B/2010L**  
Shadow Stripe White



A



# COLLINS STREET STRIPE

Collins Street Stripe (65% Polyester/ 35% Cotton) works perfectly with almost any suiting and is a smart, subtle corporate option.

C



B



**A/299S**  
Collins Street  
White/Grey

**B/299L**  
Collins Street  
White/Grey

**C/2010L**  
Collins Street  
White/Grey



**WHG** – White/Grey

# SORRENTO KNIT

New soft drape Sorrento Knit (92% Polyester/ 8% Spandex) is available in gorgeous fashion styles and is comfortable for all day wear but still durable enough to be a key uniform piece.



**709**  
Knit Red



A



B



C



D



A/711  
Knit Black

B/709  
Knit Black

C/709  
Knit Navy

D/ 711  
Knit Red

# BLOSSOM PRINT

Breathable Polyester Blossom print is a soft feminine print available in vibrant colours that co-ordinate beautifully with our Freedom Plains range for a comprehensive uniform range.

A



**A/280**  
Blossom Teal  
(Print 22)

B



C



**B/2172**  
Blossom Navy  
(Print 21)

**C/2166**  
Blossom Red  
(Print 20)



A



**A/222**  
Breeze  
White/Teal  
(Print 53)

**B/2172**  
Breeze  
Navy/White  
(Print 52)

**C/2162S**  
Breeze  
White/Blue  
(Print 50)

**D/222**  
Breeze  
Blue/White  
(Print 51)

C



# BREEZE PRINT

Soft and sophisticated Breeze print in Breathable Polyester is one of our most popular shirtings. Available in 4 different colour ways and a range of styles, there is something for everyone.

B



D



# WAVE PRINT

The Wave print is a subtle design available in our soft and durable Breathable Polyester in rich colours and wide choice of styles.

A



**A/21625**  
Wave Red  
(Print 30)

B



C



**B/2172**  
Wave Blue  
(Print 32)

**C/222**  
Wave Navy  
(Print 31)



# DOT PRINT

Classic Dot print in our Breathable Polyester works beautifully with almost any suiting colour and is available in a wide range of colours and styles.

A



**A/2172**  
Dot Blue (Print 41)

B



**B/222**  
Dot Red (Print 40)

C



**C/2162S**  
Dot Teal (Print 42)

# FREEDOM PLAIN

Breathable Polyester

A



B



C



*Every fit, every body...*

D



E



F



**A/206S**  
Freedom Charcoal

**B/250**  
Freedom Blast

**C/2172**  
Freedom Harbour

**D/2162S**  
Freedom White

**E/2175**  
Freedom Pepper

**F/222**  
Freedom Periwinkle



A



# FREEDOM STRIPE

Bold statement stripe in our soft drape Breathable Polyester creates a smart, professional image and is easy care.

SHIRTS

B



C



**A/2172**  
Freedom Stripe Navy

**B/222**  
Freedom Stripe Taupe

**C/2162S**  
Freedom Stripe Cherry

A



# SHAKER

A unique fabric that combines the elegance of a satin yarn with permanent pleating that creates a stylish finish. Shaker brings the added bonus of a Lycra stretch and is easy care.

B



**A/2172**  
Shaker White

**B/2172**  
Shaker Black



A



# BLACK KNITWEAR

A beautiful range of soft handle knitwear (50% Wool/50% Acrylic) with fashion styling.

B



## A/WB412

Ladies V-neck vest

## B/WB410

Ladies single button cardigan

# CHARCOAL KNITWEAR

A beautiful range of soft handle knitwear (50% Wool/50% Acrylic) with fashion styling



**A/WB410**  
Ladies Single Button  
Cardigan



**B/WB412**  
Ladies V-neck vest

**C/WB62**  
Unisex V-neck Vest

**D/WB60**  
Unisex V-neck Jumper





# NAVY KNITWEAR

A beautiful range of soft handle knitwear (50% Wool/50% Acrylic) with fashion styling

A



**A/WB412**  
Ladies V-neck Vest

B



**B/WBV1**  
Long Line Button Up  
Cardigan

C



**C/WB410**  
Single Button  
Cardigan

**D/WB60**  
Unisex V-neck  
Jumper

**E/WB62**  
Unisex Vest

**F/WBV2**  
Ladies Long Line  
Button Up Vest

D

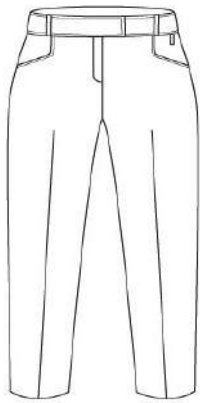


E



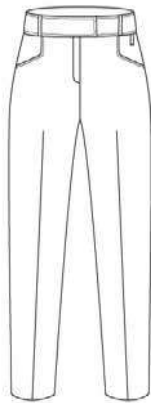
F



**171K***Keyloop mid rise flex waist***Size Chart - 171K\***

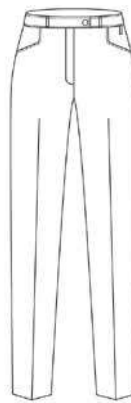
14	16	18	20	22	24	26
45	47.5	50	52.5	55	57.5	60

**Mech Stretch (ME)**  
Black, Charcoal

**Pg 15,17****173K***Keyloop mid rise straight leg***Size Chart - 173K**

6	8	10	12	14	16	18
34.5	37	39.5	42	44.5	47	49.5

**Mech Stretch (ME)**  
Black, Charcoal

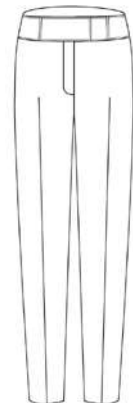
**Pg 15,17****174K***Keyloop low rise skinny leg***Size Chart - 174K**

6	8	10	12	14	16	18	20
37	39.5	42	44.5	47	49.5	52	54.5

**Mech Stretch (ME)**  
Black, Charcoal

**Pg 14**

**Poly/Viscose (MG)**  
Navy

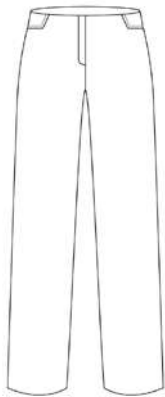
**Pg 12****175***Mid rise skinny leg***Size Chart - 175**

6	8	10	12	14	16	18	20
35	37.5	40	42.5	45	47.5	50	52.5

**Micro Fibre (MF)**  
Black, Grey, Navy

**Pg 3, 8**

\* Relaxed waist measurement given. Add 2.5cm for max waist stretch measurement.

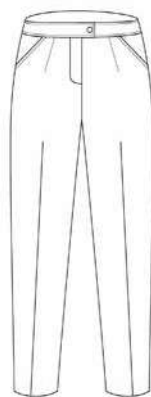
**181***Mid rise bootleg***Size Chart - 181**

6	8	10	12	14	16	18	20
35	37.5	40	42.5	45	47.5	50	52.5

**Micro Fibre (MF)**  
Black, Navy

**Pg 8**

**Wool Faille (FA)**  
Charcoal, Navy

**Pg 10****189***Straight leg flex waist***Size Chart - 189\***

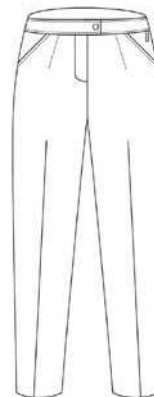
6	8	10	12	14	16	18	20	22
35.5	38	40.5	43	45.5	48	50.5	53	55.5

**Micro Fibre (MF)**  
Black, Grey, Navy

**Wool Faille (FA)**  
Charcoal, Navy

**Pg 10**

\* Relaxed waist measurement given. Add 2.5cm for max waist stretch measurement.

**189K***Keyloop straight leg flex waist***Size Chart - 189K\***

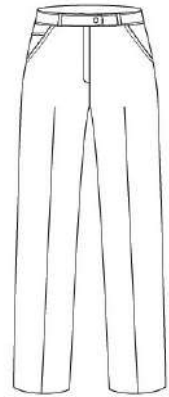
6	8	10	12	14	16	18	20	22
35.5	38	40.5	43	45.5	48	50.5	53	55.5

**Mech Stretch (ME)**  
Black, Charcoal

**Poly/Viscose (MG)**  
Navy

**Pg 13**

\* Relaxed waist measurement given. Add 2.5cm for max waist stretch measurement.

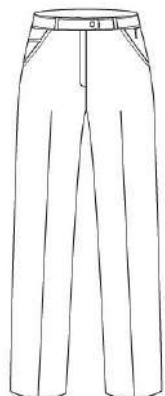
**193***Low rise relaxed leg***Size Chart - 193**

6	8	10	12	14	16	18	20
35	37.5	40	42.5	45	47.5	50	52.5

**Micro Fibre (MF)**  
Black, Grey, Navy

**Pg 3, 4**

**Wool Faille (FA)**  
Charcoal

**193K***Keyloop low rise relaxed leg***Size Chart - 193K**

6	8	10	12	14	16	18	20
35	37.5	40	42.5	45	47.5	50	52.5

**Poly/Viscose (MG)**  
Navy

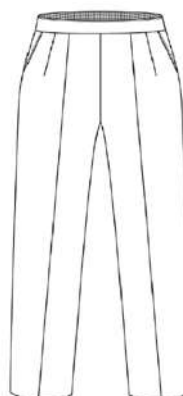
**Pg 13****195K***Keyloop 3/4 length capri pant***Size Chart - 195K**

6	8	10	12	14	16	18	20	22
34.5	37	39.5	42	44.5	47	49.5	52	54.5

**Micro Fibre (MF)**  
Black, Navy

**Pg 7**

**Poly/Viscose (MG)**  
Navy

**Pg 13****197***Pull on easy fit pant***Size Chart - 197\***

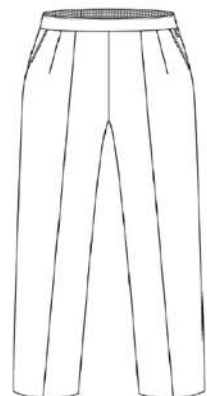
14	16	18	20	22	24	26	28
44.5	47	49.5	52	54.5	57	59.5	62

**Micro Fibre (MF)**  
Black, Grey, Navy

**Pg 9**

**Wool Faille (FA)**  
Charcoal

\* Relaxed waist measurement given. Add 10cm for max waist stretch measurement.

**197K***Keyloop pull on easy fit pant***Size Chart - 197K\***

14	16	18	20	22	24	26	28
44.5	47	49.5	52	54.5	57	59.5	62

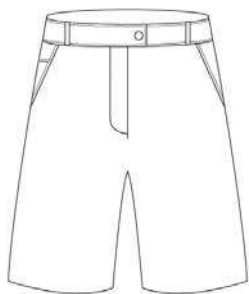
**Mech Stretch (ME)**  
Black, Charcoal

**Pg 15, 16**

**Poly/Viscose (MG)**  
Navy

\* Relaxed waist measurement given. Add 10cm for max waist stretch measurement.

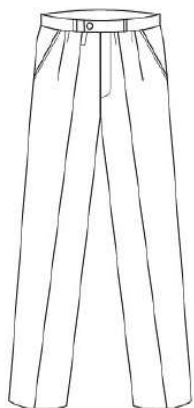


**199***Low rise short***Size Chart - 199**

6	8	10	12	14	16	18
35	37.5	40	42.5	45	47.5	50

**Micro Fibre (MF)**

Navy

**Pg 7****1021R***Twin pleat pant (regular fit)***Size Chart - 1021R**

77	82	87	92	97	102
38.5	41	43.5	46	48.5	51

**Micro Fibre (MF)**

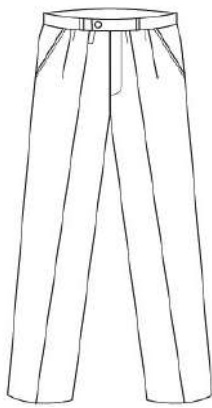
Navy

**Pg 8****Poly/Viscose (MG)**

Navy

**Pg 12****Wool Faille (FA)**

Charcoal, Navy

**Pg 11****1021S***Twin pleat pant (stout fit)***Size Chart - 1021S**

87	92	97	102	107	112	117
43.5	46	48.5	51	53.5	56	58.5

**Micro Fibre (MF)**

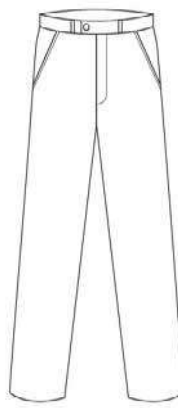
Navy

**Pg 8****Poly/Viscose (MG)**

Navy

**Pg 12****Wool Faille (FA)**

Charcoal, Navy

**Pg 11****1022R***Flex waist pant (regular fit)***Size Chart - 1022R**

77	82	87	92	97	102
38.5	41	43.5	46	48.5	51

**Mech Stretch (ME)**

Black, Charcoal

**Pg 14, 16****Micro Fibre (MF)**

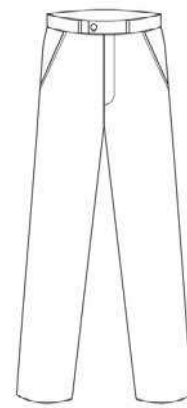
Black, Grey, Navy

**Pg 2, 5****Poly/Viscose (MG)**

Navy

**Wool Faille (FA)**

Charcoal, Navy

**Pg 9,11****1022S***Flex waist pant (stout fit)***Size Chart - 1022S**

87	92	97	102	107	112	117
43.5	46	48.5	51	53.5	56	58.5

**Mech Stretch (ME)**

Black, Charcoal

**Pg 14, 16****Micro Fibre (MF)**

Black, Grey, Navy

**Pg 2, 5****Poly/Viscose (MG)**

Navy

**Wool Faille (FA)**

Charcoal, Navy

**Pg 9,11**

All measurements are of the half chest of garment &amp; in centimetres

**200***1/2 sleeve semi fitted shirt***Size Chart - 200**

6	8	10	12	14	16	18	20	22
45	47.5	50	52.5	55	57.5	60	63	66

**End on End Plain (EE)**

Charcoal, Cherry, Navy, Plum

**Pg 10, 12, 14, 24, 25****Gingham Check (GI)**

Black, Blue, Cherry

**Pg 4,21****203***Short sleeve pleat front shirt***Size Chart - 203**

6	8	10	12	14	16	18
47	49.5	52	54.5	57	59.5	62

**Lonsdale Check (LO)**

Charcoal, Cherry, Navy, Plum

**Pg 6, 8, 11, 12, 14, 26, 27****206S***Pleated round neck shirt***Size Chart - 206S**

6	8	10	12	14	16	18	20	22
42.5	45	47.5	50	52.5	55	57.5	60.5	64

**Freedom Plain (PL)**

Blast, Charcoal, Harbour, Pepper, Periwinkle

**Pg 17, 40**

**208***1/2 sleeve easy fit piping shirt***Size Chart - 208**

8	10	12	14	16	18	20	22	24
51	53.5	56	58.5	61	63.5	66	68.5	71

**Lonsdale Check (LO)**

Charcoal, Cherry, Navy, Plum

**Pg 28, 29****222***Short sleeve fitted sit out shirt***Size Chart - 222**

6	8	10	12	14	16	18	20
46	48.5	51	53.5	56	58.5	61.5	64.5

**Breeze Print (BR)**

White/Blue (P50), Blue/White (P51), Navy/Blue (P52), White/Aqua (P53)

**Pg 16, 37****Dot Print (DO)**

Red (P40), Blue (P41), Teal (P42)

**Pg 39****Freedom Plain (PL)**

Blast, Harbour, Pepper, Periwinkle, White

**Pg 13, 40****Freedom Stripe (FS)**

Cherry, Navy, Taupe

**Pg 41****Wave Print (WA)**

Red (P30), Navy (P31), Blue (P32)

**Pg 38****224***Short sleeve revere collar shirt***Size Chart - 224**

8	10	12	14	16	18	20	22	24
47	49.5	52	54.5	57	61	64.5	68	71.5

**Mini Check (SC)**

Blue

**Pg 19****250***Sleeveless semi fitted shirt***Size Chart - 250**

8	10	12	14	16	18
45	47.5	50	52.5	55	57.5

**Freedom Plain (PL)**

Blast, Harbour, Pepper, Periwinkle

**Pg 7, 40****280***Short sleeve semi fitted pleat front shirt***Size Chart - 280**

6	8	10	12	14	16	18
47	49.5	52	54.5	57	59.5	62

**Blossom Print (BL)**

Red (P20), Navy (P21), Teal (P22)

**Pg 17, 36****299L***Long sleeve semi fitted shirt***Size Chart - 299L**

6	8	10	12	14	16	18	20	22	24	26
45	47.5	50	52.5	55	57.5	60	63	66	69	72

**Collins Street Stripe (CS)**

White/Grey

**Pg 33****299S***Short sleeve semi fitted button tab shirt***Size Chart - 299S**

6	8	10	12	14	16	18	20	22	24	26
45	47.5	50	52.5	55	57.5	60	63	66	69	72

**Bourke Street Stripe (BK)**

White/Blue, Wisteria/Charcoal

**Pg 2, 3, 30****Collins Street Stripe (CS)**

White/Grey

**Pg 33****2162S***Short sleeve easy fit action pleat shirt***Size Chart - 2162S**

6	8	10	12	14	16	18	20	22	24	26	28
48.5	51	53.5	56	58.5	61	63.5	65	69	72	75.5	79

**Breeze Print (BR)**

White/Blue (P50), Blue/White (P51), Navy/Blue (P52), White/Aqua (P53)

**Pg 13, 37****Dot Print (DO)**

Red (P40), Blue (P41), Teal (P42)

**Pg 17, 39****Freedom Plain (PL)**

Blast, Charcoal, Harbour, Pepper, Periwinkle, White

**Pg 4, 16, 40****Freedom Stripe (FS)**

Cherry, Navy, Taupe

**Pg 41****Wave Print (WA)**

Red (P30), Navy (P31), Blue (P32)

**Pg 38****2166***Short sleeve easy fit action pleat shirt***Size Chart - 2166**

6	8	10	12	14	16	18	20	22	24	26
48.5	51	53.5	56	58.5	61	63.5	66	69.5	73	76.5

**Blossom Print (BL)**

Red (P20), Navy (P21), Teal (P22)

**Pg 15, 36****Bourke Street Stripe (BK)**

White/Blue, Wisteria/Charcoal

**Pg 30**



**2172***3/4 sleeve semi fitted shirt***Size Chart - 2172**

6	8	10	12	14	16	18	20	22
45	47.5	50	52.5	55	57.5	60	65.5	68.5

**Blossom Print (BL)**White/Blue, Wisteria/Charcoal  
Red (P20), Navy (P21), Teal (P22)**Pg 36****Bourke Street Stripe (BK)**

White/Blue, Wisteria/Charcoal

**Pg 31****Breeze Print (BR)**White/Blue (P50), Blue/White (P51),  
Navy/Blue (P52), White/Aqua (P53)**Pg 13, 37****Dot Print (DO)**

Red (P40), Blue (P41), Teal (P42)

**Pg 39****Freedom Plain (PL)**

Blast, Charcoal, Harbour, Pepper, Periwinkle

**Pg 40****Freedom Stripe (FS)**

Cherry, Navy, Taupe

**Pg 8, 41****Shaker (SH)**

Black, White

**Pg 4, 42****Wave Print (WA)**

Red (P30), Navy (P31), Blue (P32)

**Pg 38****2172***3/4 sleeve semi fitted shirt***Size Chart - 2172**

6	8	10	12	14	16	18	20	22	24	26
45	47.5	50	52.5	55	57.5	60	65.5	68.5	71.5	74.5

**Shadow Stripe (SS)**

Black/Taupe, Pepper/Black, Teal/Black, White/Black

**Pg 32****2175***Cap sleeve semi fitted shirt***Size Chart - 2175**

6	8	10	12	14	16	18
45.5	48	50.5	53	55.5	58	60.5

**Freedom Plain (PL)**

Blast, Harbour, Pepper, Periwinkle

**Pg 7, 40****709***Long line keyhole neck banded hem top***Size Chart - 709**

8	10	12	14	16	18	20	22
51	53.5	56	58.5	61	63.5	65	69

**Sorrento Knit (KN)**

Black, Navy, Red

**Pg 9, 10, 15, 34, 35****711***Round neck pleat front top***Size Chart - 711**

8	10	12	14	16	18	20	22
45	47.5	50	52.5	55	57.5	60	62.5

**Sorrento Knit (KN)**

Black, Navy, Red

**Pg 3, 7, 15, 35**

All measurements are of the half chest of garment & in centimetres

2010L

Long sleeve classic cut shirt



Size Chart - 2010L

38	40	42	44	46	48	50
58	60.5	63	65.5	68	70.5	73

**Bourke St Stripe (BK)** Pg 2  
White/Blue, Wisteria/Charcoal

**Collins St Stripe (CS)** Pg 33  
White/Grey

**End on End Plain (EE)\***  
Charcoal, Cherry, Navy, Plum

**Gingham Check (GI)\***  
Black, Blue, Cherry

**Lonsdale Check (LO)\***  
Charcoal, Cherry, Navy, Plum

**Shadow Stripe (SS)** Pg 5, 16, 32  
Black/Taupe, Pepper/Black,  
Teal/Black, White/Black

\* Sizes for these fabrics are only available in  
size 44 up to 48

2010S\*

Short sleeve classic cut shirt



Size Chart - 2010S

38	40	42	44	46	48
58	60.5	63	65.5	68	70.5

**Bourke St Stripe (BK)** Pg 31  
White/Blue,  
Wisteria/Charcoal

\* Any of our long sleeve shirts can be cut  
down to short sleeve on request (surcharges  
may apply)

2012L

Long sleeve full cut shirt



Size Chart - 2012L

38	40	42	44	46	48
58	60.5	63	65.5	68	70.5

**Mini Check (SC)** Pg 19  
Blue

2022L

Long sleeve euro cut shirt



Size Chart - 2022L

S	M	L	XL	2XL
53	55.5	58	60.5	63

**End on End Plain (EE)** Pg 11, 12, 22, 23  
Charcoal, Cherry, Navy, Plum

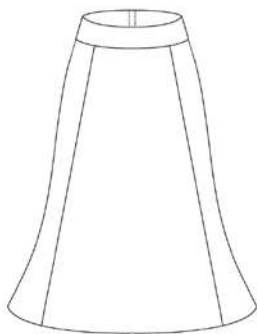
**Gingham Check (GI)** Pg 5, 9, 14, 20, 21  
Black, Blue, Cherry

**Lonsdale Check (LO)** Pg 8, 11, 27  
Charcoal, Cherry, Navy, Plum

All measurements are of the half waist of garment & in centimetres

310

6 panel mid length skirt



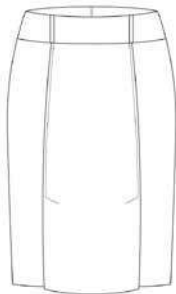
Size Chart - 310

6	8	10	12	14	16	18	20	22
32.5	35	37.5	40	42.5	45	47.5	50	52.5

**Micro Fibre (MF)** Pg 7  
Navy

315

Kick pleat low rise skirt



Size Chart - 315

6	8	10	12	14	16	18	20
37	39.5	42	44.5	47	49.5	52	54.5

**Micro Fibre (MF)** Pg 4  
Black, Grey, Navy  
**Wool Faille (FA)**  
Charcoal

319

Mid length high rise skirt



Size Chart - 319

6	8	10	12	14
32.5	35	37.5	40	42.5

**Micro Fibre (MF)** Pg 11  
Black, Navy  
**Wool Faille (FA)**  
Charcoal, Navy

319D

Mid length semi elastic skirt



Size Chart - 319D\*

16	18	20	22	24
42.5	45	47.5	50	52.5

**Micro Fibre (MF)**  
Black, Navy  
**Wool Faille (FA)**  
Charcoal, Navy

\* Relaxed waist measurement given. Add  
2.5cm for max waist stretch measurement.



**329***Ankle length high rise skirt***Size Chart - 329**

6	8	10	12	14
32.5	35	37.5	40	42.5

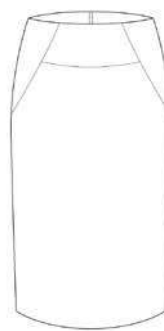
**Micro Fibre (MF)**  
Black, Navy

**Pg 4****329D***Ankle length semi elastic skirt***Size Chart - 329D\***

16	18	20	22	24
42.5	45	47.5	50	52.5

**Micro Fibre (MF)**  
Black, Navy

\* Relaxed waist measurement given. Add  
2.5cm for max waist stretch measurement.

**330***Panel front high rise skirt***Size Chart - 330**

6	8	10	12	14	16	18
34.5	37	39.5	42	44.5	47	49.5

**Micro Fibre (MF)**  
Grey

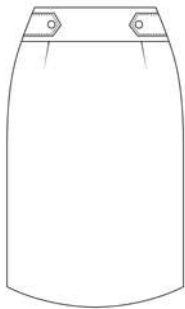
**Pg 2****375K***Keyloop kick pleat pocket skirt***Size Chart - 375K**

6	8	10	12	14	16	18	20
37	39.5	42	44.5	47	49.5	52	54.5

**Mech Stretch (ME)**  
Black, Charcoal

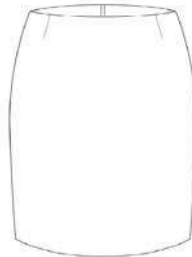
**Pg 14, 16**

**Poly/Viscose (MG)**  
Navy

**Pg 12****379***Button feature high rise skirt***Size Chart - 379**

6	8	10	12	14	16	18	20	22
36.5	38.5	41	43.5	46	48	50	52	54

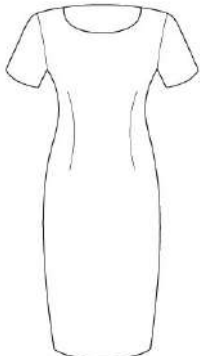
**Mech Stretch (ME)**  
Black, Charcoal

**Pg 17****3005***Low rise knee skimming skirt***Size Chart - 3005**

6	8	10	12	14	16	18
31	33.5	36	38.5	41	43.5	46

**Micro Fibre (MF)**  
Black, Navy

**Wool Faille (FA)**  
Charcoal, Navy

**Pg 11****420***Cap sleeve semi fitted dress***Size Chart - 420**

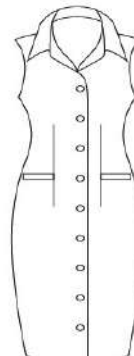
6	8	10	12	14	16	18
46.5	49	51.5	54	56.5	59	61.5

**Micro Fibre (MF)**  
Black, Navy

**Pg 6****422***Sleeveless semi fitted dress***Size Chart - 422**

6	8	10	12	14	16	18
41	43.5	46	48.5	51	53.5	56

**Micro Fibre (MF)**  
Black, Navy

**Pg 5, 6****424***Unlined semi fitted dress***Size Chart - 424**

6	8	10	12	14	16	18
40	42.2	45	47.5	50	52.5	55

**Micro Fibre (MF)**  
Grey, Navy

**Pg 2, 6**

**620***4 button short line fitted jacket***Size Chart - 620**

6	8	10	12	14	16	18	20
42.5	45	47.5	50	52.5	55	57.5	60

**Micro Fibre (MF)**

Black, Navy

**Wool Faille (FA)**

Charcoal, Navy

**Pg 11****650***Single button semi fitted pocket jacket***Size Chart - 650**

6	8	10	12	14	16	18	20	22	24	26
43	45.5	48	50.5	53	56	59	62	65	68	71

**Micro Fibre (MF)**

Black, Grey, Navy

**Wool Faille (FA)**

Charcoal

**Pg 2, 8****Pg 11****653***Single button semi fitted jacket***Size Chart - 653**

6	8	10	12	14	16	18	20	22	24	26
43	45.5	48	50.5	53	56	59	62	65	68	71

**Mech Stretch (ME)**

Black, Charcoal

**Pg 15, 17****660***Collarless semi fitted pocket jacket***Size Chart - 660**

6	8	10	12	14	16	18	20
42.5	45	47.5	50	52.5	55.5	58.5	61.5

**Micro Fibre (MF)**

Grey

**Pg 3****699***2 button long line pocket jacket***Size Chart - 699**

6	8	10	12	14	16	18	20	22	24	26
43	45.5	48	50.5	53	55.5	58	60.5	63	65.5	68

**Micro Fibre (MF)**

Black, Navy

**Wool Faille (FA)**

Charcoal, Navy

**Pg 4****V65***Suiting vest with pockets***Size Chart - V65**

6	8	10	12	14	16	18	20	22	24
41	43.5	46	48.5	51	53.5	56	58.5	61	63.5

**Micro Fibre (MF)**

Black, Navy

**Pg 8****8610***2 button slim cut jacket***Size Chart - 8610\***

38	40	42	44	46	48
50.5	53	55.5	58	60.5	63

**Micro Fibre (MF)**

Grey

\* Jacket only available in a Regular fit

**Pg 2****8612***2 button classic cut jacket***Size Chart - 8612\***

38	40	42	44	46	48
55.5	58	60.5	63	65.5	68

**Micro Fibre (MF)**

Black, Navy

**Wool Faille (FA)**

Charcoal, Navy

\* Jacket available in a Short, Regular and Long fit

**Pg 5, 8****Pg 11**



**910S***Men's side stud jacket***Size Chart - 910S**

3	4	5	6	7	8	9
(36)	(38)	(40)	(42)	(44)	(46)	(48)
54	56.5	59	61.5	64	66.5	69

Lusterlene (LU)  
White**Pg 18****903S***Ladies semi fitted centre button jacket***Size Chart - 903S**

8	10	12	14	16	18	20
48.5	51	53.5	56	58.5	61	63.5

Lusterlene (LU)  
White**Pg 18****WB410***Ladies single button revere cardigan***Size Chart - WB410**

XS	S	M	L	XL	2XL
43	45.5	48	50.5	53	55.5

Wool Blend (WB)  
Black, Charcoal, Navy**Pg 17, 43, 44, 45****WB412***Ladies shaped v-neck vest***Size Chart - WB412**

XS	S	M	L	XL	2XL
43	45.5	48	50.5	53	55.5

Wool Blend (WB)  
Black, Charcoal, Navy**Pg 14, 43, 44, 45****WB60***Unisex v-neck jumper***Size Chart - WB60**

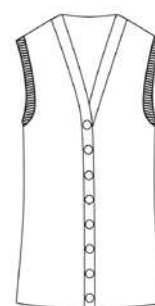
XS	S	M	L	XL	2XL
48.5	51	53.5	56	58.5	61

Wool Blend (WB)  
Charcoal, Navy**Pg 44, 45****WB62***Unisex v-neck vest***Size Chart - WB62**

XS	S	M	L	XL	2XL
48.5	51	53.5	56	58.5	61

Wool Blend (WB)  
Charcoal, Navy**Pg 44, 45****WBV1***Ladies long line button up cardigan***Size Chart - WBV1**

2XS	XS	S	M	L	XL	2XL	3XL	4XL
44.5	47	49.5	52	54.5	57	59.5	62	64.5

Wool Blend (WB)  
Navy**Pg 45****WBV2***Ladies long line button up vest***Size Chart - WBV2**

2XS	XS	S	M	L	XL	2XL	3XL	4XL
43.5	46	48.5	51	53.5	56	58.5	63.5	66

Wool Blend (WB)  
Navy**Pg 45**

# CUSTOM MAKE SERVICE

Your business is unique. Why have a uniform that is the same as everyone else? As a boutique manufacturer, LSJ are able to design custom made uniforms for minimums as low as 50 units and turnaround times\* as quick as 6 weeks.

We have a passion for creating garments that are stylish, functional and of the highest quality. Why not explore what can be possible with The LSJ Collection Custom Make Service?

*Any LSJ stock line fabric  
made up in...  
Any LSJ stock line style*

Minimums from 50+ units  
Turnaround times from 6 weeks\*

*For example...*  
Freedom Plain White made up in  
style 250: Ladies sleeveless shirt

*Any LSJ stock line fabric  
made up in...  
A custom designed style*

Minimums from 100+ units  
Turnaround times from 6 weeks\*

*For example...*  
Micro Fibre Black made up in a pant style  
custom designed to meet your requirements

\* Turnaround times featured are from the point of order confirmation to delivery and will require a deposit before production will commence. Please allow ample time for the decision and sampling process.



*Any Fabric Mill stock  
line fabric made up in...  
Any stock line or custom  
made style*

Minimums from 100+ units  
Turnaround times from 8 weeks\*

*For example...*

Cotton Rich Gold Check made up in style  
2022L: Men's Euro cut shirt



*Create your own fabric  
design made up in...  
Any stock line or custom  
made style*

Minimums from 700+ units  
Turnaround times from 3 months\*

*For example...*

Your corporate colours in a plain, print, check  
or stripe design in the fabric blend you want  
and the style you want

*Your business is unique...  
Why isn't your uniform?*



the  
**LSJ**  
collection

---

[lsjcollection.com.au](http://lsjcollection.com.au)

EDITION N°20

